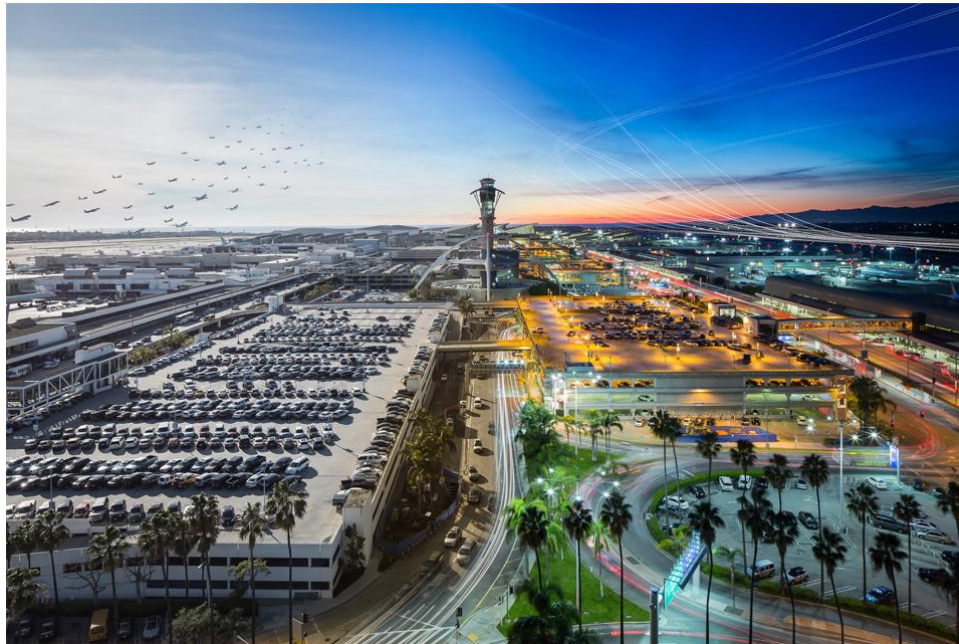
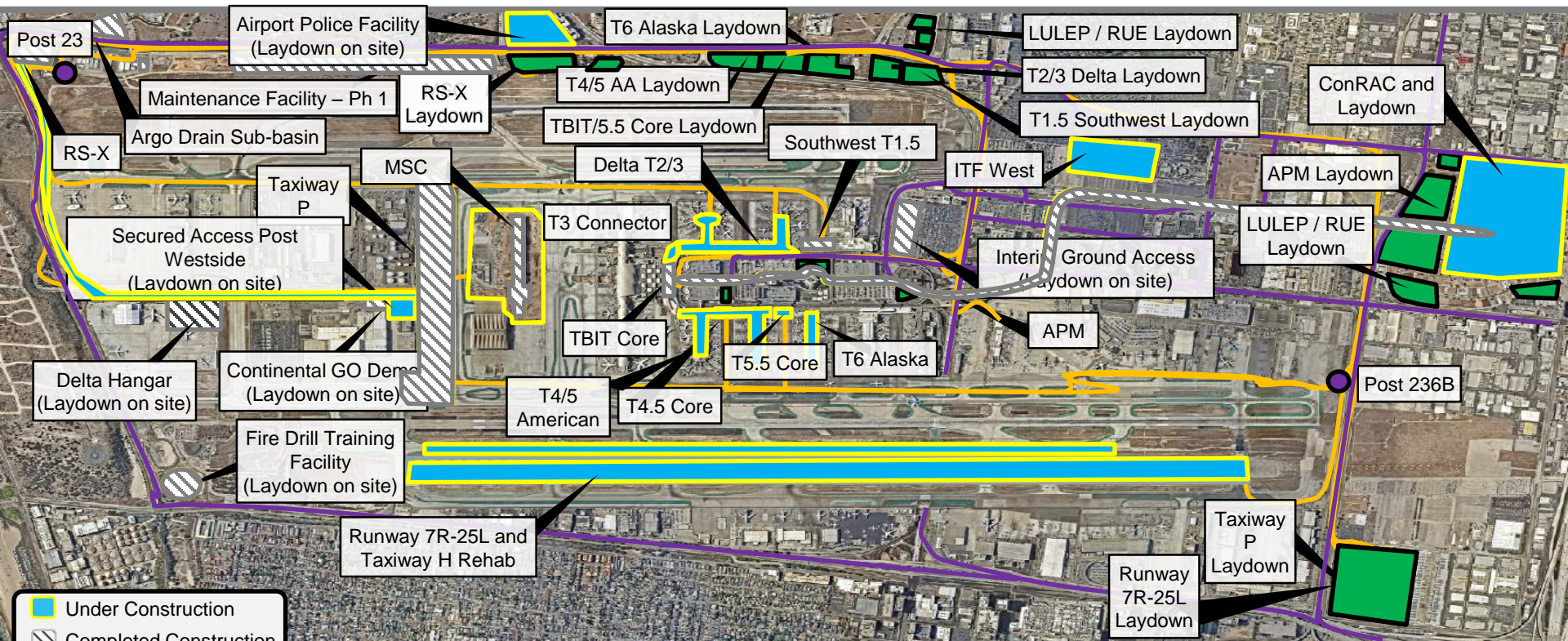
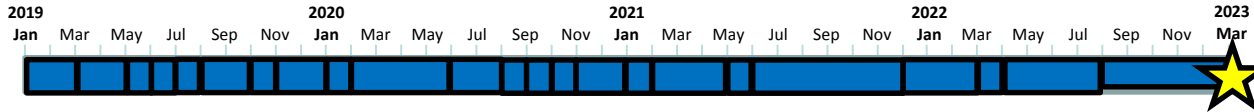


Partners Council Construction Update



May 8, 2019

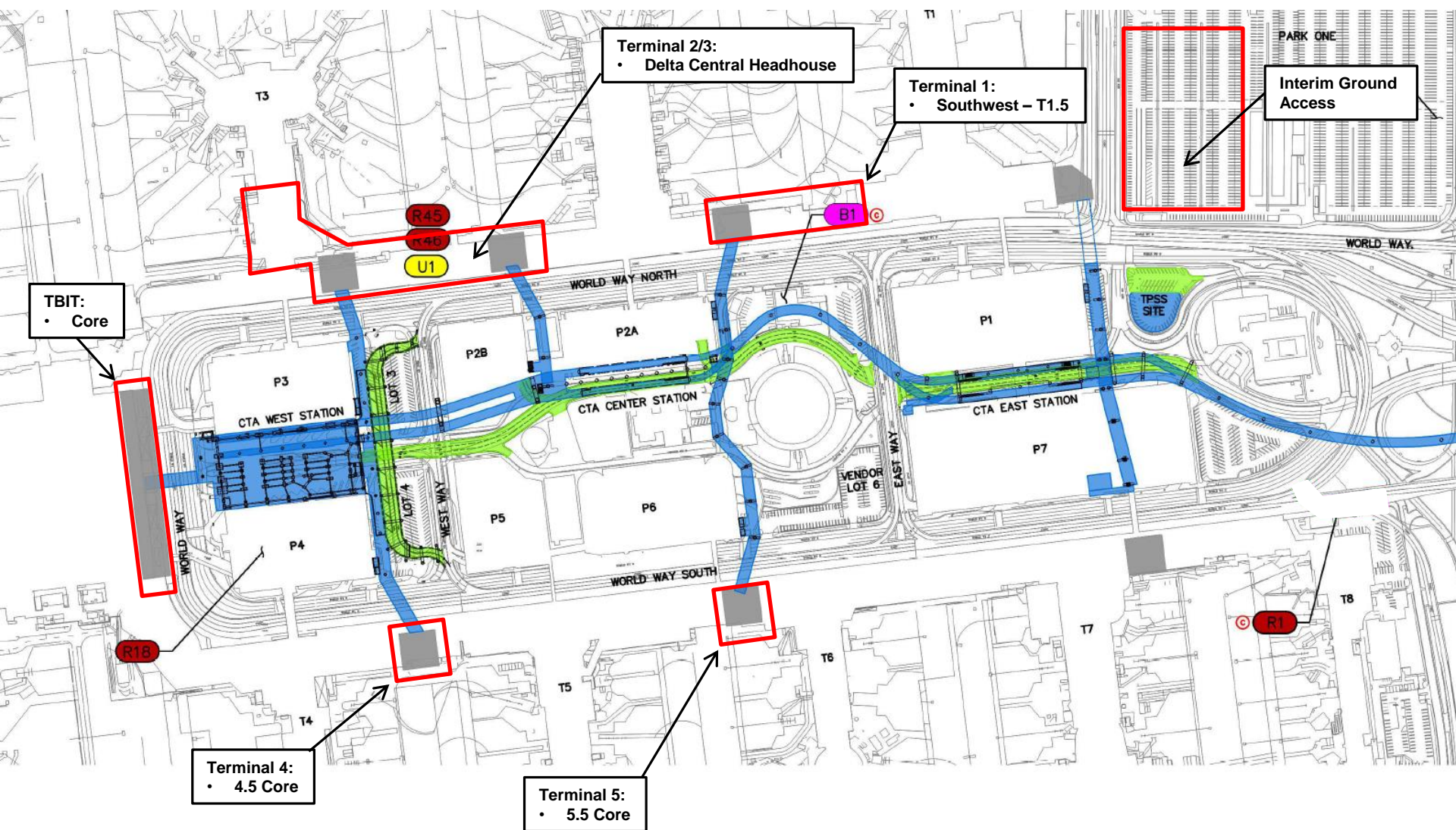
- **LAX Development Program**
- **Terminals Update**
- **Roadway Update**
- **LAMP Update**



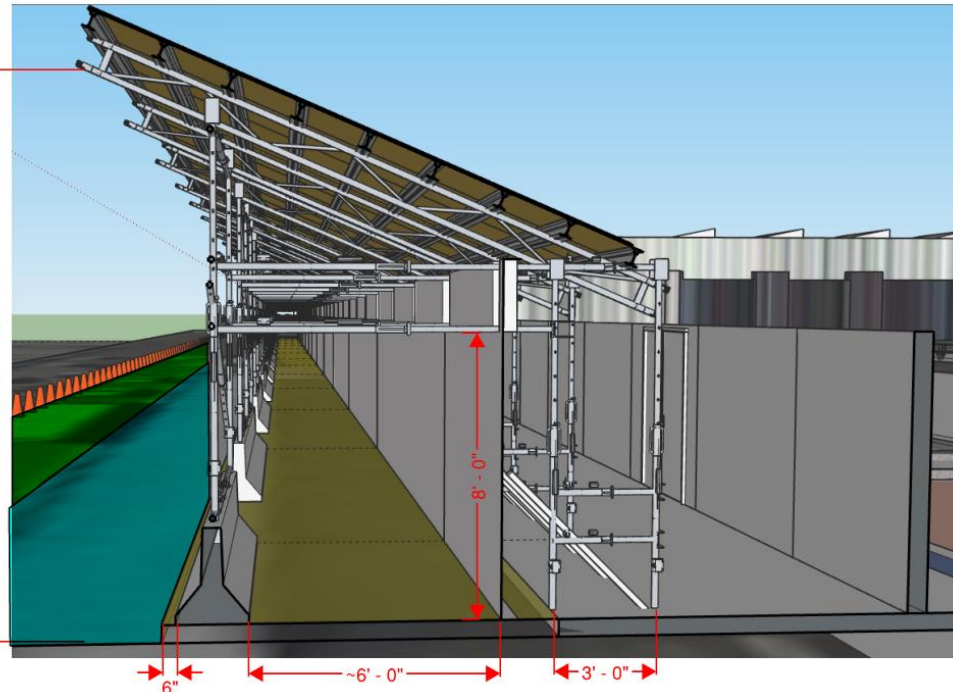
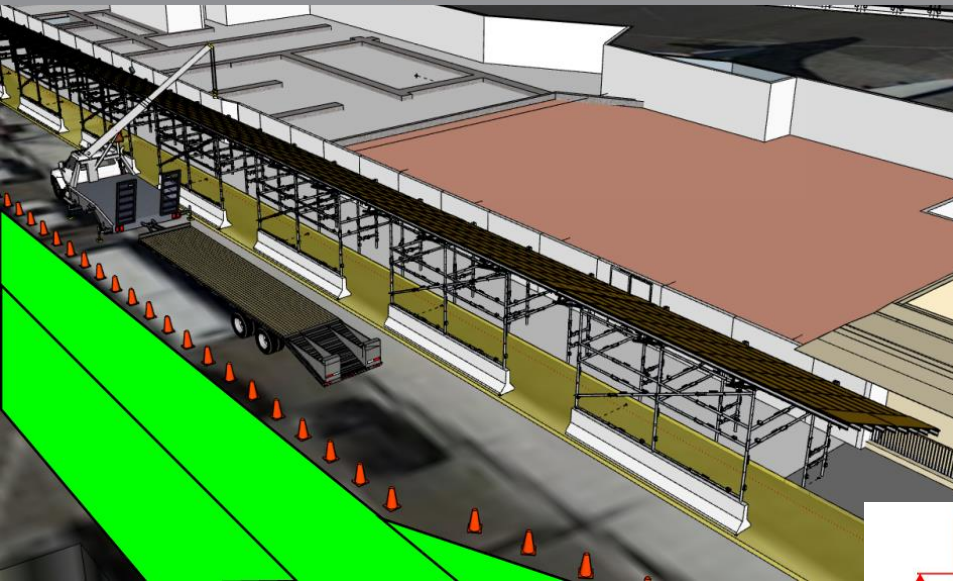
- Under Construction
- Completed Construction
- Laydown Area
- Haul Route
- LAMP Haul Route

2023 Milestones

- ~~APM, ConRAC, Continental GO Demo, TBIT/5.5 Core, T4/5 American, T4.5 Core, T5.5 Core, T6 Alaska, Runway 7R-25L, ITF West, Con Police Facility~~
- ~~APM, ConRAC, Continental GO Demo, Airport Police Facility, Runway 7R-25L, ITF West~~
- Delta Hangar, Interim Ground Access



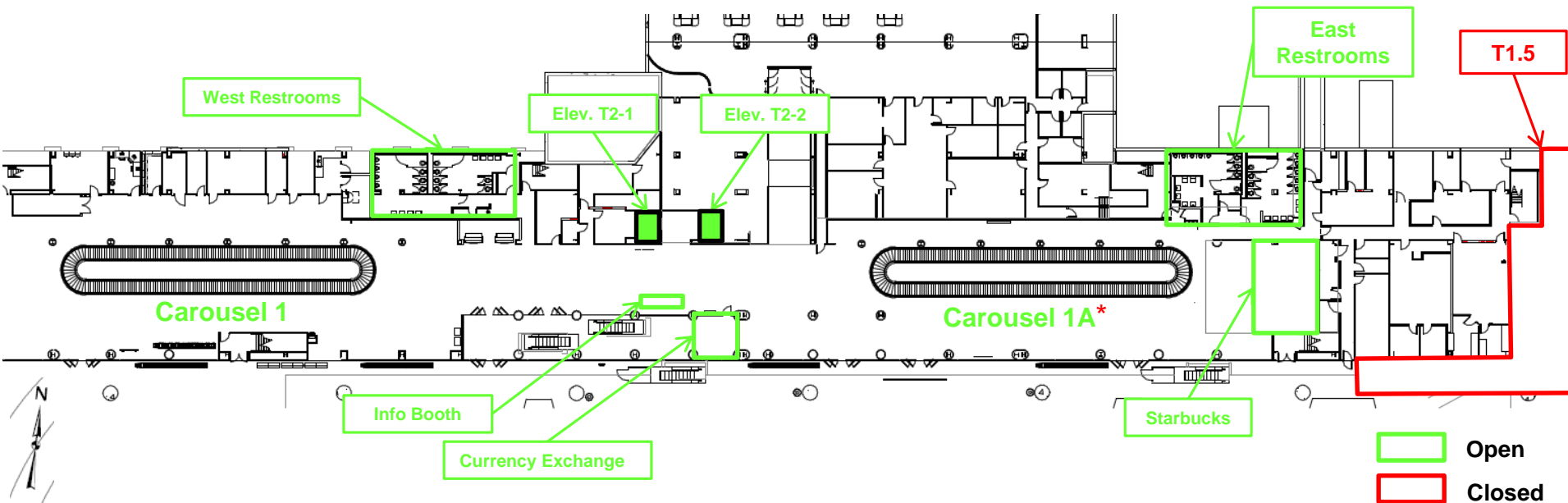
Terminal 1.5 Ticketing Level



- Through Q2 2020

Arrivals Level

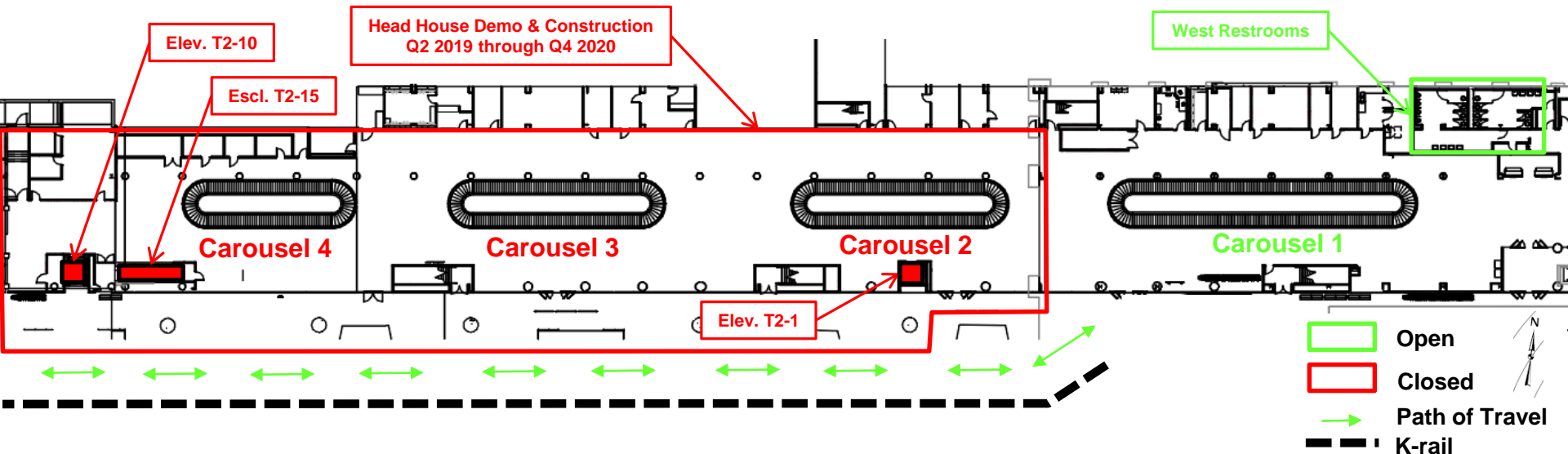
- Restrooms
 - West Restrooms - Open
 - East Restrooms – Open
- Baggage Claims
 - Carousel 1 – Open
 - Carousel 1A* – Just Opened

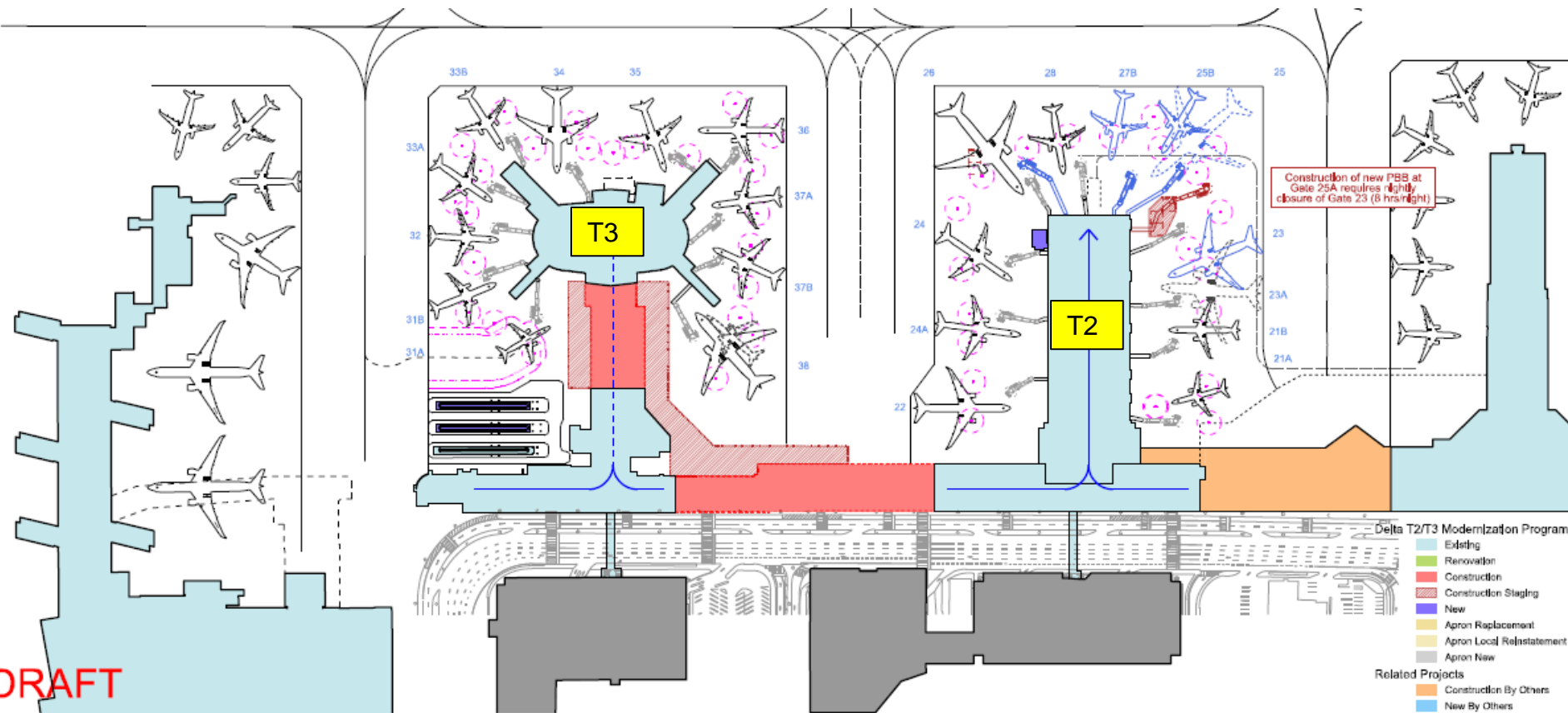




Baggage Claim

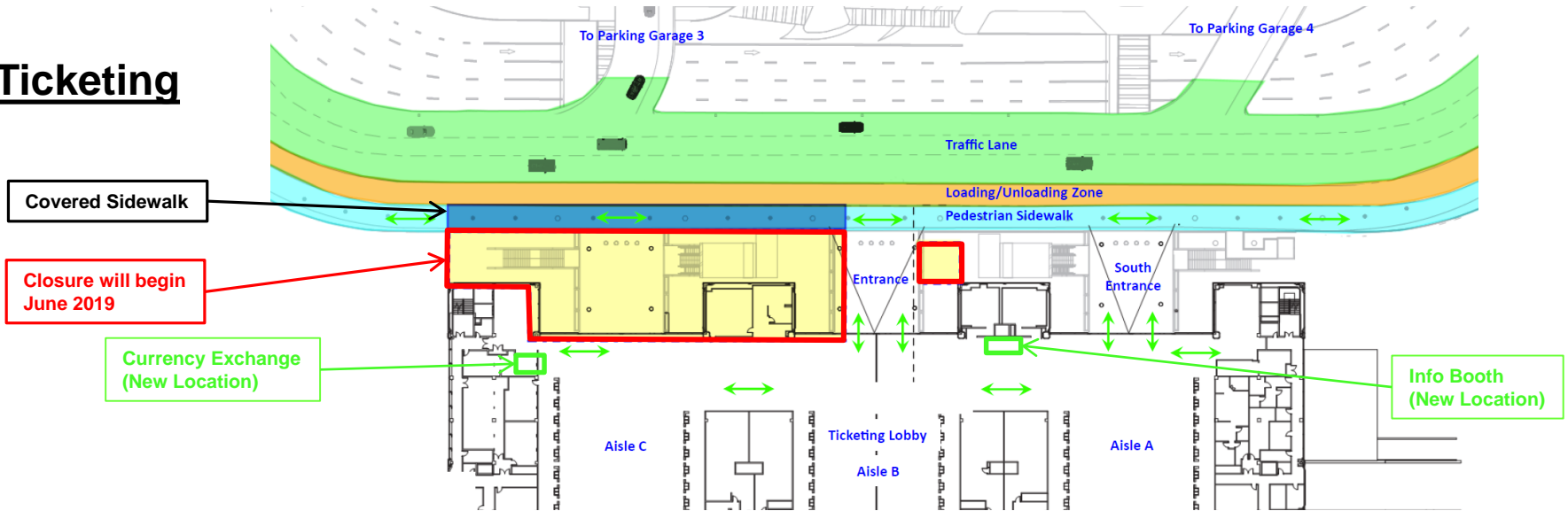
- Carousel 1 – Open
- Carousel 2 – Close
- Carousel 3 – Close
- Carousel 4 – Close



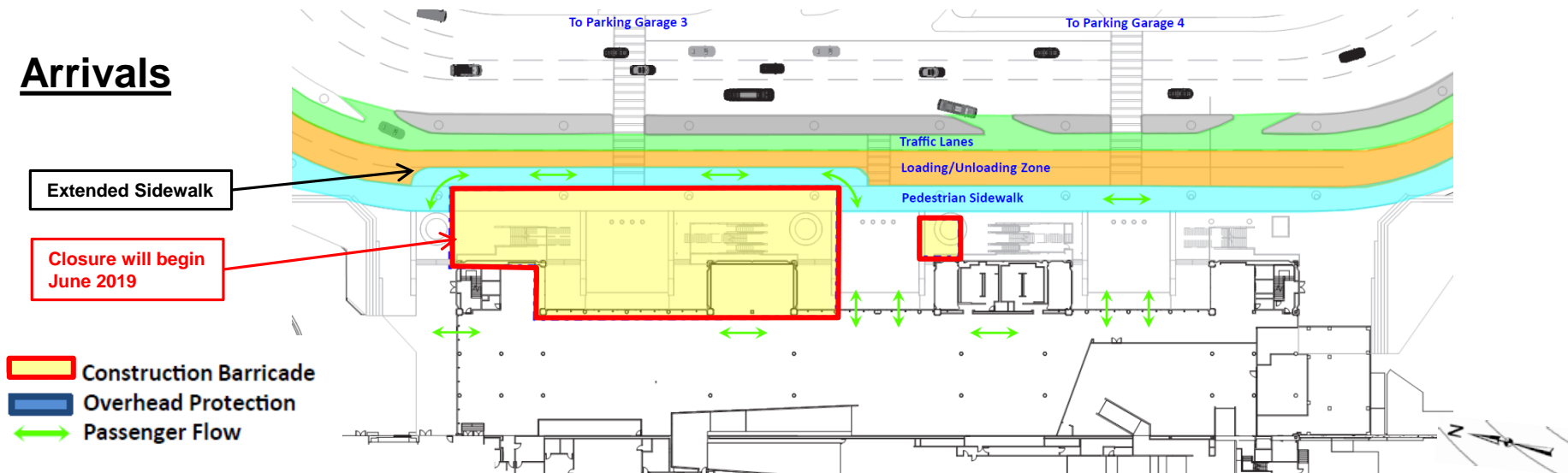


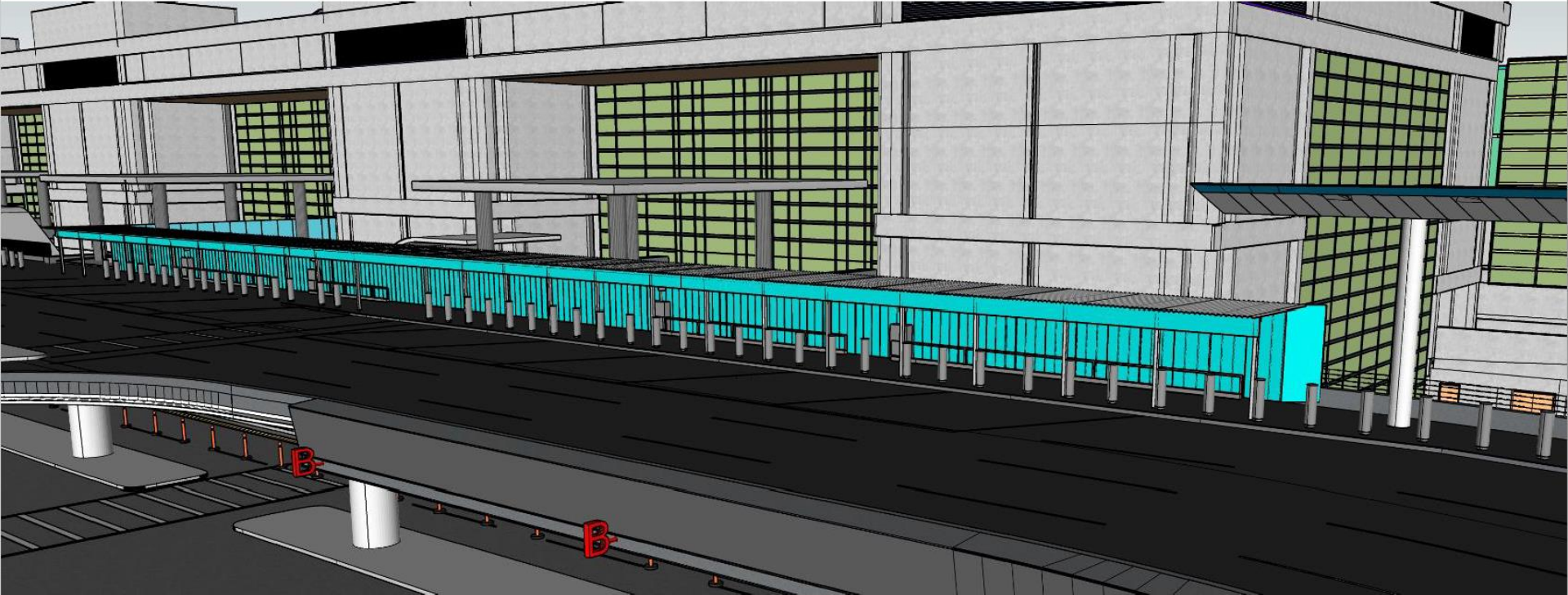
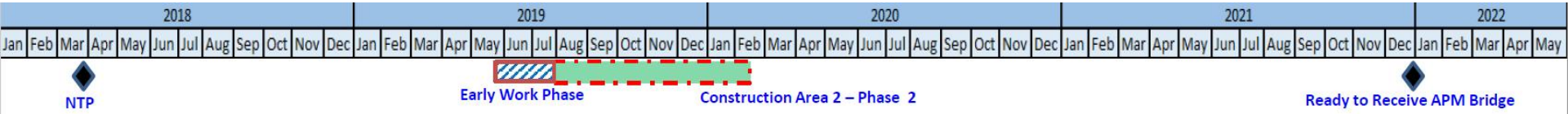


Ticketing



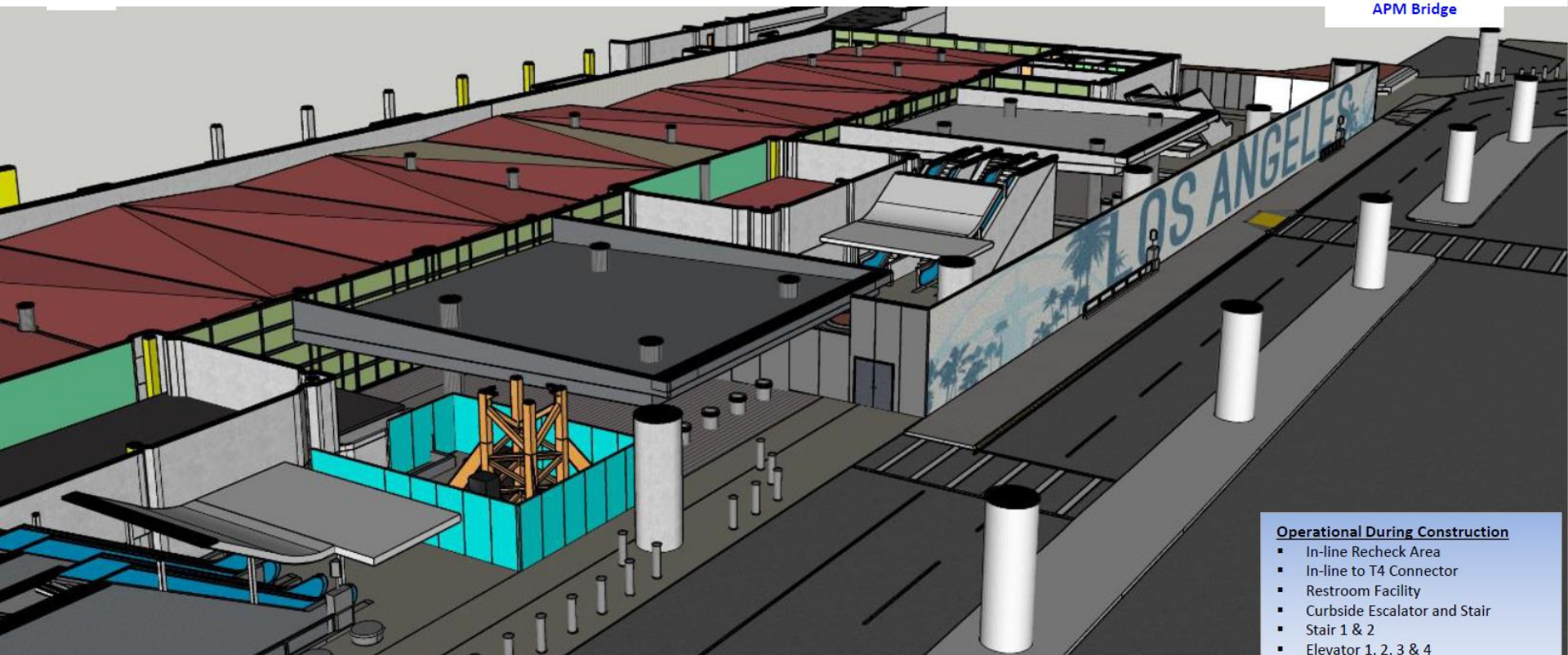
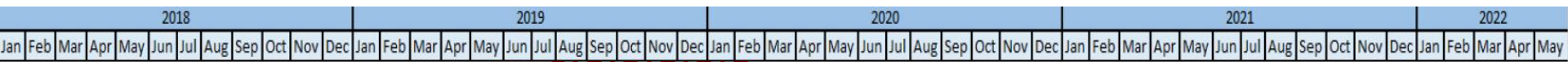
Arrivals





TBIT Core Level 3 – Dayshift Barricade Plan (Looking Southwest)



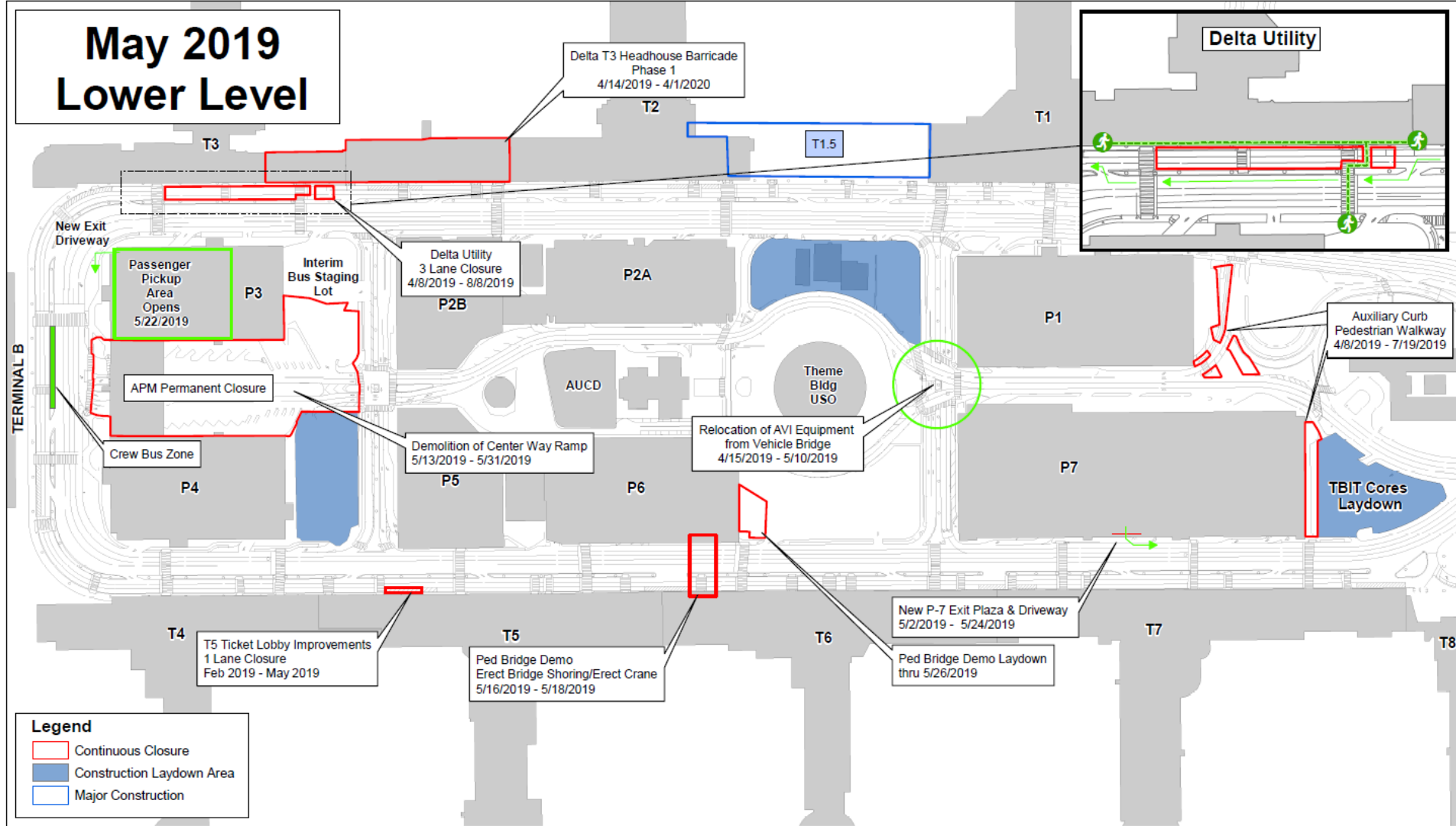


- Operational During Construction**
- In-line Recheck Area
 - In-line to T4 Connector
 - Restroom Facility
 - Curbside Escalator and Stair
 - Stair 1 & 2
 - Elevator 1, 2, 3 & 4

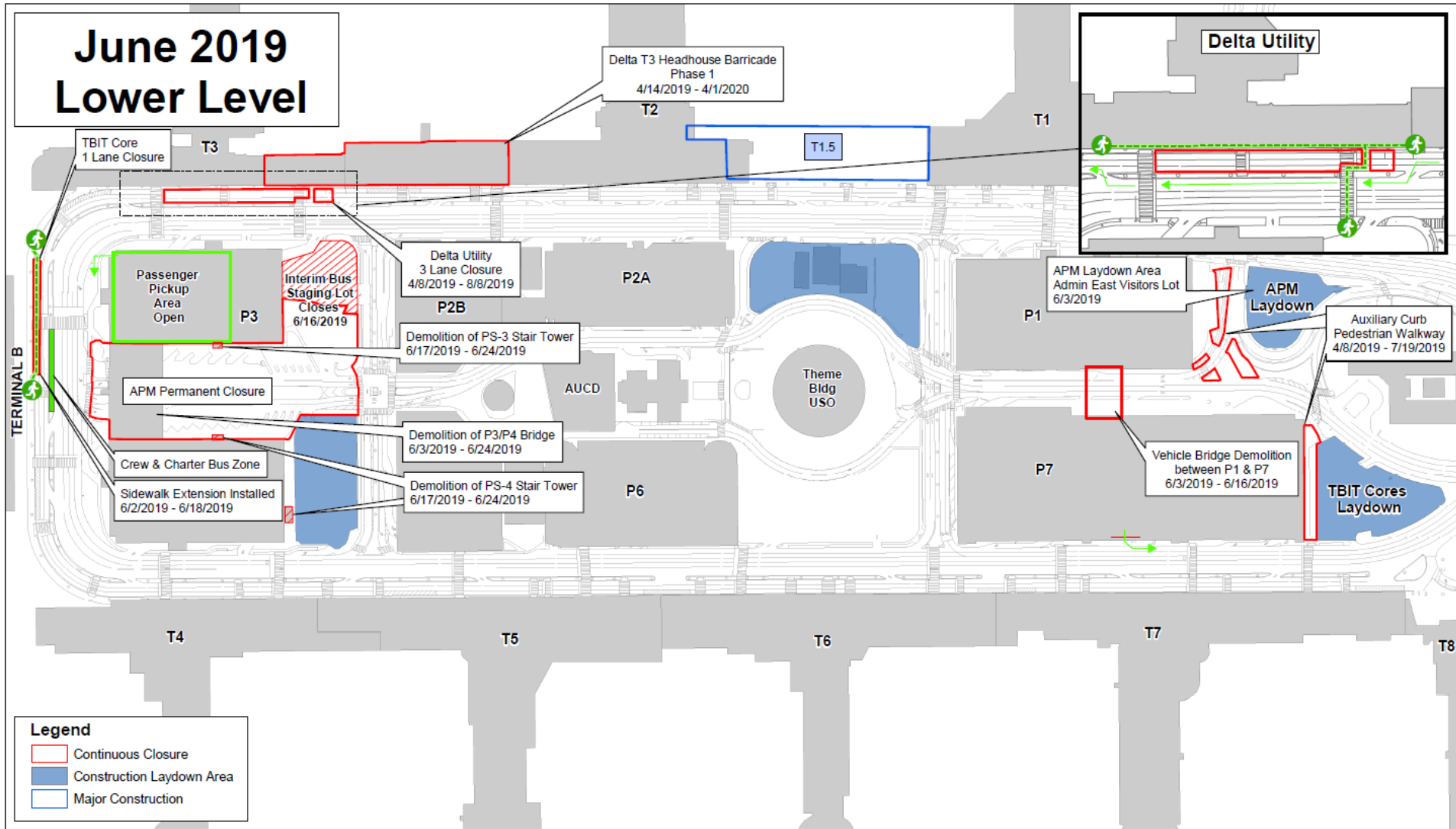
TBIT Core Level 1 – Barricade Plan (Looking Northeast)



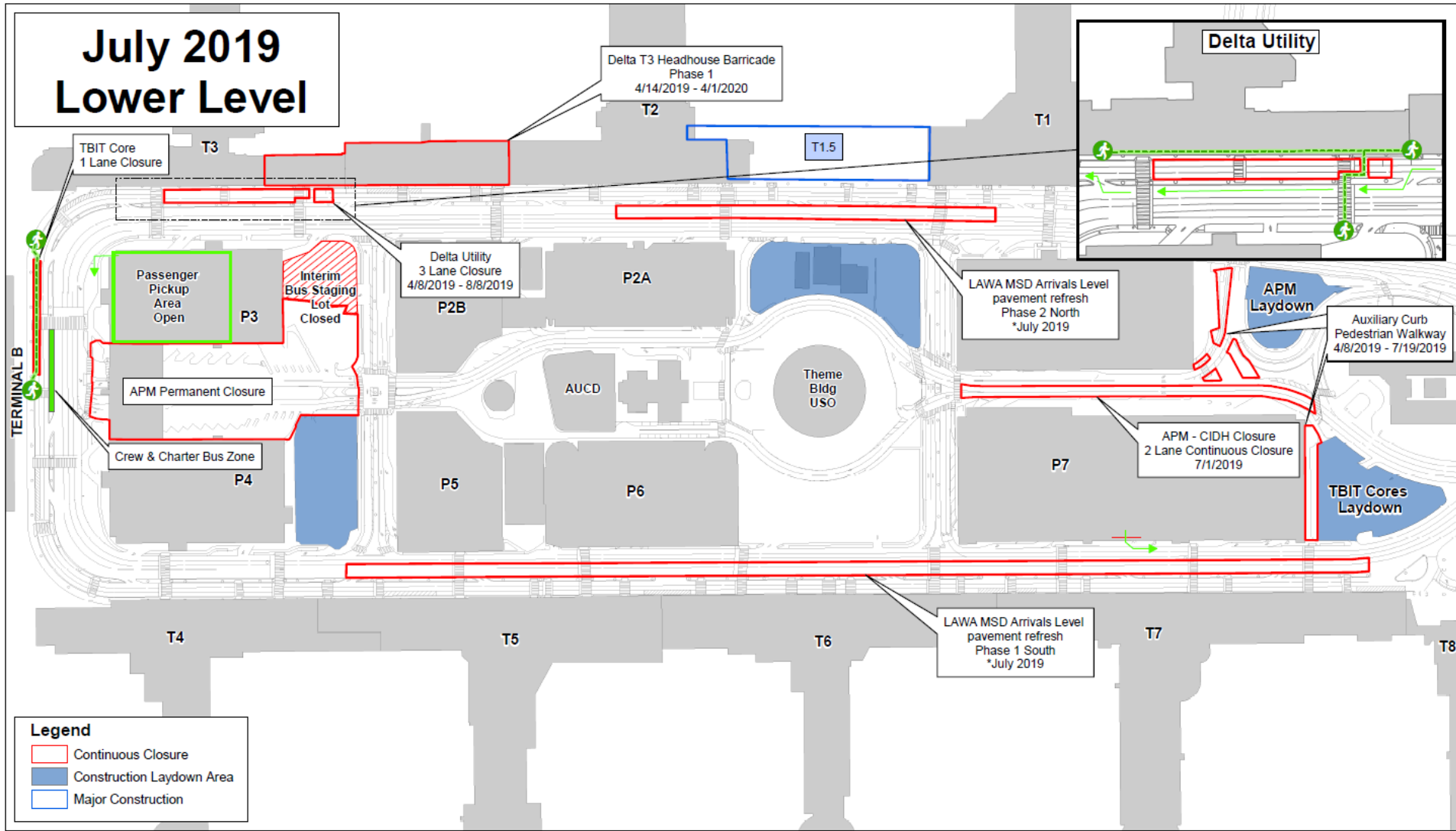
May 2019 Lower Level



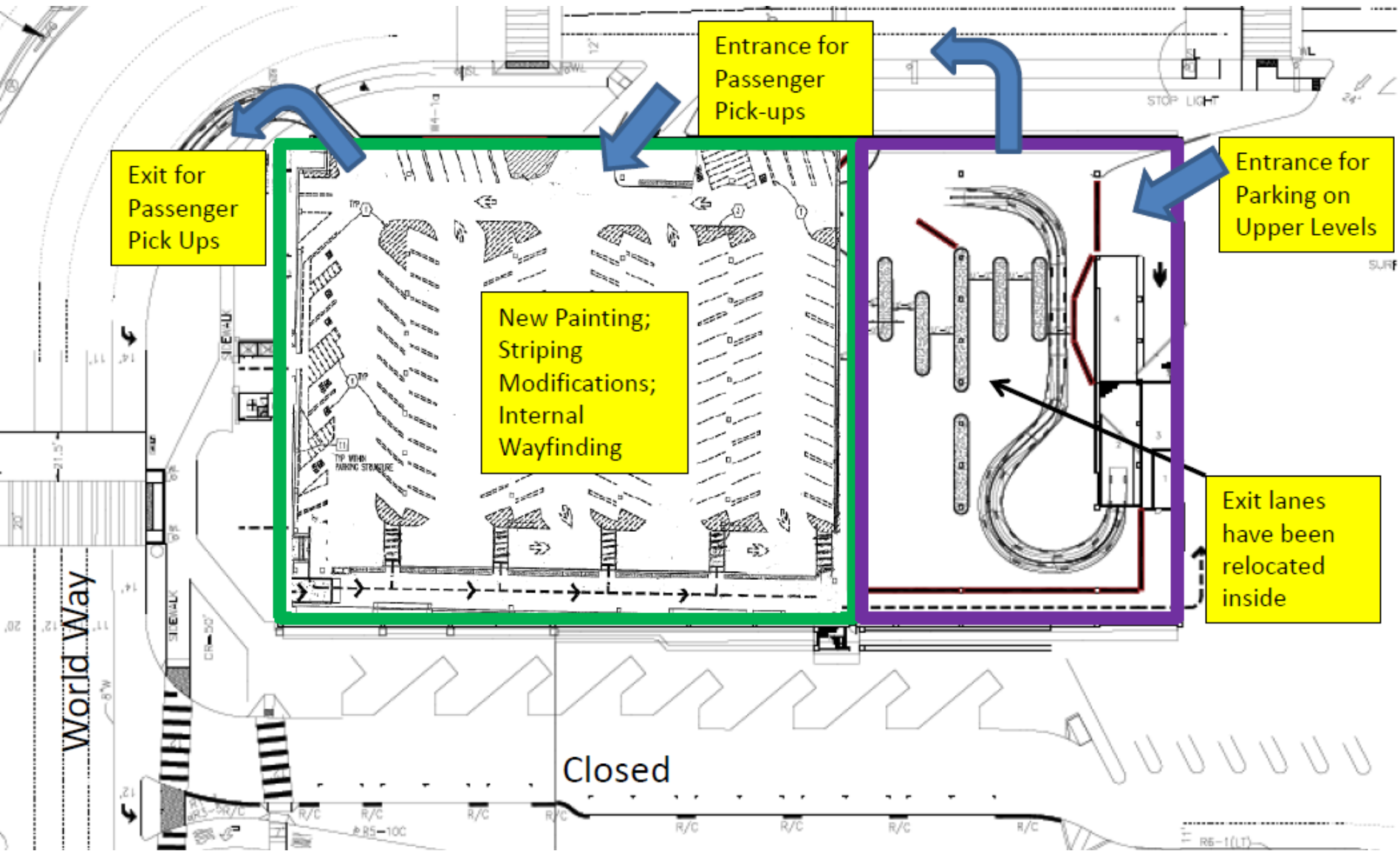
June 2019 Lower Level

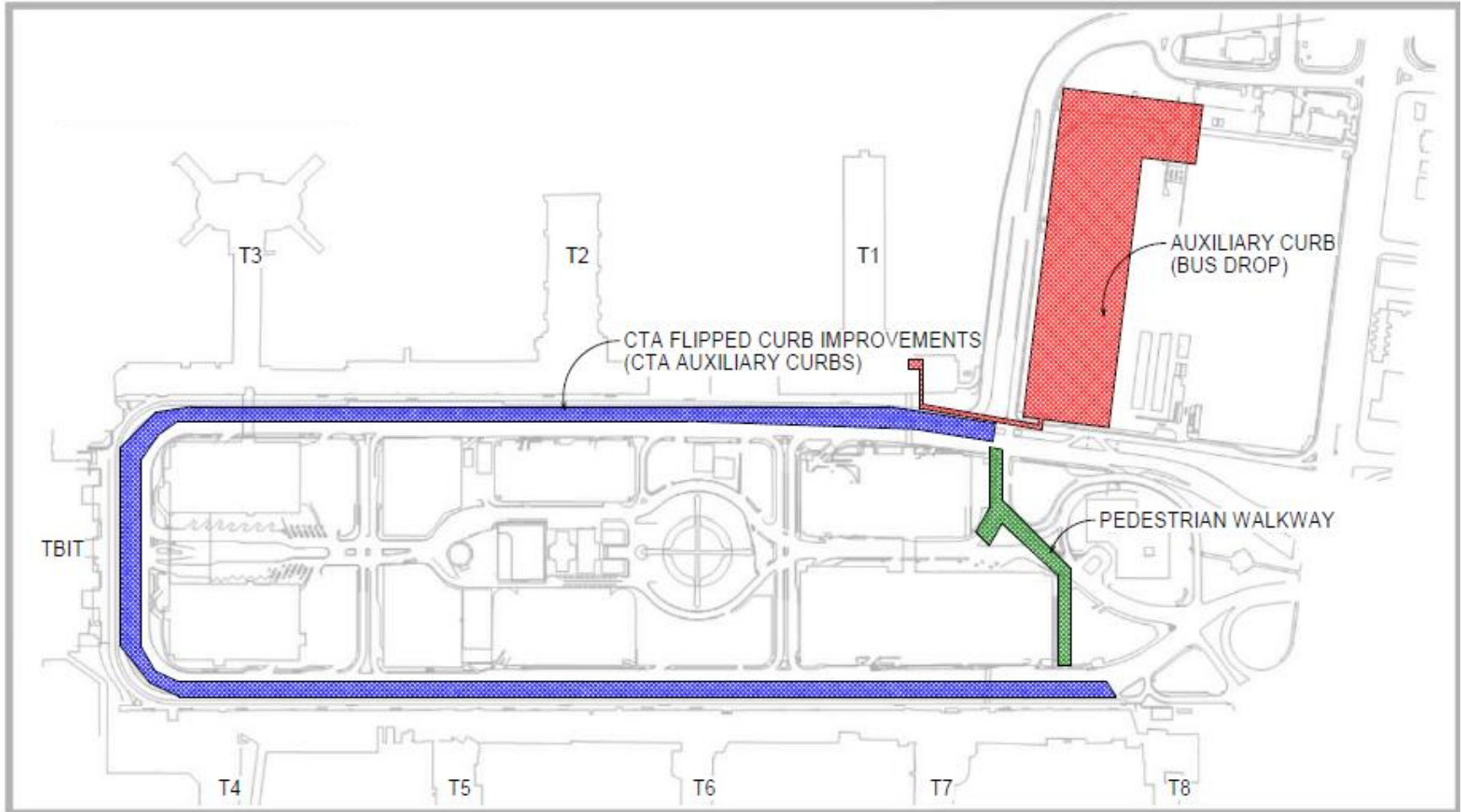


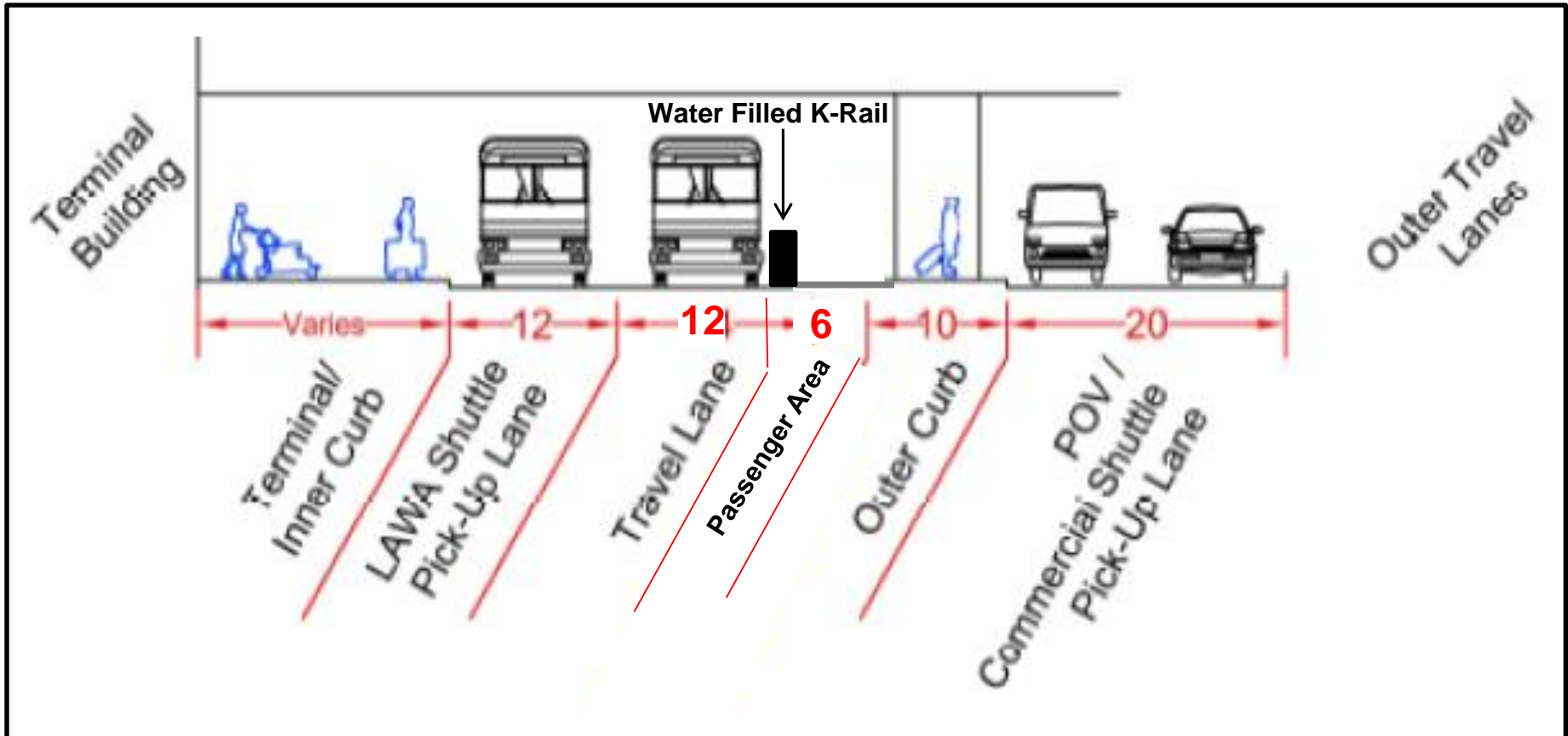
July 2019 Lower Level



Parking Structure 3 Pick-Up Area



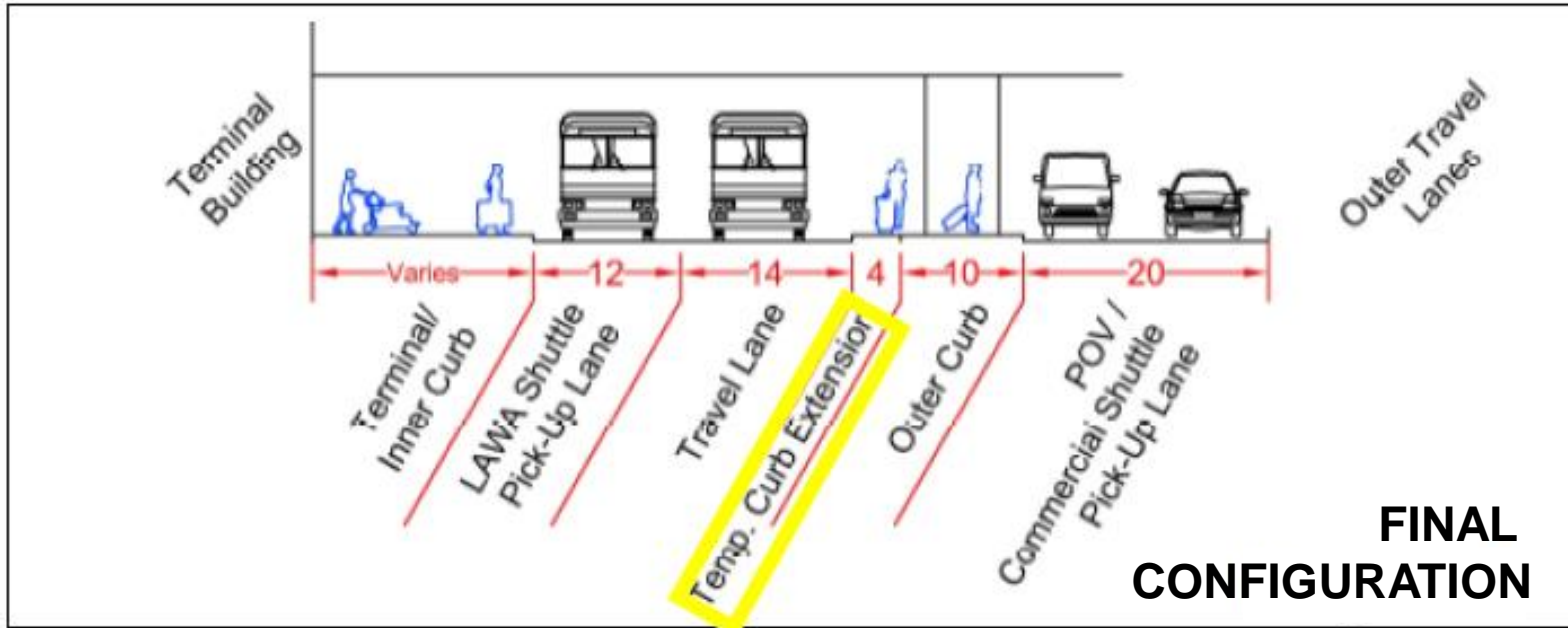


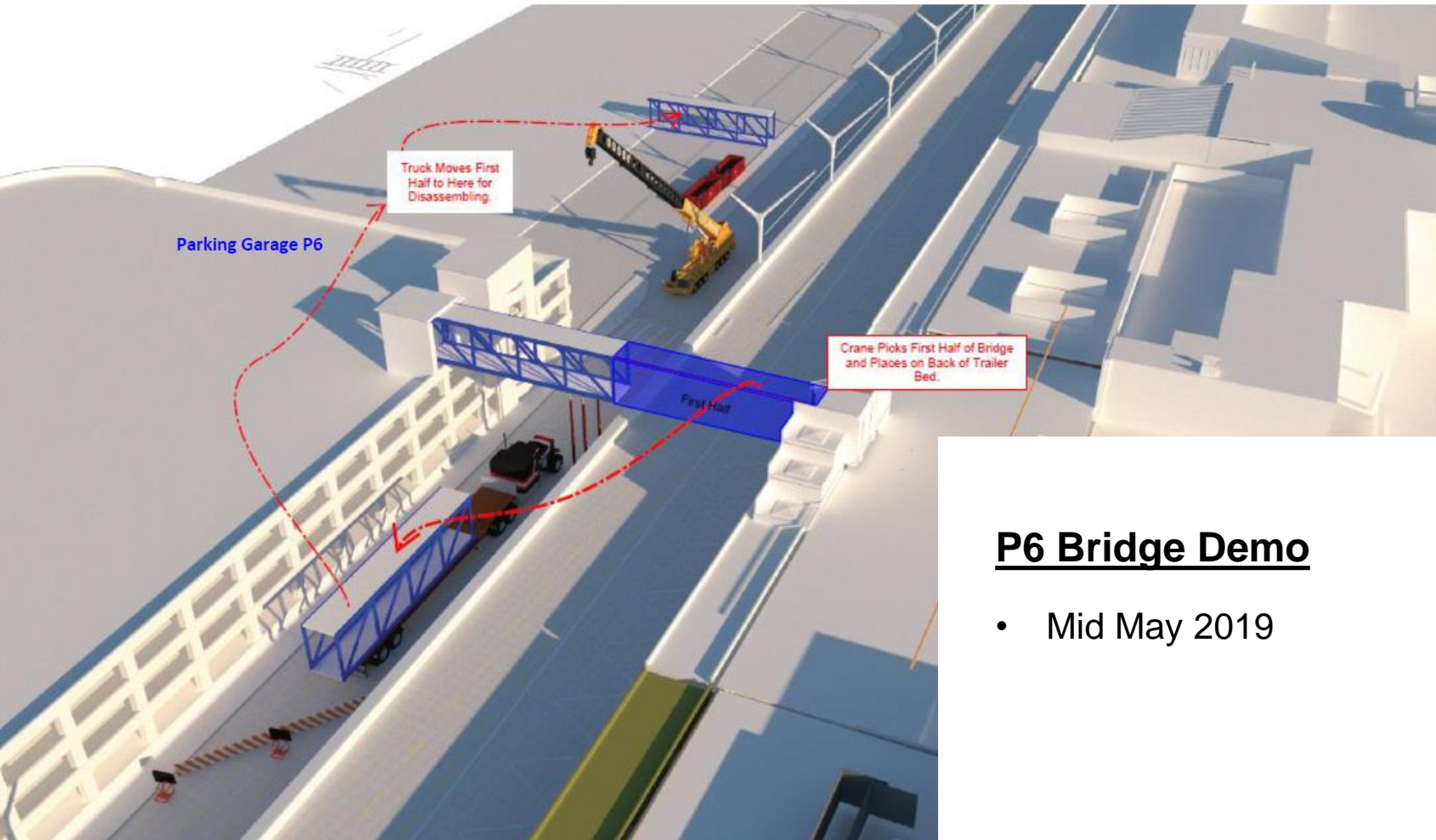


- New passenger pick up area established (wider curb)
- Curb flipped

- At this time, iCare Team will be in place to direct guests
- Work activities to occur at night

Interim Ground Access Final Configuration

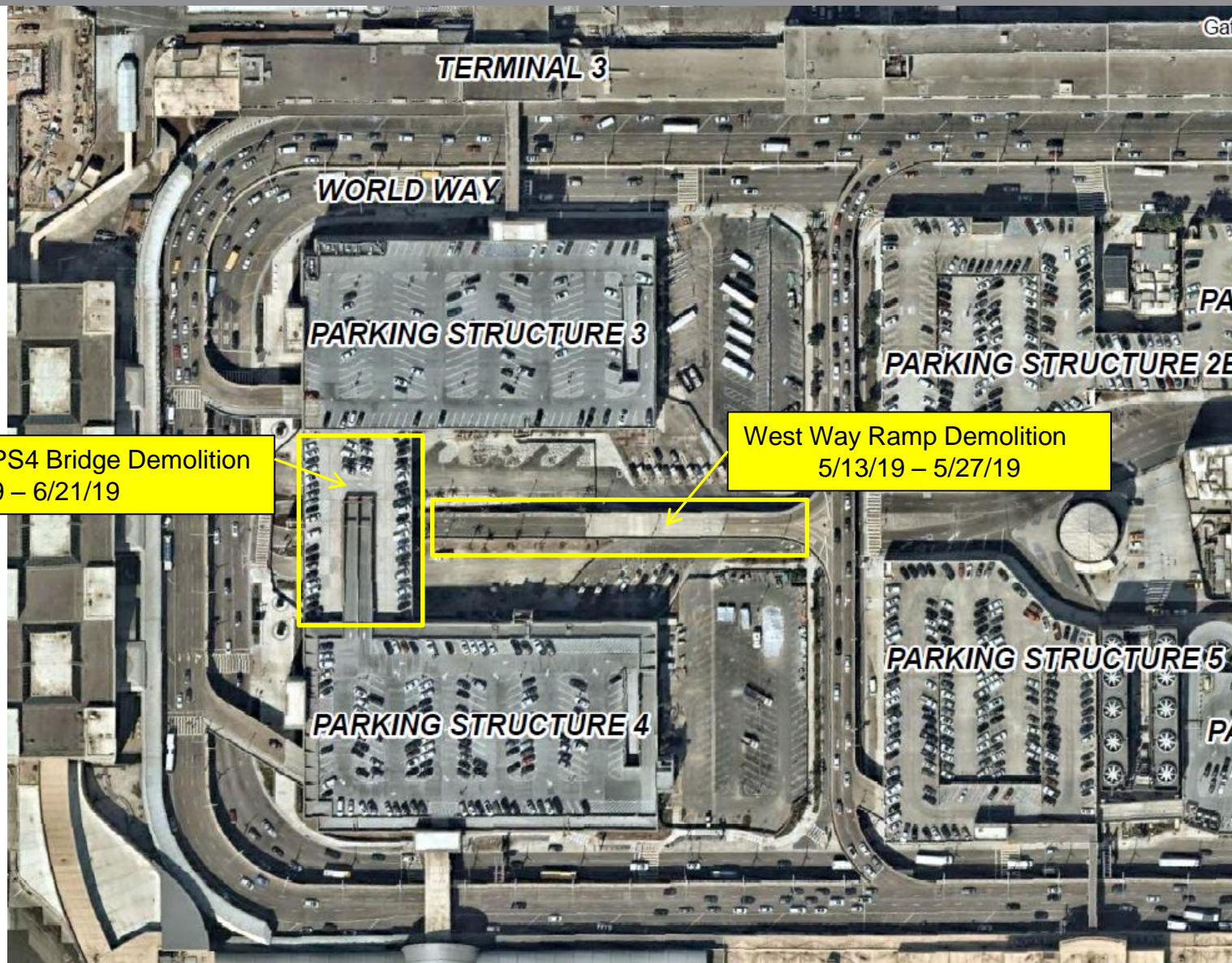




P6 Bridge Demo

- Mid May 2019

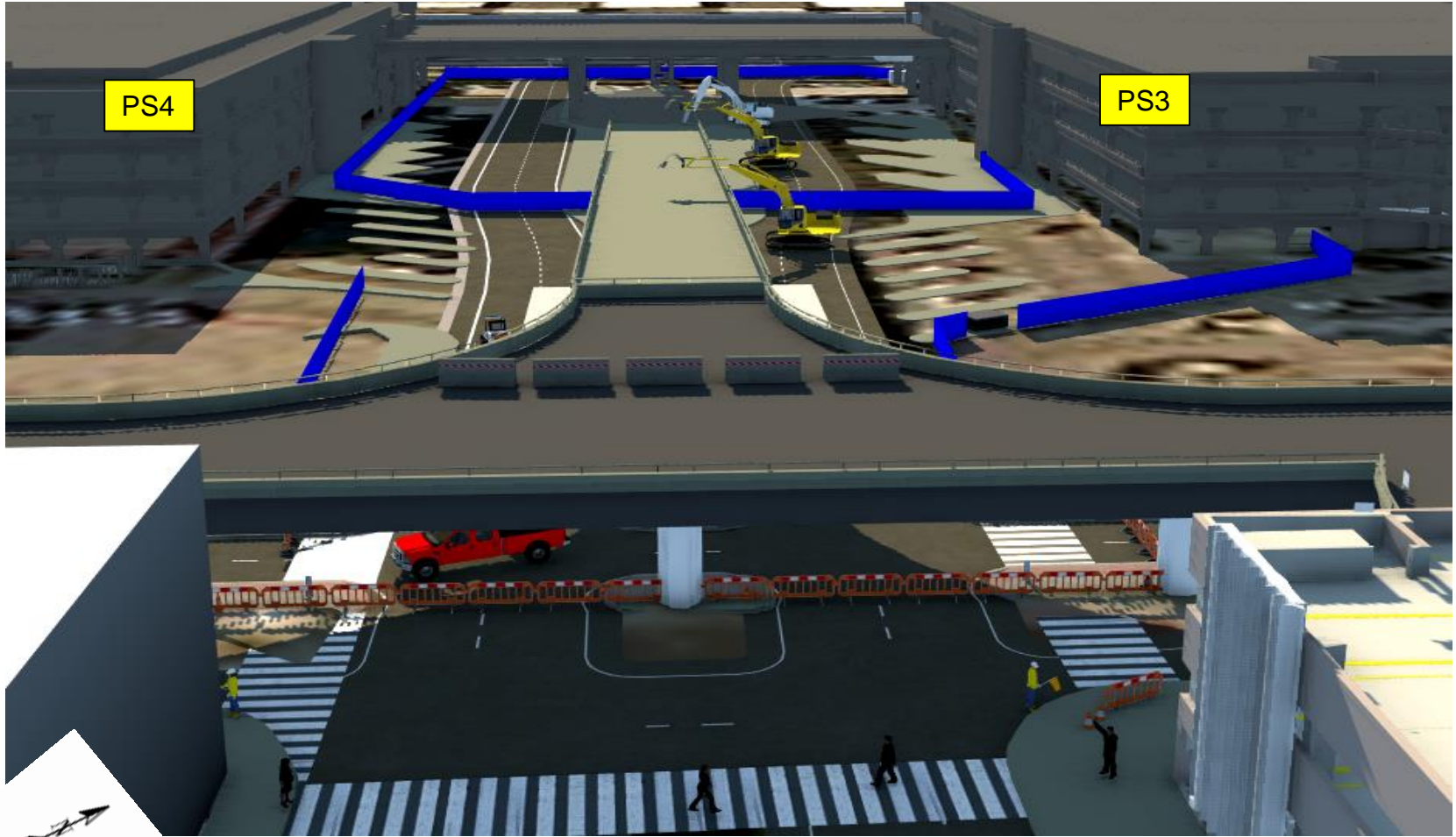
Landside Access Modernization Program

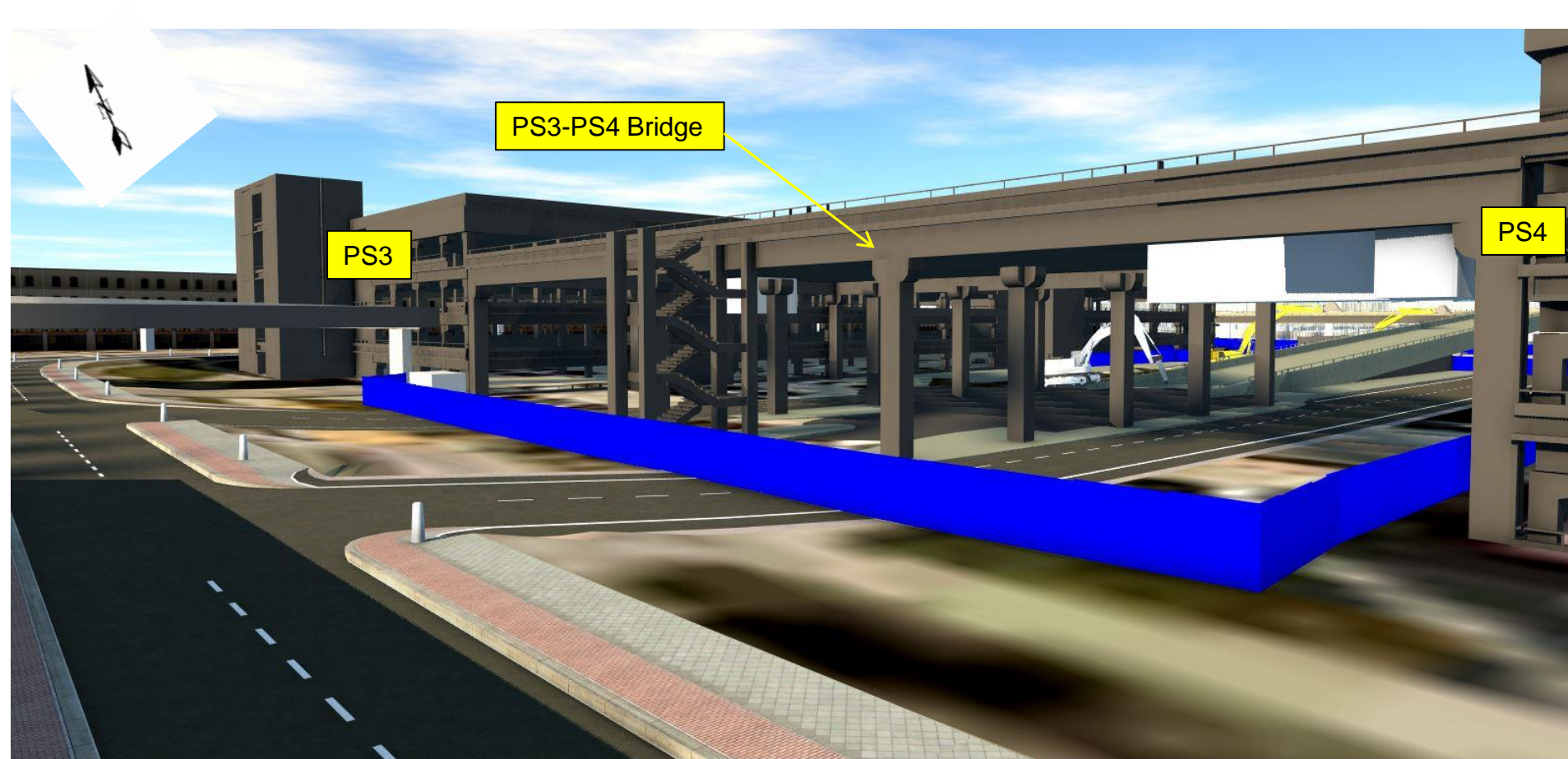


PS3-PS4 Bridge Demolition
6/3/19 – 6/21/19

West Way Ramp Demolition
5/13/19 – 5/27/19

West Way Ramp Demolition (West Facing View)









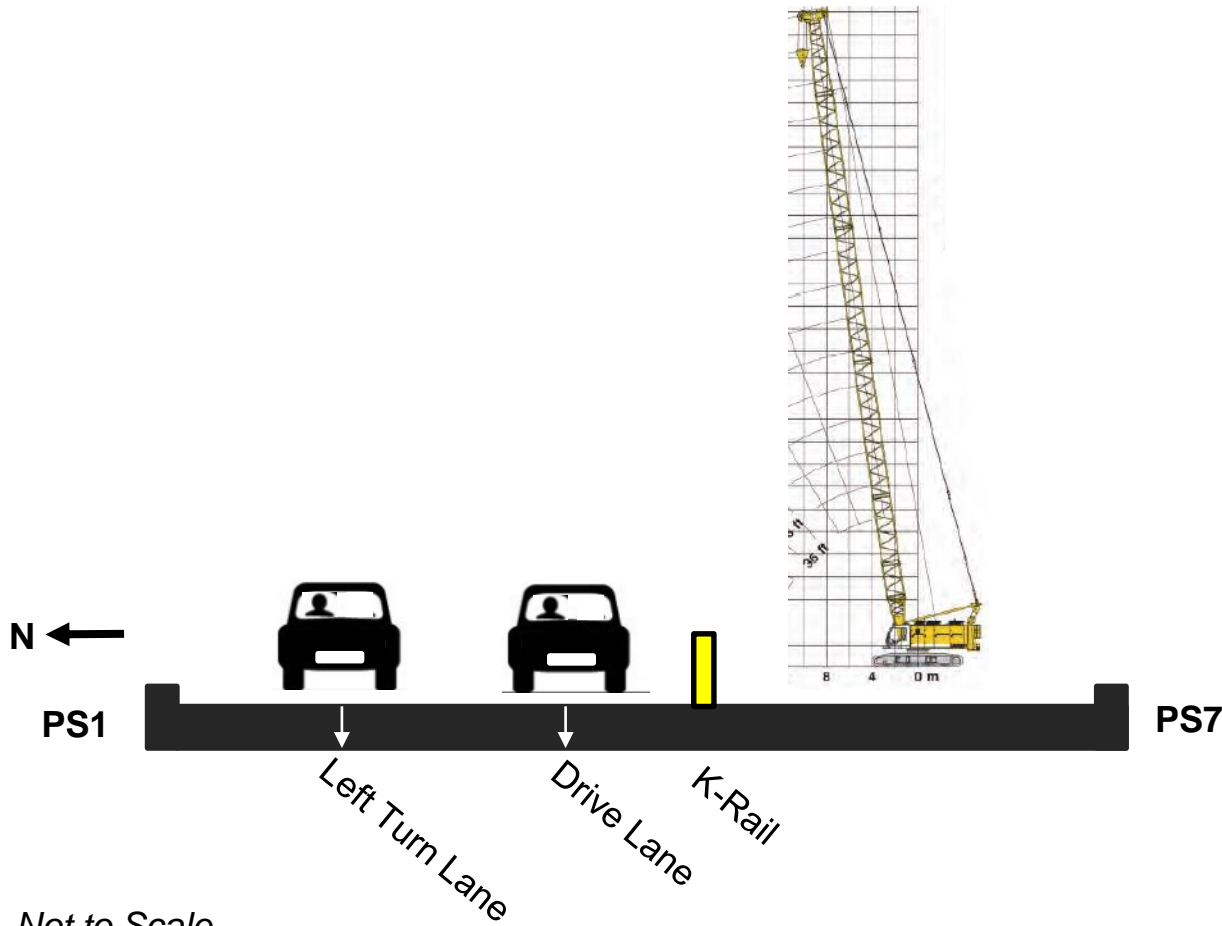
Phase 1

- Scheduled to start July 2019
- Duration: 7-10 days per pile location
- Equipment and Materials behind K-rail:
 - Drill Rig
 - Oscillator
 - Dig Crane
 - Baker Tanks – Store water
 - Dump Trucks – dirt off-haul
 - Spoils pile
 - Water Buffalo

● Proposed Production CIDH

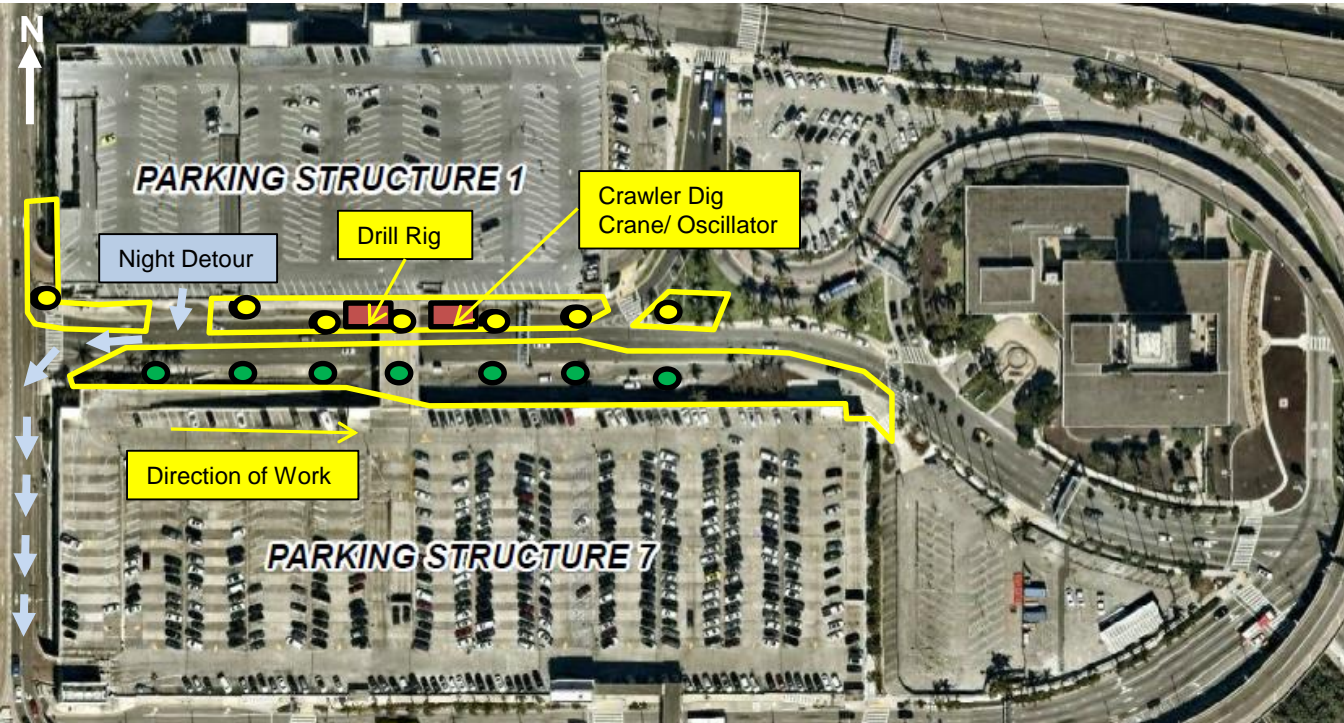
Disclaimer: This content is preliminary, conceptual designs used for illustrative purposes only

CIDH Production Pile Plan Phase 1 - East Station – Center Way Traffic Plans



Not to Scale

Future – Phase 1
Day Shift - 2 Lanes open
Night Shift – All lanes closed



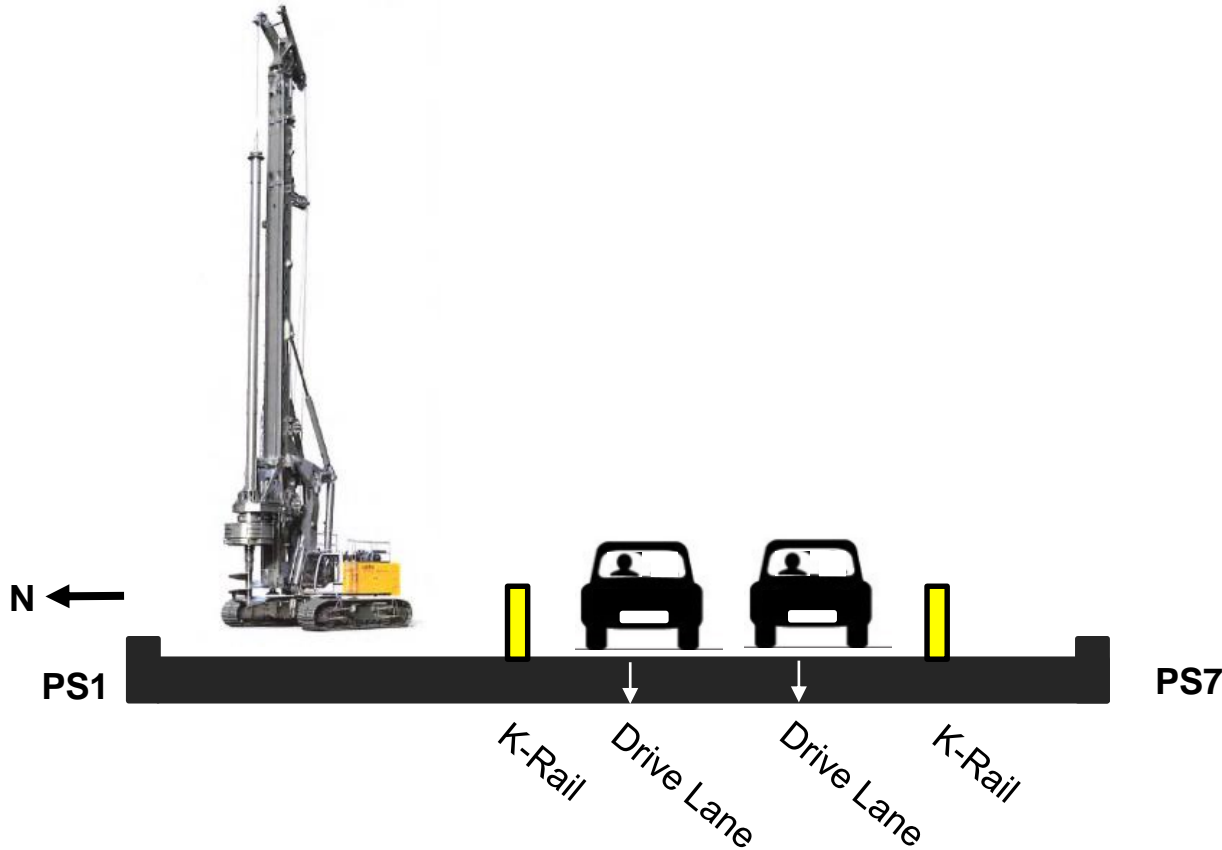
- Proposed Production CIDH
- Complete

Disclaimer: This content is preliminary, conceptual designs used for illustrative purposes only

Phase 2

- Schedule TBD
- Duration: 7-10 days per pile location
- Equipment and Materials behind K-rail:
 - Drill Rig
 - Oscillator
 - Dig Crane
 - Baker Tanks – Store water
 - Dump Trucks – dirt off-haul
 - Spoils pile
 - Water Buffalo

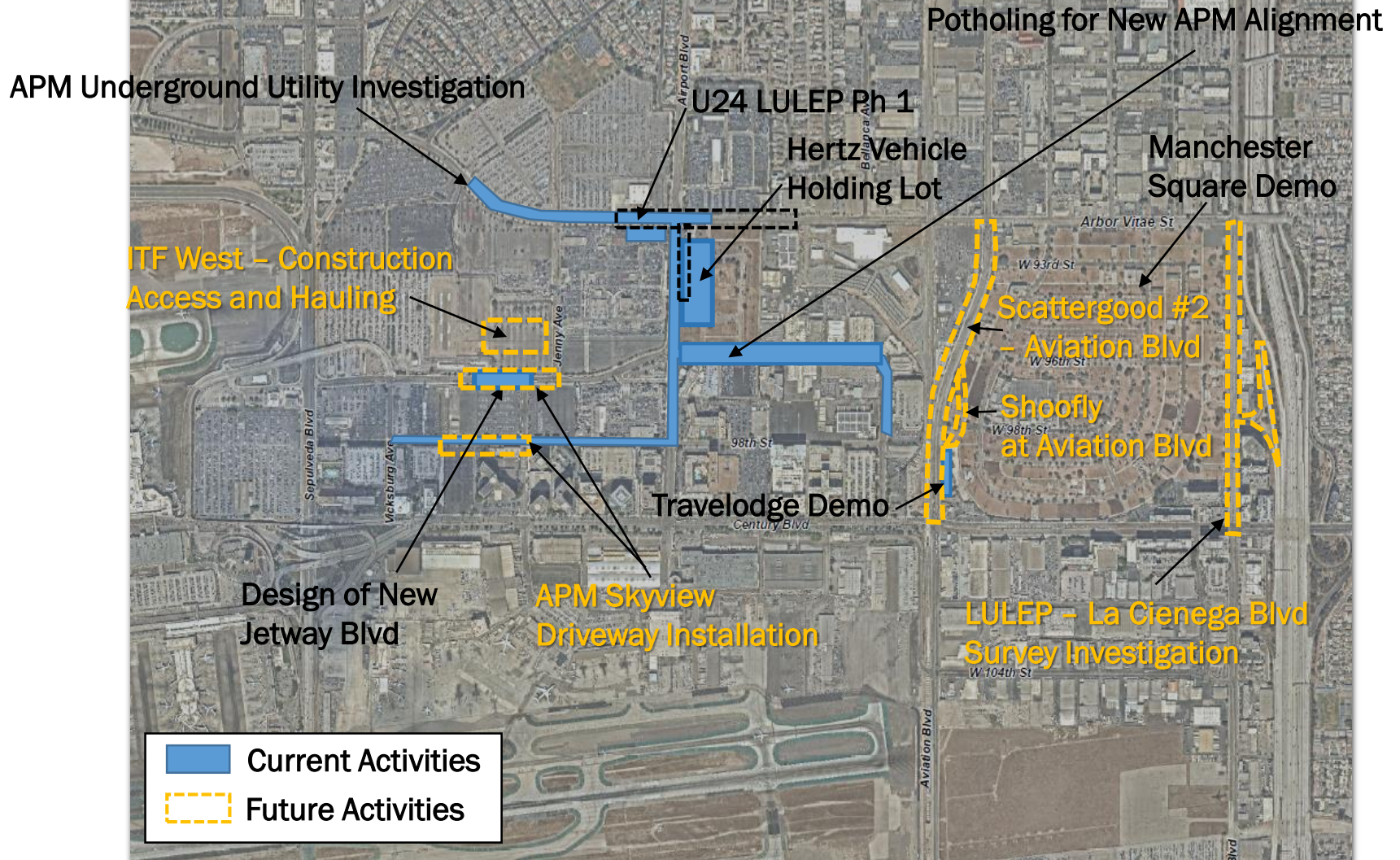
CIDH Production Pile Plan Phase 2 - East Station – Center Way Traffic Plans



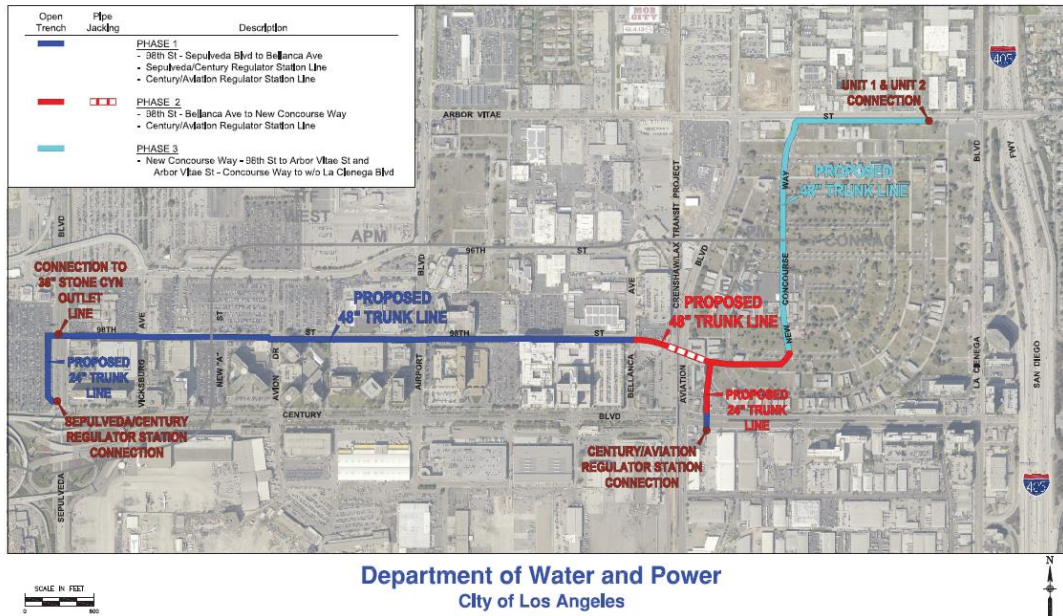
Not to Scale

Future – Phase 2
Day Shift - 2 Lanes open
Night Shift – All lanes closed





CENTURY TRUNK LINE - UNIT 1



- **Activity**
 - New 48” Water Trunk Line
- **Traffic Impacts**
 - TBD
- **Dates/Times**
 - November 2019 – September 2020
 - Times TBD
 - Ph 1 (LADWP) Fall 2019 – Fall 2020



Questions