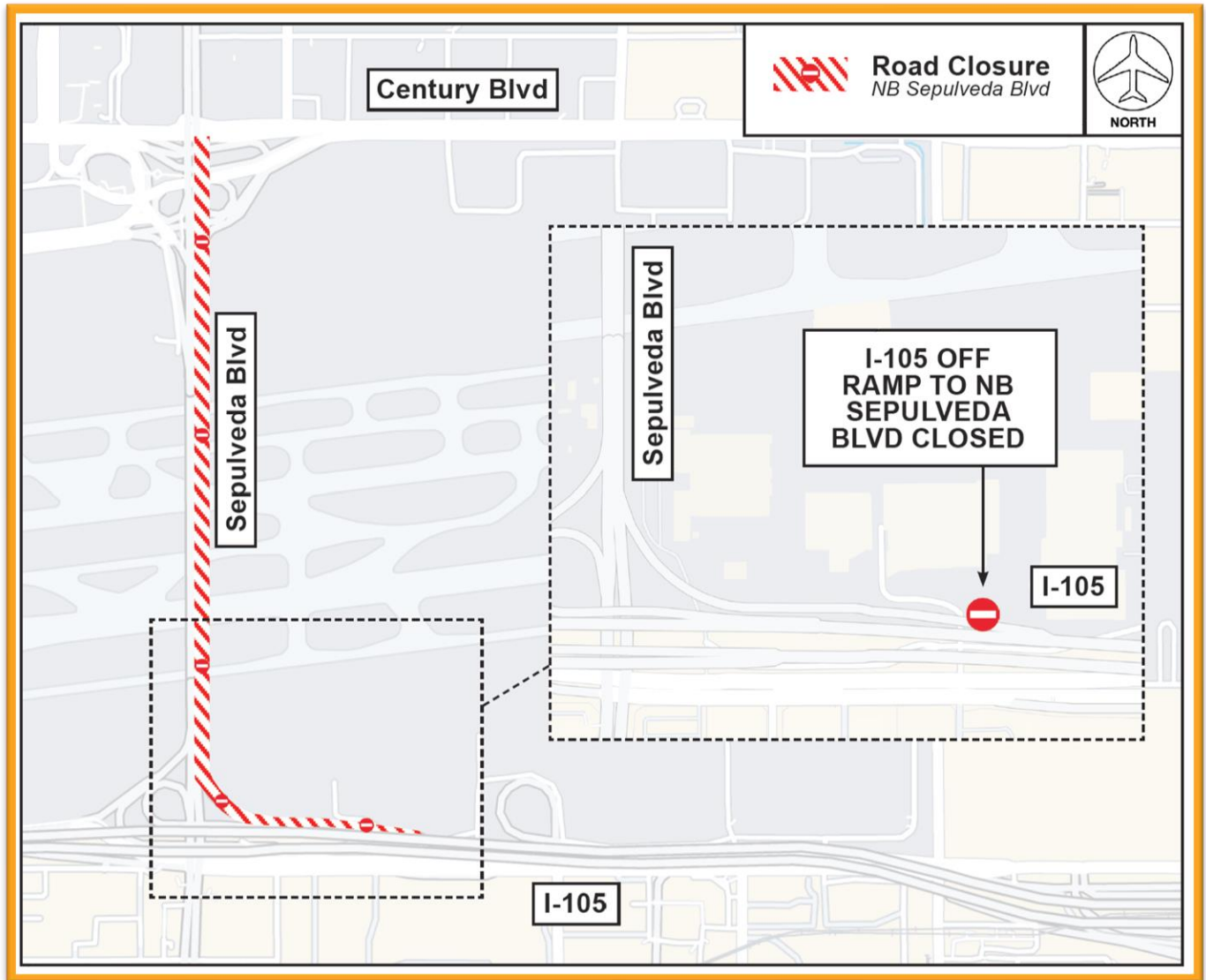


# Construction Hot Topics

Week of April 10, 2023

## 1. Northbound Sepulveda Boulevard Impacts

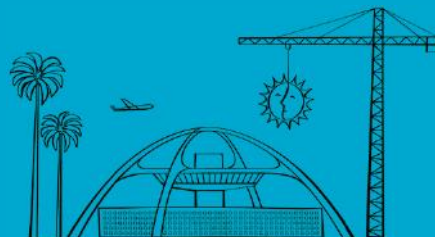
- To facilitate wayfinding installation for the Landside Access Modernization Program, northbound Sepulveda Boulevard between Imperial Highway and Century Boulevard, including the westbound I-105 Freeway offramp at Sepulveda Boulevard, is scheduled to be closed Sunday, April 16 from 12AM to 4AM (four hours)
- Southbound Sepulveda Boulevard is not impacted by this work
- Vehicles will be detoured via westbound Imperial Highway to northbound Pershing Drive to eastbound Westchester Parkway



*Northbound Sepulveda Blvd between Imperial Hwy and Century Blvd is scheduled to be closed for four hours overnight on Sunday, April 16 for signage installation*

Change is in the Air(port).

**LAX** WAY BETTER. REALLY.

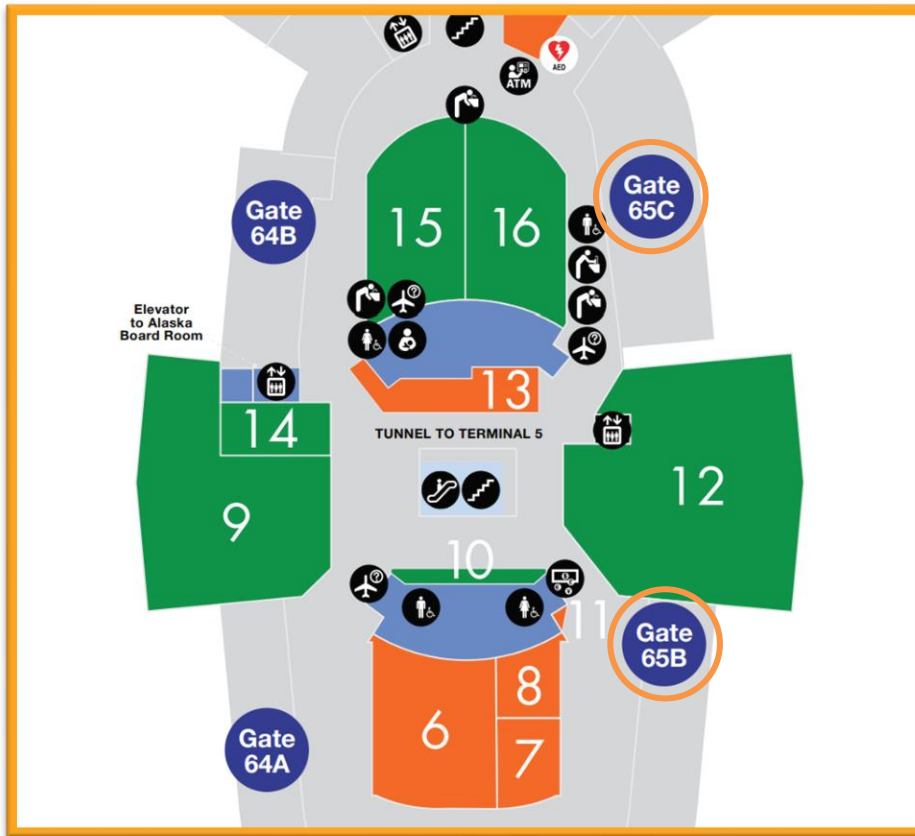


# Construction Hot Topics

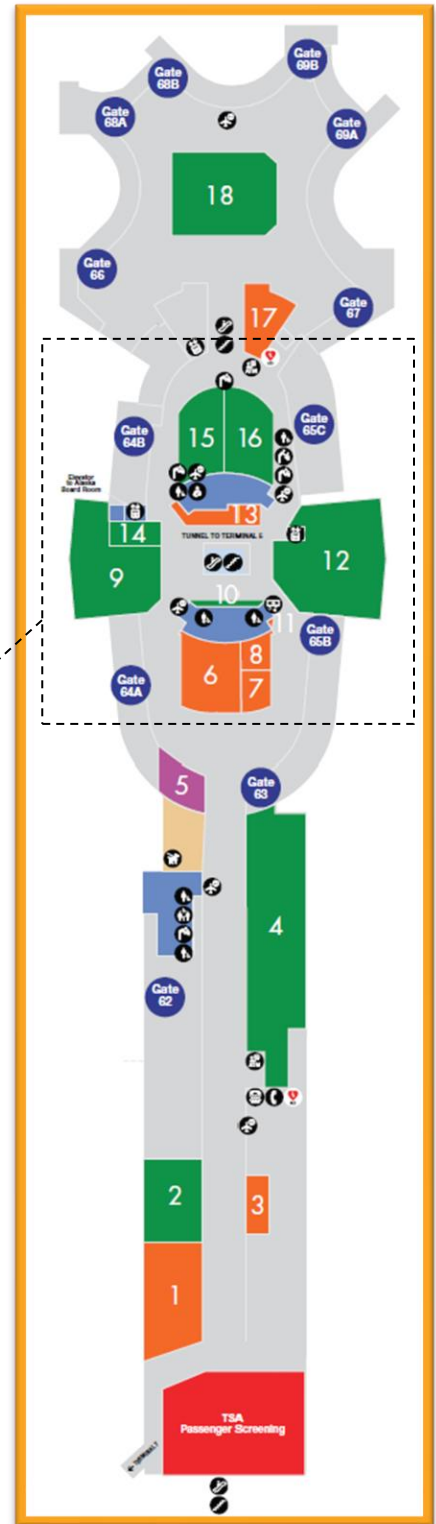
Week of April 10, 2023

## 2. Terminal 6: Airline Gate 65C Closed

- Airline Gate 65C in Terminal 6 is scheduled to close this week on April 15
- It is scheduled to re-open on December 4, 2023
- Next week, Gate 65B is scheduled to close on April 21 and re-open on December 11, 2023
- Watch Construction Hot Topics for more information on upcoming Airline Gate closures and re-openings

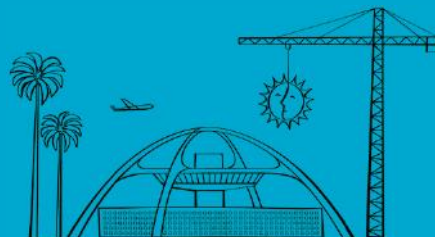


*Airline Gates 65C and 65B in Terminal 6 are scheduled to close in the coming weeks; both are scheduled to re-open later this year in December*



Change is in the Air(port).

**LAX** WAY BETTER. REALLY.

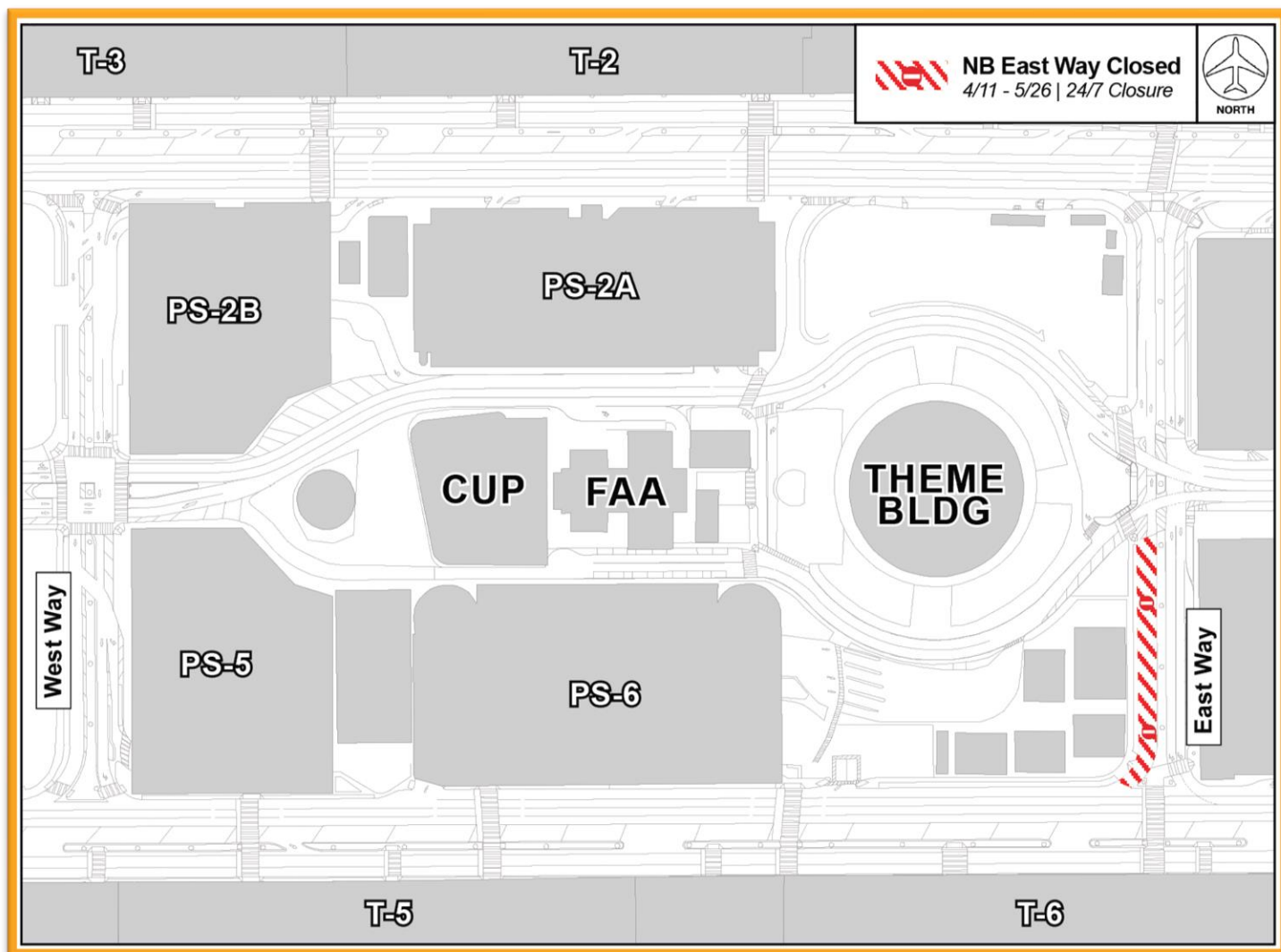


# Construction Hot Topics

Week of April 10, 2023

## 3. [NEW START DATE] Northbound East Way Closure

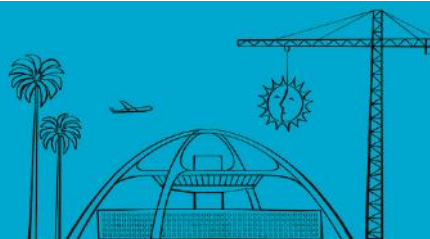
- Starting Tuesday, April 11 at 12AM, northbound East Way will be closed 24/7 to facilitate work for the Landside Access Modernization Program
- It was previously report that this work was to start on Tuesday, April 4
- The roadway is still scheduled to re-open on Friday, May 26 at 6AM (same as previously reported)
- Vehicular and pedestrian detours will be in place, along with flaggers to facilitate the safe flow of traffic
- Please watch for posted signage and use caution when travelling near construction areas



Northbound East Way (Arrivals Level CTA) will be closed 24/7 beginning April 11 through May 26

Change is in the Air(port).

**LAX** WAY BETTER. REALLY.

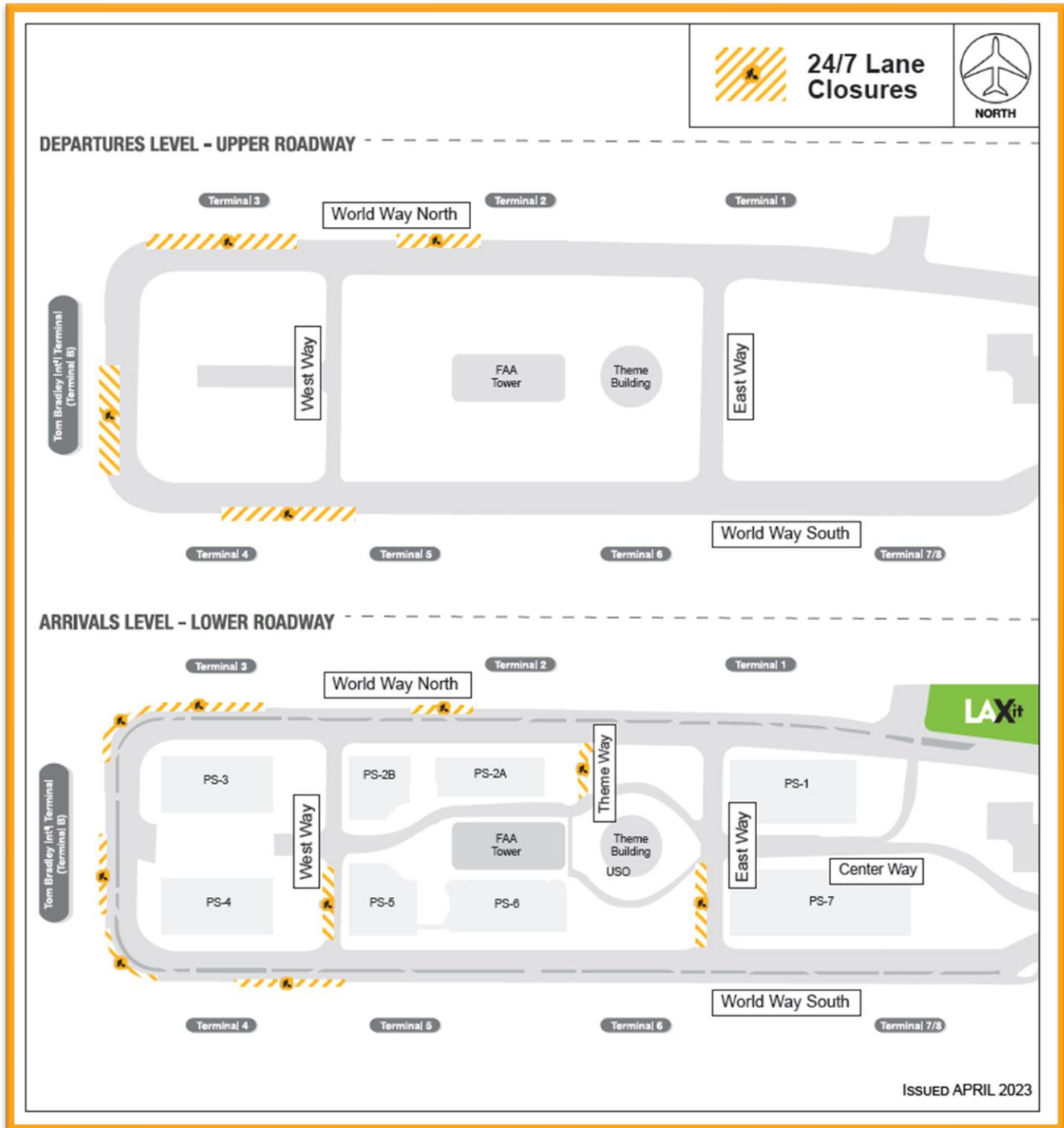


# Construction Hot Topics

Week of April 10, 2023

## 4. April 2023: 24/7 CTA Lane Restrictions

- Scheduled 24/7 lane restrictions for Departures / Upper Level and Arrivals / Lower Level roadways are illustrated on the map below for the month of April 2023
- Traffic will be maintained at all times; please plan ahead for potential delays



Change is in the Air(port).

**LAX** WAY BETTER. REALLY.

