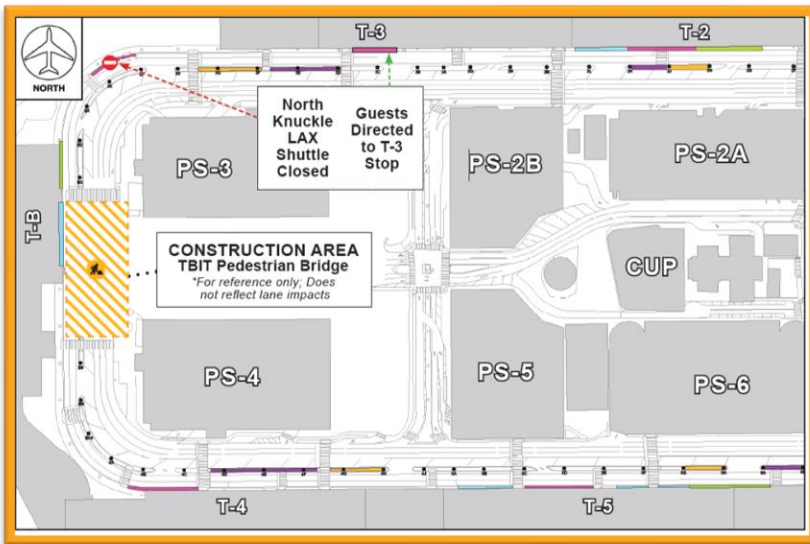


Construction Hot Topics

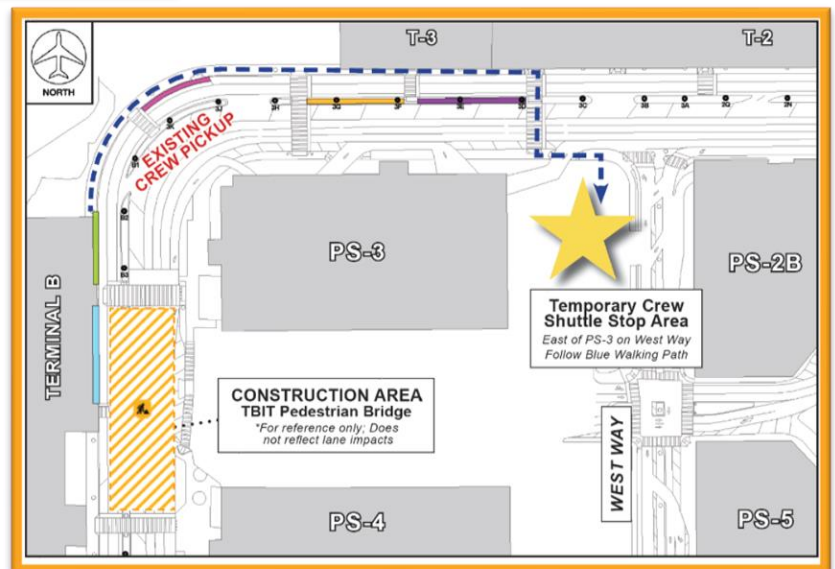
Week of September 19, 2022

1. Terminal B: APM Pedestrian Bridge Construction

- The Automated People Mover project is installing a Pedestrian Bridge over the roadways at Terminal B to connect the terminal to the West CTA Station; construction requires various nightly lane restrictions and / or full closures on World Way at Terminal B beginning this week, Monday, September 19, through mid-October 2022
- To facilitate construction, the LAX Shuttle Stop at the North Knuckle is closed 24/7 through Saturday, October 22; guests are being directed to the next available stop at Terminal 3
- Terminal B Airline Crew Pick-Up, which is typically located at the North Knuckle outer curb, has been temporarily relocated to West Way next to Parking Structure 3
- Please be advised of the vehicular & pedestrian detours associated with these relocations

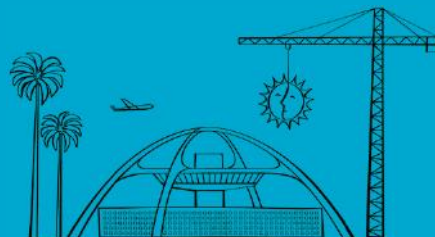


These maps illustrate the APM's construction area for the installation of the Pedestrian Bridge; the map to the left highlights the LAX Shuttle Stop closure and the map below illustrates the Terminal B Airline Crew Pick-Up relocation



Change is in the Air(port).

LAX WAY BETTER. REALLY.

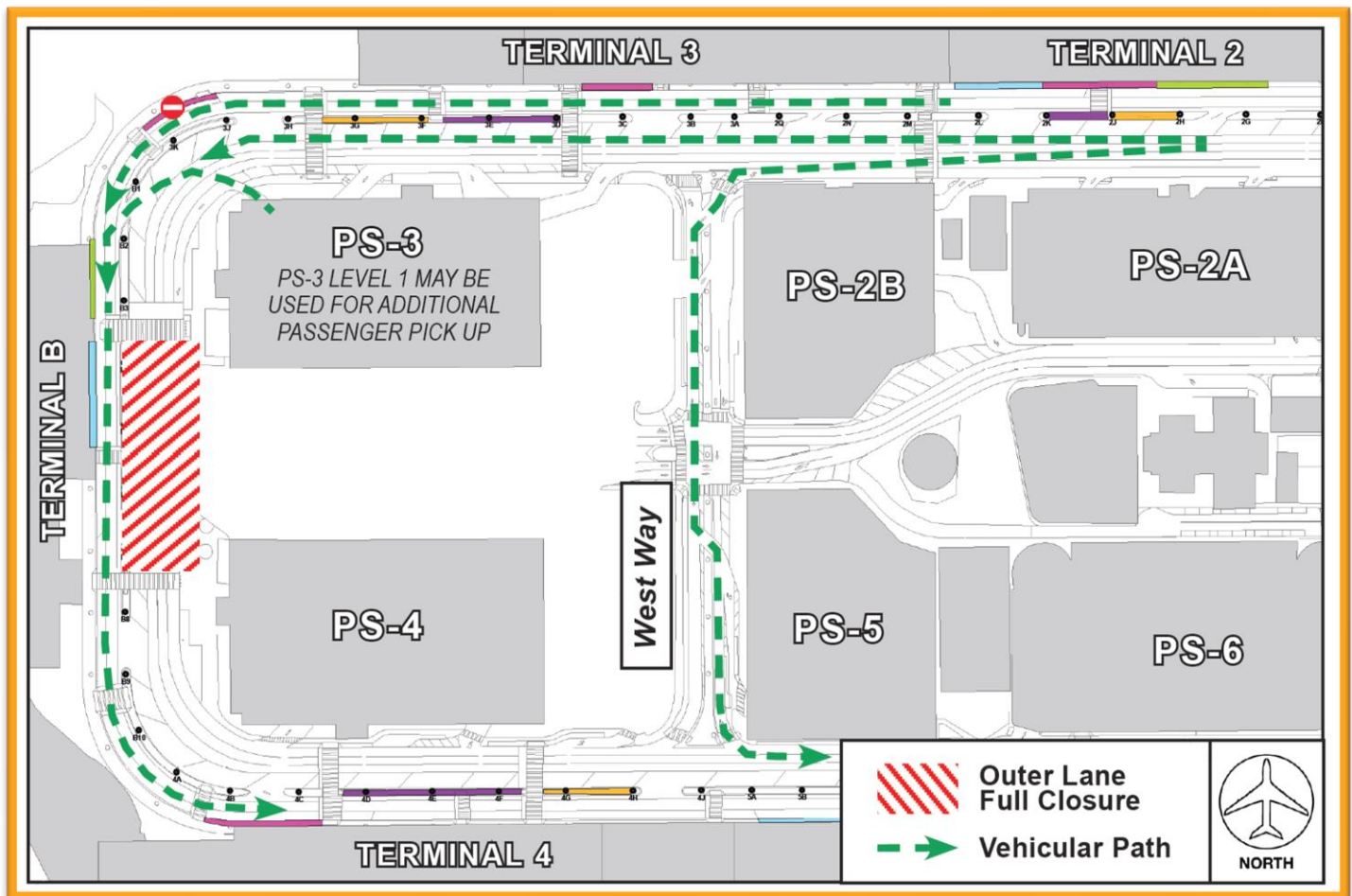


Construction Hot Topics

Week of September 19, 2022

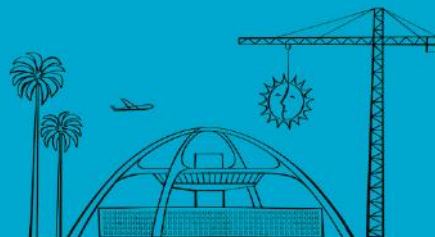
2. Terminal B: APM Pedestrian Bridge Arrivals Level Full Closures

- To facilitate construction of the APM's Pedestrian Bridge at Terminal B, overnight full closures of Arrivals Level Outer Lanes are scheduled for Tuesday, Sep. 20 through Friday, Sep. 23, Sunday, Sep. 25 through Friday, Sep. 30, Sunday, Oct. 2 through Wednesday, Oct. 5, and Friday, Oct. 21 through Saturday, Oct. 22
- These full closures will occur between 11PM and 7AM, with lanes restored during the day
- During these closures, traffic will be detoured to the Inner Lanes around construction. Vehicles may also use southbound West Way to avoid the work area
- To avoid congestion at the Terminal B Passenger Pick Up curbs, guests may use the Ground Level (Level 1) of Parking Structure 3 for additional passenger pick-up. Ingress to and egress from Parking Structure 3 will be maintained at all times
- Flaggers will be in place to assist with vehicular and pedestrian movements. Please watch for signage and follow all detour routes during all phases of work. Always use caution when traveling near construction areas.



Change is in the Air(port).

LAX WAY BETTER. REALLY.

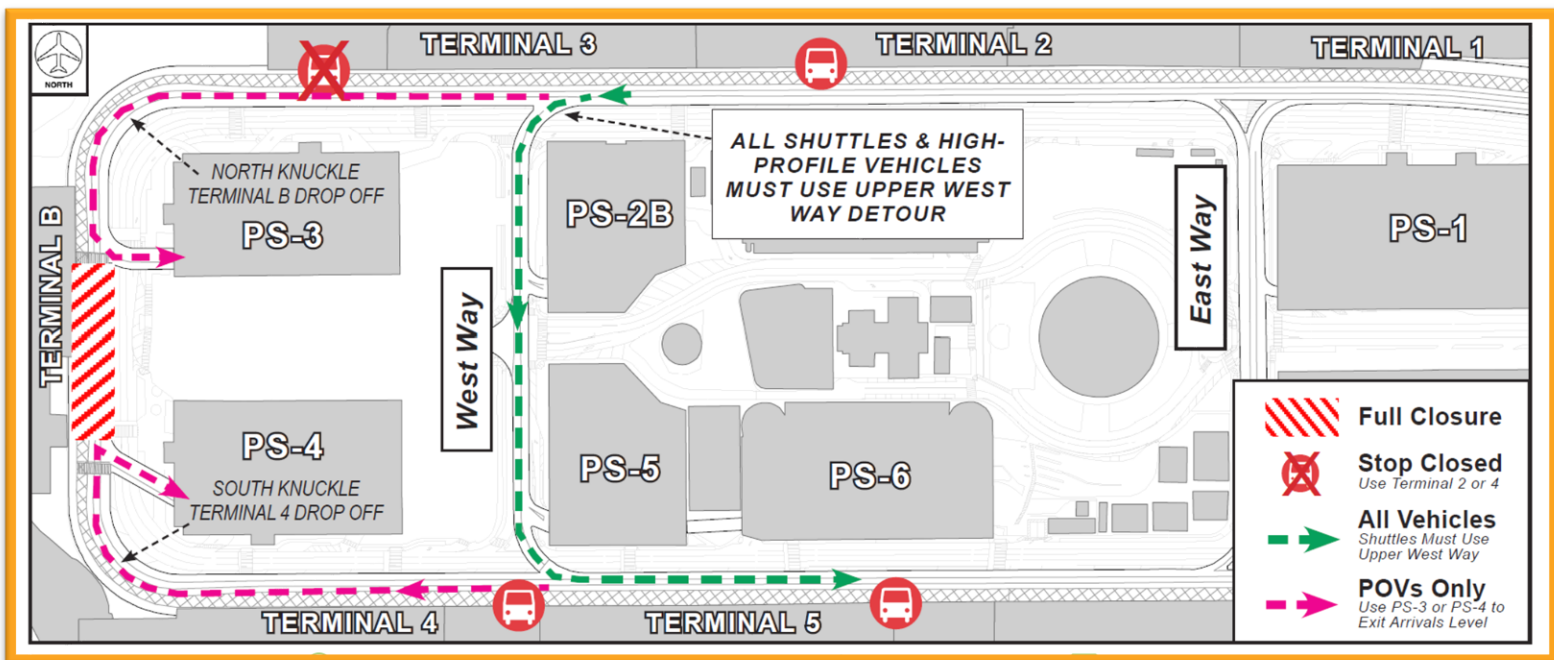


Construction Hot Topics

Week of September 19, 2022

3. Terminal B: APM Pedestrian Bridge Departures Level Full Closures

- To facilitate construction of the APM's Pedestrian Bridge at Terminal B, overnight full closures of the Departures Level roadway are scheduled for Monday, Sep. 26 through Tuesday, Sep. 27, Wednesday, Sep. 28 through Friday, Sep. 30, and Sunday, Oct. 2 through Tuesday, Oct. 4
- These full closures will occur between 12AM and 4AM, with lanes restored during the day
- During closures, the Hotel & Private Parking Shuttle Stop at Terminal 3 will be closed with guests directed to use the stop at Terminal 2
- Personal vehicles may continue to the North Knuckle for Terminal B passenger drop off, using Parking Structure 3 to exit via the Arrivals Level – OR – use Upper West Way and go westbound to the South Knuckle for Terminal 4 passenger drop off, using Parking Structure 4 to exit via the Arrivals Level
- The Departures Level sidewalk at Terminal B (near the work area) will also be closed with guests directed downstairs to the Arrivals Level
- Signage and flaggers will be in place to assist with wayfinding



Change is in the Air(port).

LAX WAY BETTER. REALLY.

