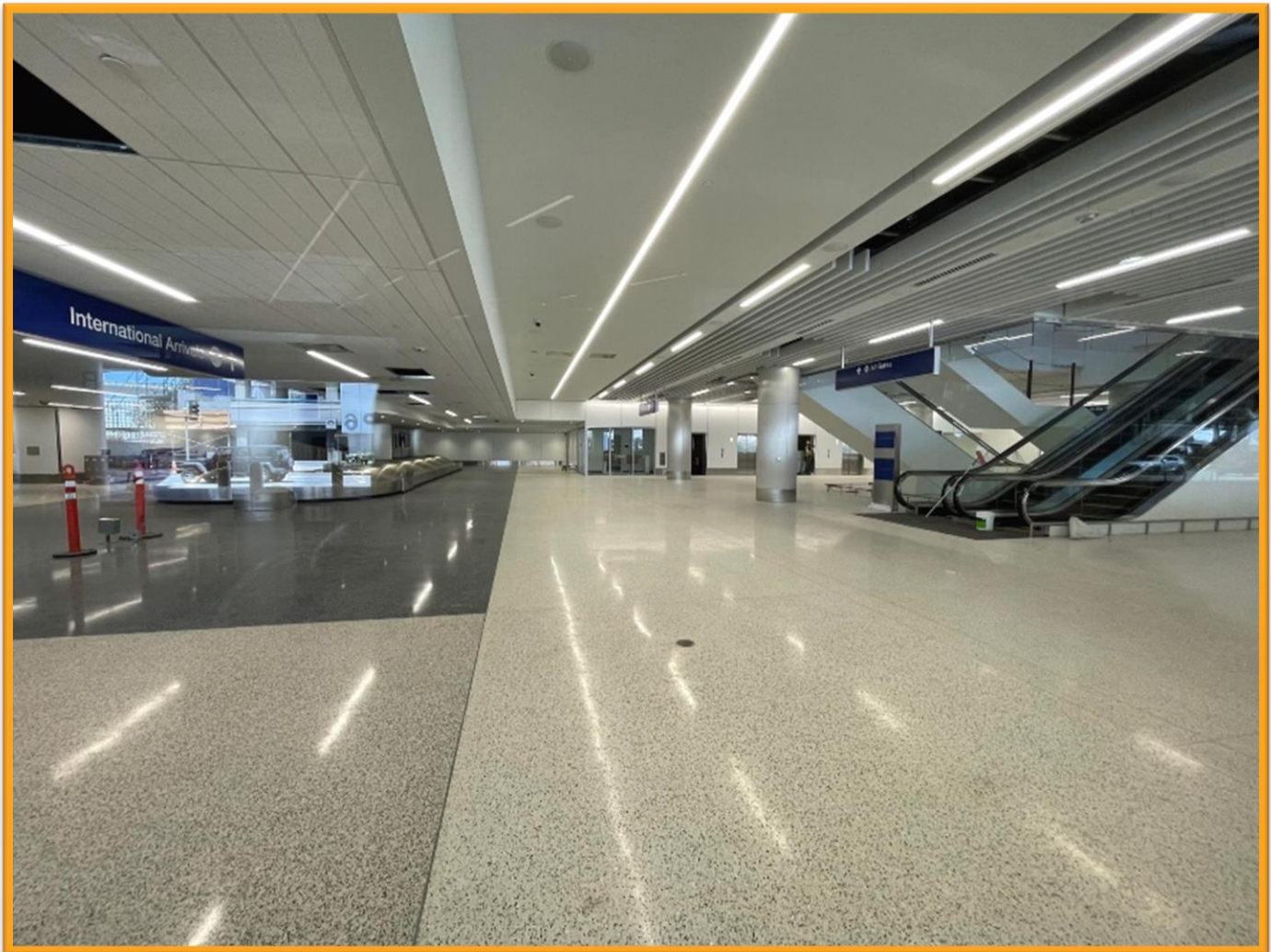


Construction Hot Topics

Week of July 18, 2022

1. Terminal 5.5 Scheduled Opening

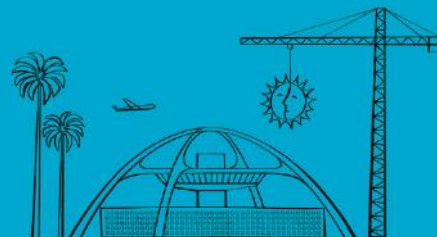
- All levels of the Terminal 5.5 connector building are scheduled to open this week on Wednesday, July 20 as part of the Terminal 5.5 Cores & APM Interface project
- The new building will provide increased connectivity between Terminals 5 and 6, feature updated baggage claim, ticketing and check in areas, and provide a future connection to the Automated People Mover's Center CTA Station



*Pictured: The new Arrivals Level (Level 1) of the Terminal 5.5 connector building
All levels are scheduled to open this week on 7/20/22*

Change is in the Air(port).

LAX WAY BETTER. REALLY.

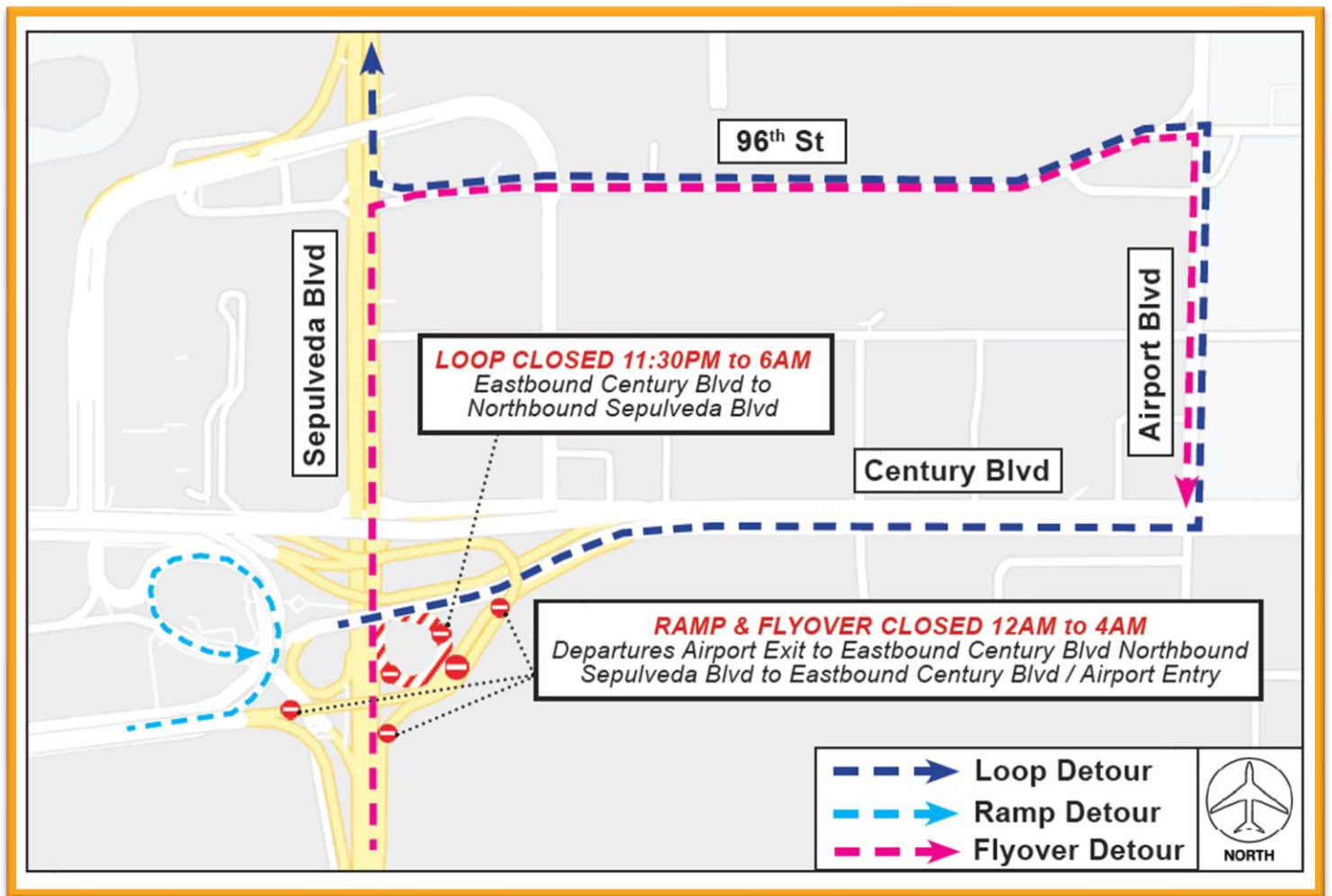


Construction Hot Topics

Week of July 18, 2022

2. LAX East Loop, Ramp & Flyover Scheduled Impacts

- To perform work for the Automated People Mover project, there will be nightly closures of the following areas through this week, Wednesday, July 20:
 - *Eastbound Century Boulevard to northbound Sepulveda Boulevard Loop: 11:30PM to 6AM*
 - *Departures Level Airport Exit to eastbound Century Boulevard Ramp / Northbound Sepulveda Boulevard to Eastbound Century Boulevard / Airport Entry Flyover: 12AM to 4AM*
- Motorists may use Century Boulevard, Airport Boulevard and 96th Street for Loop & Flyover detours, and Departures Level Circle Way to Arrivals Level Center Way for Ramp detours
- Signage will be in place during the closure



Nightly Impacts to the East Loop, LAX Ramp & Flyover through 7/20

Change is in the Air(port).

LAX WAY BETTER. REALLY.

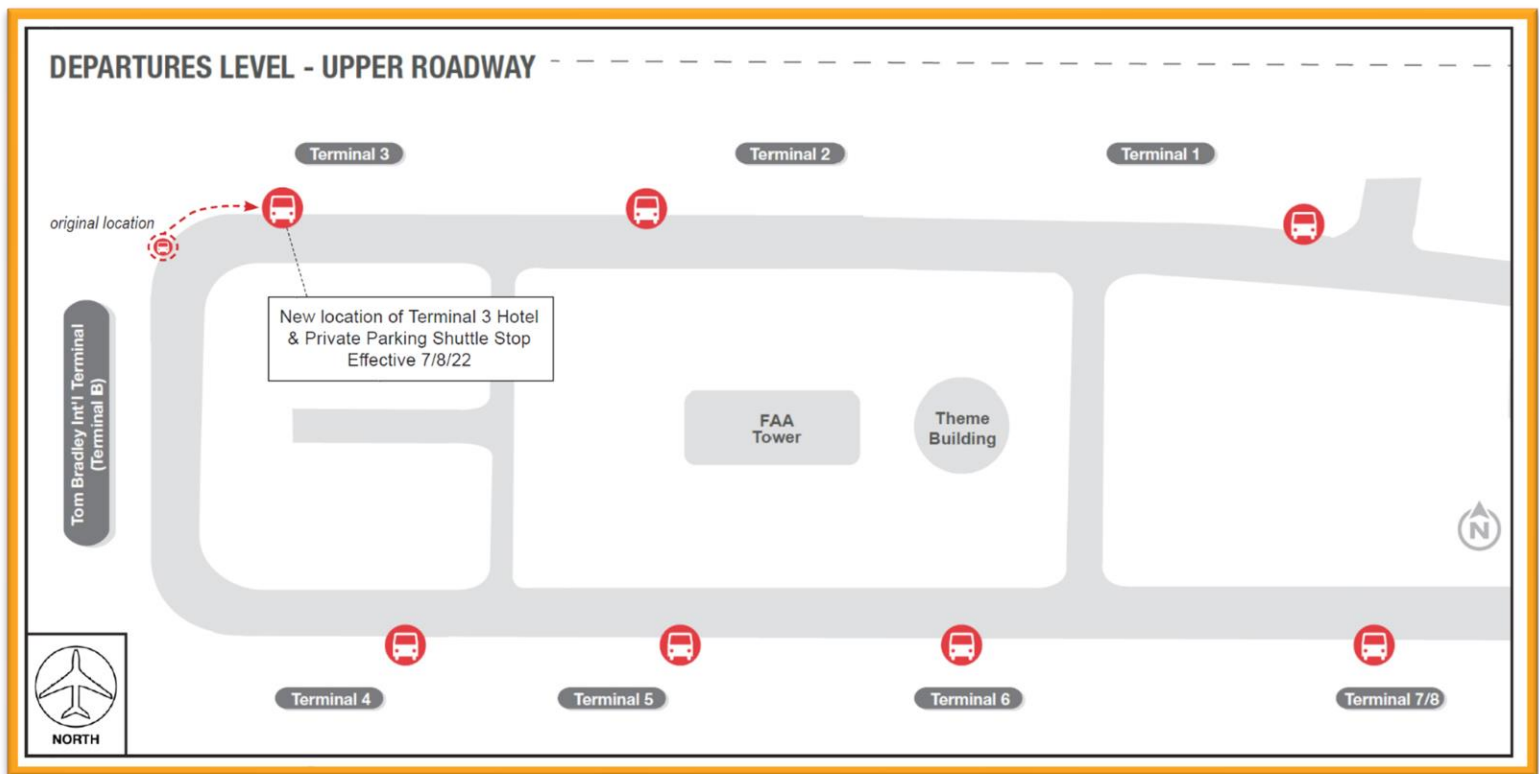


Construction Hot Topics

Week of July 18, 2022

3. Reminder: North Knuckle Hotel & Private Parking Shuttle Stop Relocation

- The Hotel & Private Parking Shuttle Stop, previously located on the Departures Level at the North Knuckle (the area between Terminal 3 and Terminal B) has been relocated closer to Terminal 3 per the map below
- Signage has been updated to reflect this change
- The current LAX Ground Transportation Waiting Areas map can be accessed online at [FlyLAX.com](https://www.flylax.com)



The Departures Level Hotel & Private Parking Shuttle Stop at the North Knuckle has relocated closer to Terminal 3

Change is in the Air(port).

LAX WAY BETTER. REALLY.

