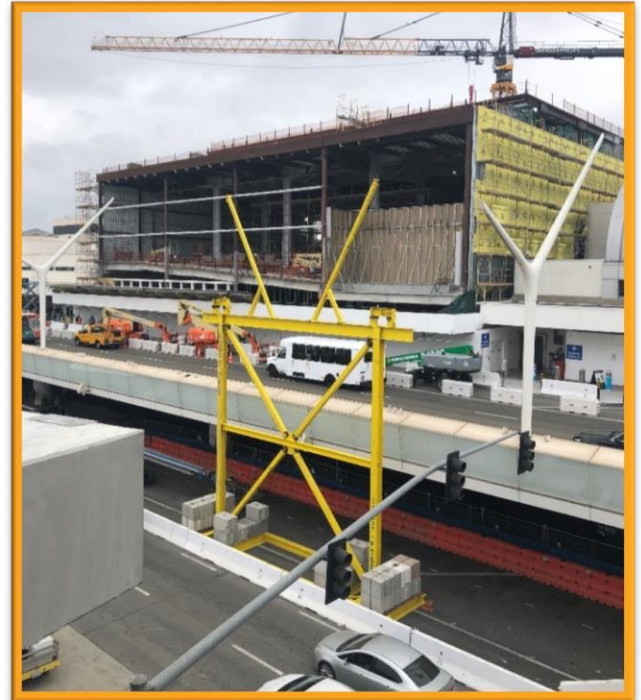


Construction Hot Topics

Week of July 12, 2021

1. Terminal 4.5: APM Pedestrian Bridge Installation

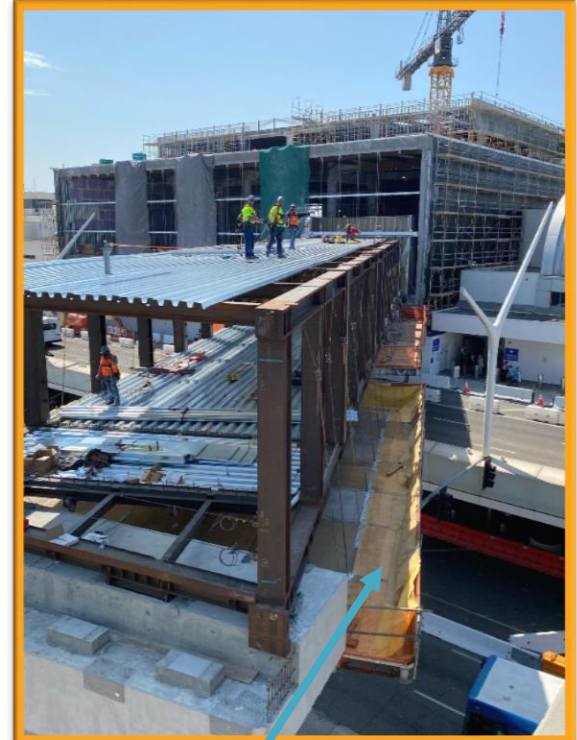
- The yellow shoring tower and barricades in place to support the construction of the Terminal 4.5 Pedestrian Bridge have been removed and all lanes on World Way South are re-opened following the completion of a phase of the bridge installation
- Work on the pedestrian bridge will continue with crews working on a suspended platform under the structure, minimizing impacts to the traveling public
- As work progresses on this project, additional future lane restrictions will be needed; watch Construction Hot Topics for updates



*Shoring tower installed June 2021
with lower level lane restrictions*



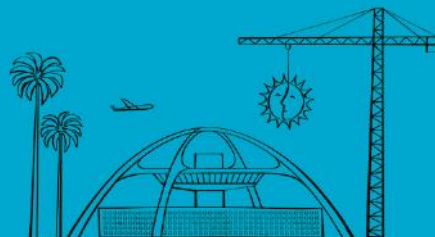
Shoring tower removed & lanes re-opened July 2021



Suspended platform under Pedestrian Bridge

Change is in the Air(port).

LAX WAY BETTER. REALLY.

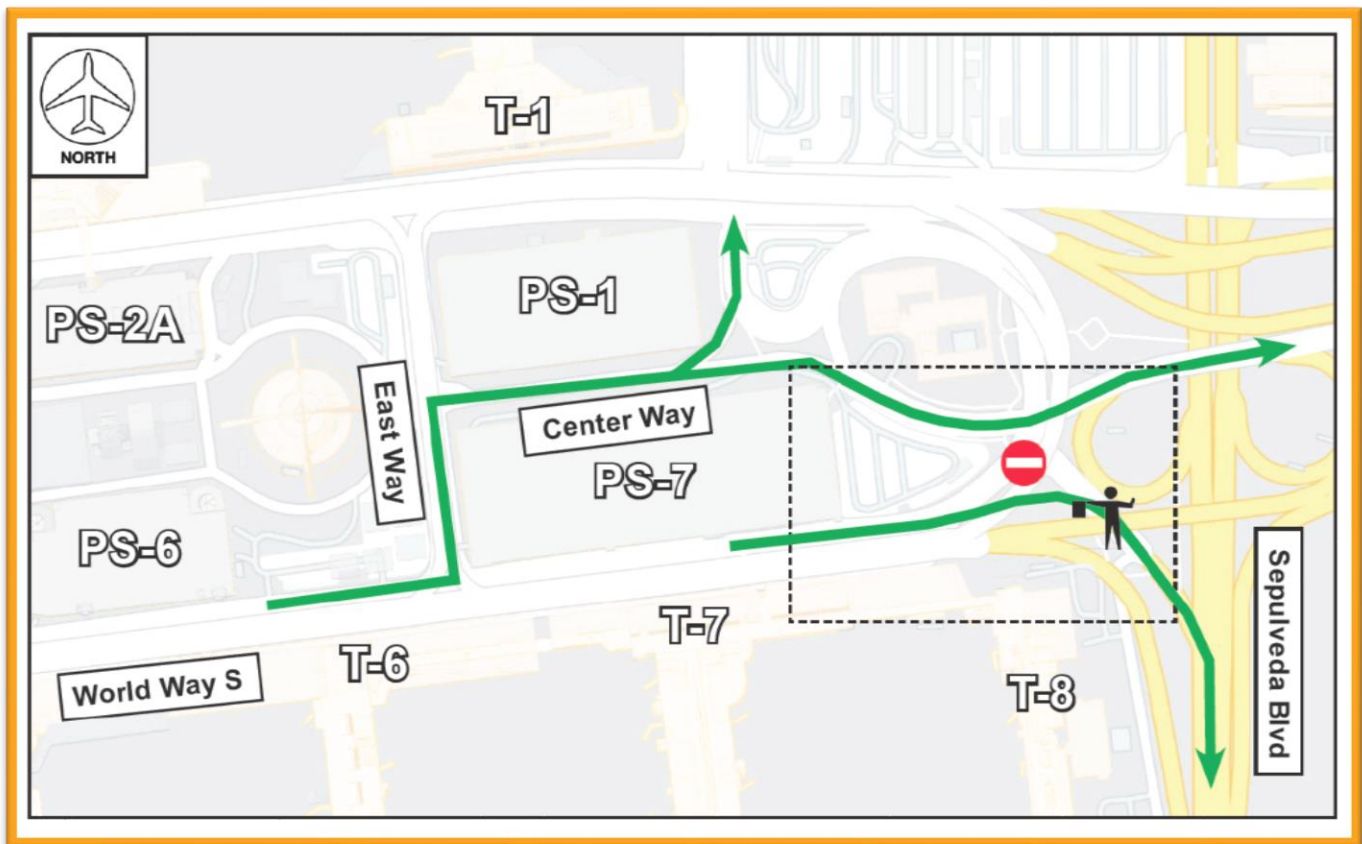
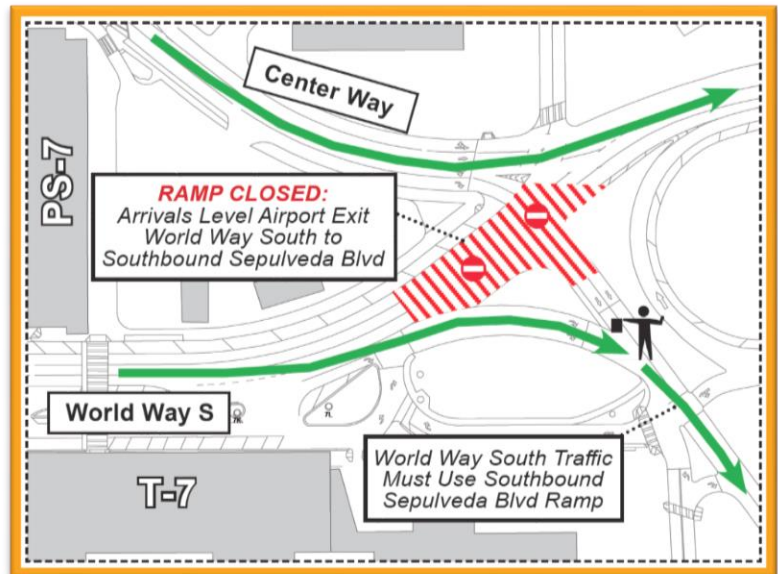


Construction Hot Topics

Week of July 12, 2021

2. Terminal 4.5: APM Pedestrian Bridge Installation

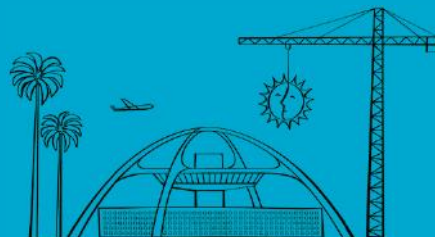
- To facilitate guideway work for the Automated People Mover project, there will be nightly closures of World Way South at the Airport Exit starting this Sunday
- LAX inner lane shuttle stops at Terminals 6 and 7 will be closed with guests directed to Terminal 5 and shuttles detoured
- Outer lane shuttles and POV pick-up will be maintained, being detoured to southbound Sepulveda Boulevard
- Three nights of closures are expected for this phase of work



Nightly closures of World Way South scheduled to begin Sunday 7/18

Change is in the Air(port).

LAX WAY BETTER. REALLY.



Construction Hot Topics

Week of July 12, 2021

3. Terminal B: Construction Progress

- Glass panel installation continues at Terminal B's north end, already showing major progress since last week
- Due to this and other construction, north-side escalators and stairs remain closed with signage in place directing guests to south escalators
- Expect to see more changes at the face of Terminal B as more exterior finishes continue to be installed



Glass installation at Terminal B's north end



Change is in the Air(port).

LAX WAY BETTER. REALLY.

