

# Construction Hot Topics

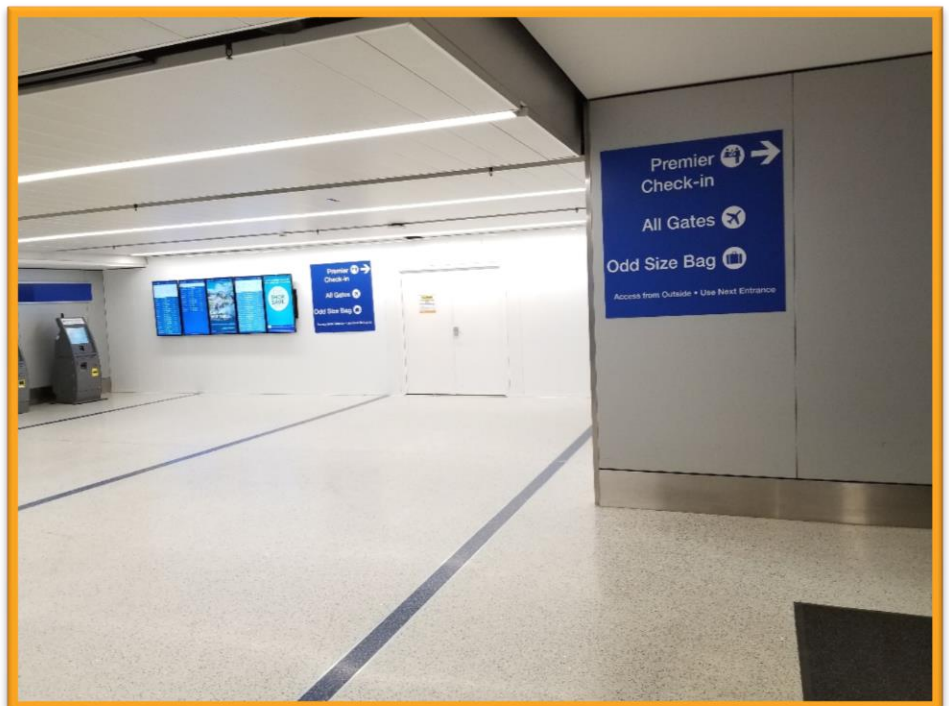
Week of March 30, 2020

## 1. Terminal 7: Departures Level Barricades

- As part of the Terminal 7 Core & APM Interface Project, construction barricades have been built inside the terminal on the Departures Level to facilitate future work for this project; wayfinding signage is in place to detour passengers



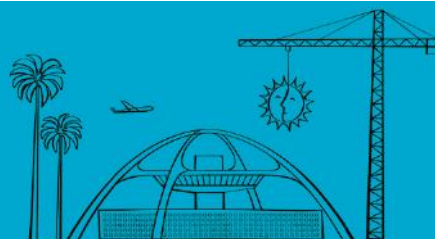
*Terminal 7  
Departures Level*



*Terminal 7  
Departures Level*

Change is in the Air(port).

**LAX** WAY BETTER. REALLY.



# Construction Hot Topics

Week of March 30, 2020

## 2. CTA Roadways: Departures Level Terminal 2 / 3:

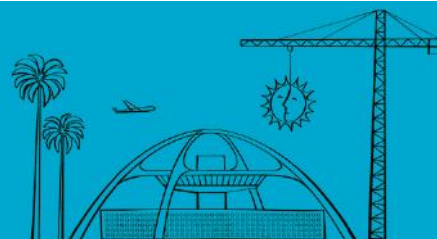
- To facilitate construction for the Delta Sky Way Program, a temporary pedestrian sidewalk, construction barricades and protective canopy are being constructed on the Departures Level between Terminals 2 and 3
- During construction, both drop off lanes at this area are restricted with passenger Drop-Off and Pick-Up prohibited; through traffic will be maintained



*Departures Level construction between Terminals 2 & 3 (roadway)*

Change is in the Air(port).

**LAX** WAY BETTER. REALLY.



# Construction Hot Topics

Week of March 30, 2020

## 3. Terminal 1.5 Exterior Panel Installation

- Exterior finishes (steel and glass paneling) continue to be installed on the front of the Terminal 1.5 building, which faces the Central Terminal Area roadways and is visible to guests
- See photos for the difference one month makes

*Terminal 1.5 as of Monday,  
February 24, 2020*



*Terminal 1.5 as of Monday, March 25, 2020*

Change is in the Air(port).

**LAX** WAY BETTER. REALLY.

