

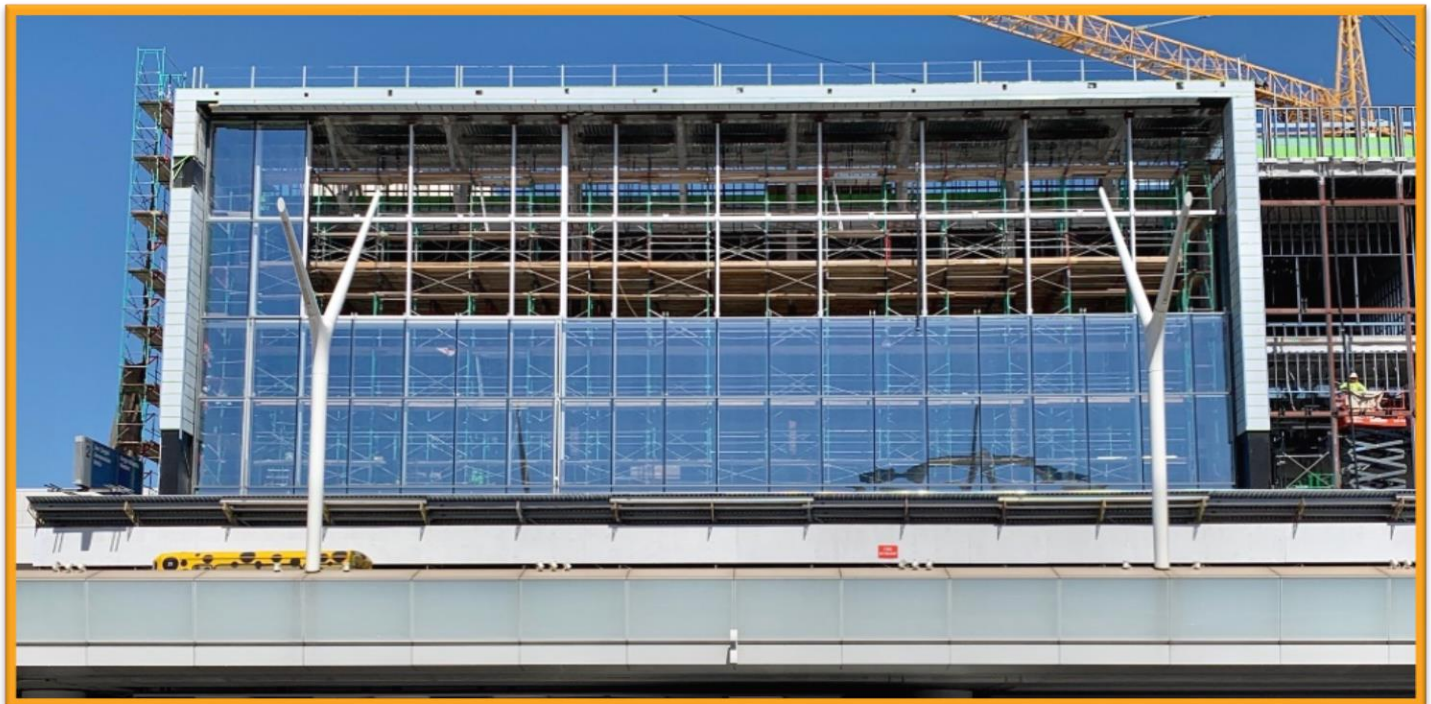
Construction Hot Topics

Week of March 2, 2020

1. Terminal 1.5 Exterior Panel Installation

- Exterior finishes (steel and glass paneling) continue to be installed on the front of the Terminal 1.5 building, which faces the Central Terminal Area roadways and is visible to guests
- See photos for the difference one week makes

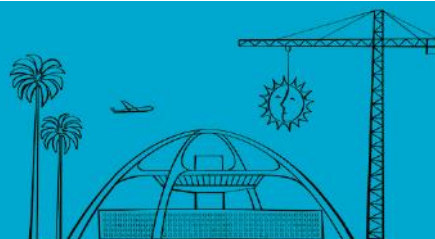
*Terminal 1.5 as of Monday,
February 24, 2020*



Terminal 1.5 as of Monday, March 2, 2020

Change is in the Air(port).

LAX WAY BETTER. REALLY.

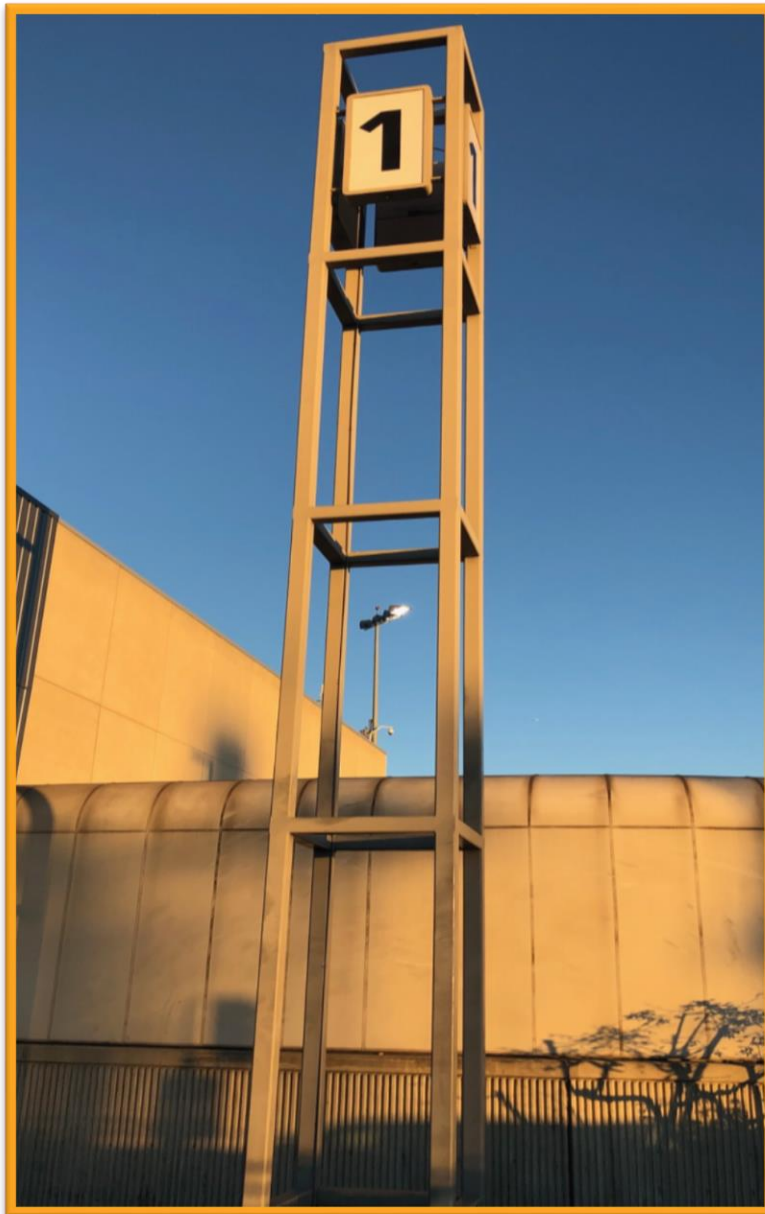


Construction Hot Topics

Week of March 2, 2020

2. Terminal 1 “Monument Sign” Demolition

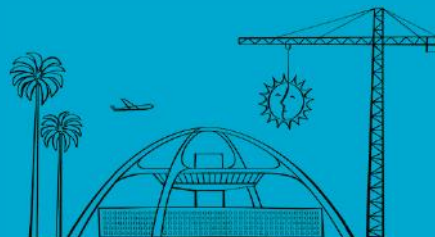
- The Terminal 1 Monument Sign at the east end of Terminal 1 will be demolished nightly this week and next as part of the Terminal 1.5 Project
- Work is scheduled to be complete by Friday, March 13 with minor impacts to guests
- When necessary, pedestrians will be flagged around construction



Terminal 1 Monument Sign

Change is in the Air(port).

LAX WAY BETTER. REALLY.



Construction Hot Topics

Week of March 2, 2020

3. Terminal B: Automated Bag-Drop System

- Terminal B has officially launched an eight-month long pilot program for self-service bag-drop
- Guests can use the new system in Aisles B and C of the Terminal B Ticketing Lobby
- Airline restrictions apply; new airlines scheduled to join throughout the run of the program

Terminal B Automated Bag-Drop System



*Terminal 7
Construction Barricades*

4. Terminal 7: Escalator Demolition

- Barricades are complete and the demolition of Escalator 1 at Terminal 7, which goes from Gate Level to Ticketing Level, is in progress as part of the Terminal 7 Core & APM Interface project
- Once demolition is complete, temporary stairs will be built and the barricade will be removed (expected by end of March 2020)
- Signage is in place directing guests to the nearest stairs and elevators

Change is in the Air(port).

LAX WAY BETTER. REALLY.

