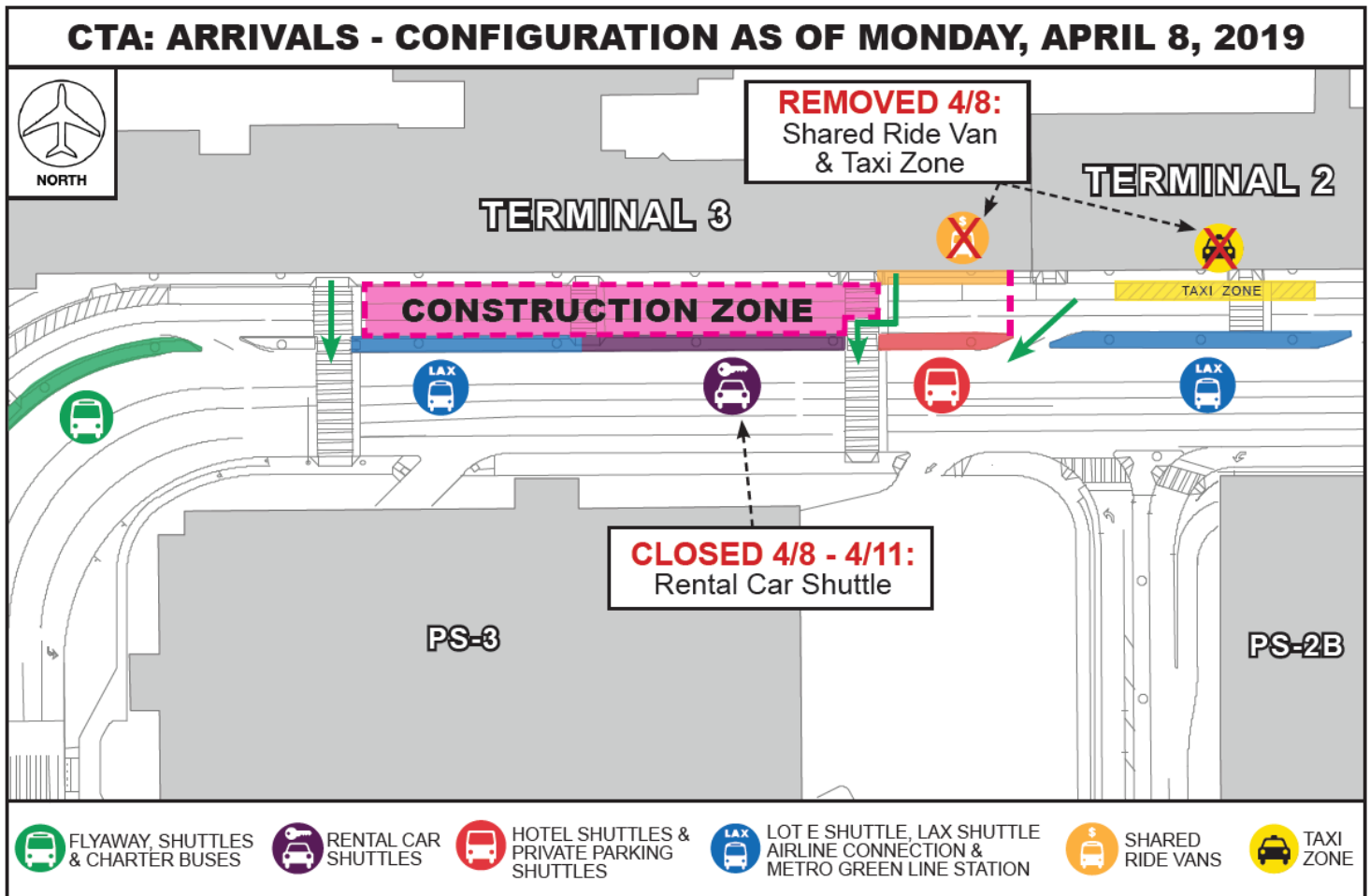


Construction Hot Topics

Week of April 8 – 12, 2019

1. Terminal 3: Arrivals Level Inner Lane Closures & Shuttle Impacts

- All Arrivals Level inner lanes between Columns 3C and 3H (Terminal 3) are closed continuously beginning April 8 through August 1, 2019 for underground utility work related to the Delta Sky Way Project
- The Rental Car Shuttle zone will be closed continuously April 8 through April 11 as construction occurs to widen the median island
- See Page 2 for additional information about Shuttle Stop impacts at this area



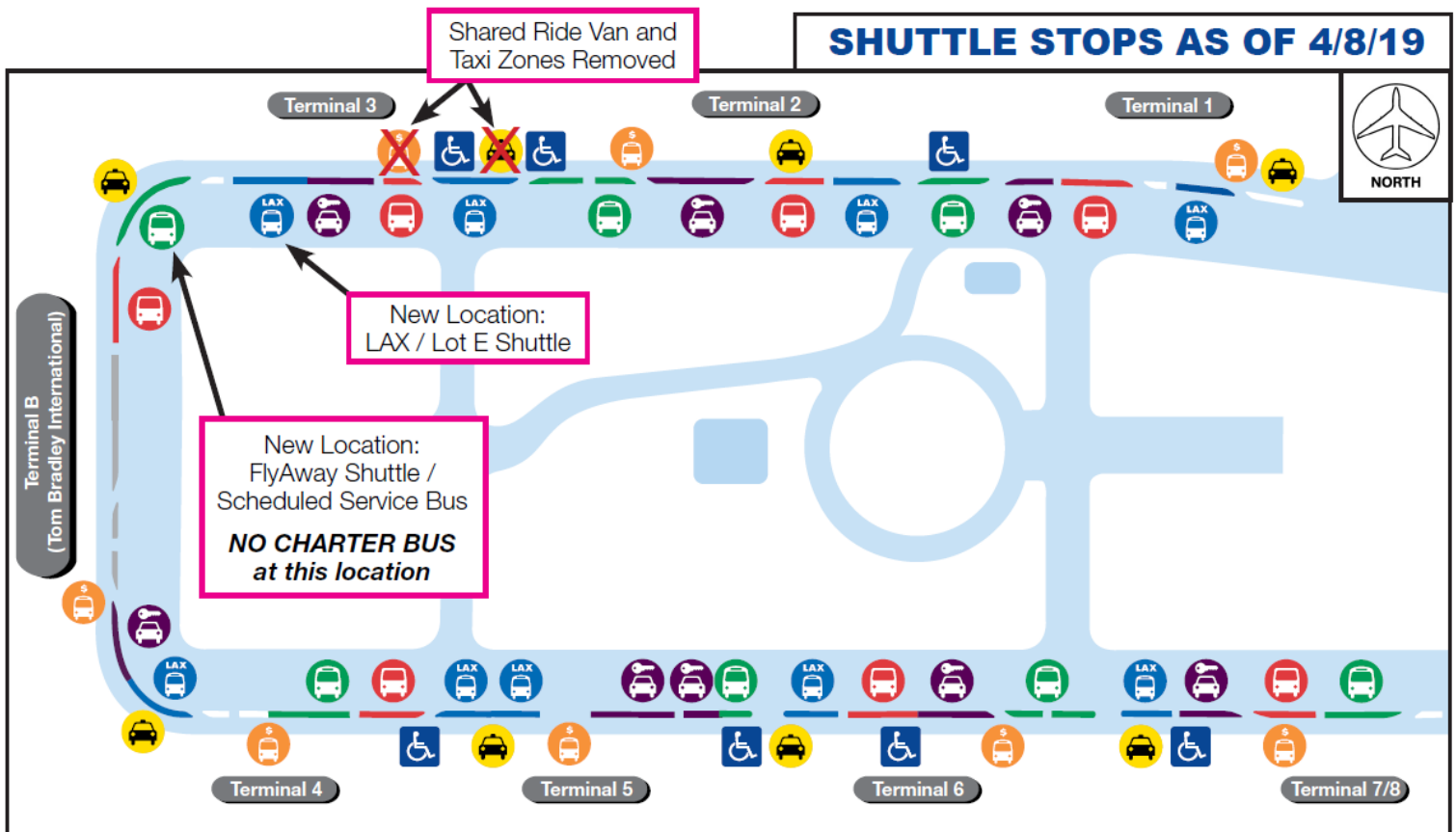
Arrivals Level Terminal 3 Lane Closure Configuration through 8/1/19

Construction Hot Topics

Week of April 8 – 12, 2019

2. Terminal 3 / Terminal B: Ground Transportation Changes

- The LAX / Lot E Shuttle Stop (blue) at the north knuckle between Terminal B and Terminal 3 has changed locations with the FlyAway Shuttle / Scheduled Service Bus Stop (green) at the west end of Terminal 3
- The Shared Ride Van and Taxi Zones at Terminal 3 have been removed
- Shuttle Stop signage has been updated to reflect these changes



- RENTAL CAR SHUTTLES
- FLYAWAY, SHUTTLES & CHARTER BUSES
- LAX LOT E SHUTTLE, LAX SHUTTLE AIRLINE CONNECTION & METRO GREEN LINE STATION
- HOTEL SHUTTLES & PRIVATE PARKING SHUTTLES
- SHARED RIDE VANS
- TAXI ZONE

Ground Transportation Changes as of 4/8/19

FLYLAX.com

[@flyLAXairport](https://twitter.com/flyLAXairport)
[LAInternationalAirport](https://www.facebook.com/LAInternationalAirport)

[@flyLAXairport](https://www.instagram.com/flyLAXairport)
Construction Hotline: 310 649 5292

Construction Hot Topics

Week of April 8 – 12, 2019

3. Terminal 4: Baggage Carousel Closure & New Construction Barricades

- Bag Claim Carousel #2 is closed through December 2, 2019 for work related to American Airlines' Terminal 4 Bag Claim Modifications Project (Phase 2)
- Barricades will receive finishes nightly this week, followed by "Arriving Soon" graphics
- This barricade is scheduled to expand, closing Bag Claim Carousel #1, in late May 2019; watch Construction Hot Topics for updates



Terminal 4, Arrivals Level

4. Terminal B: Finnair and Air Italy Land at LAX

- Finnair and Air Italy have begun operations at Los Angeles International Airport (Terminal B), offering nonstop flights to / from Helsinki, Finland and Milan, Italy, respectively