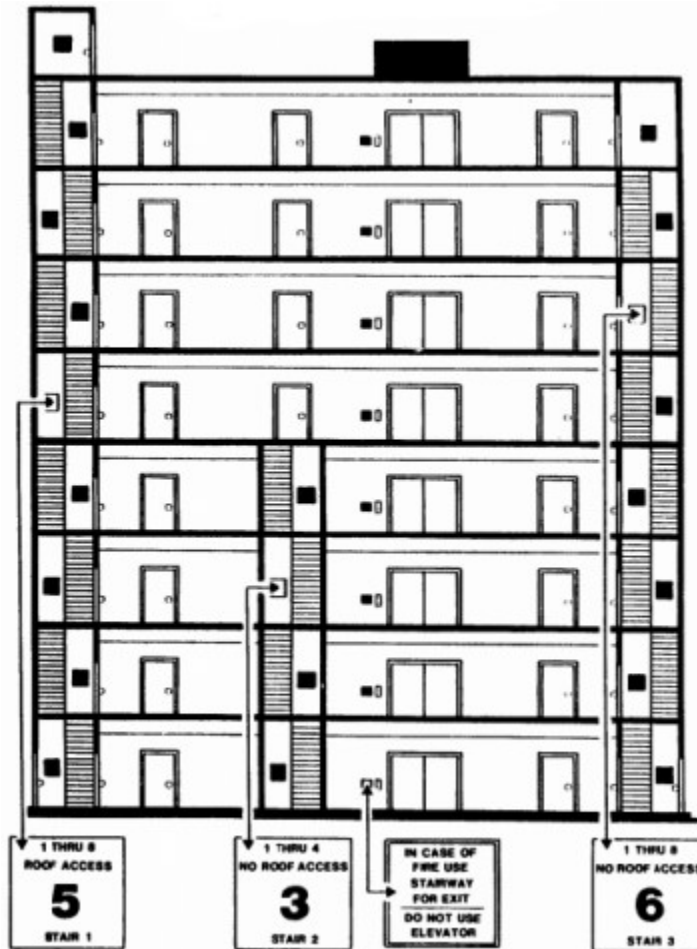




THE LOS ANGELES FIRE DEPARTMENT

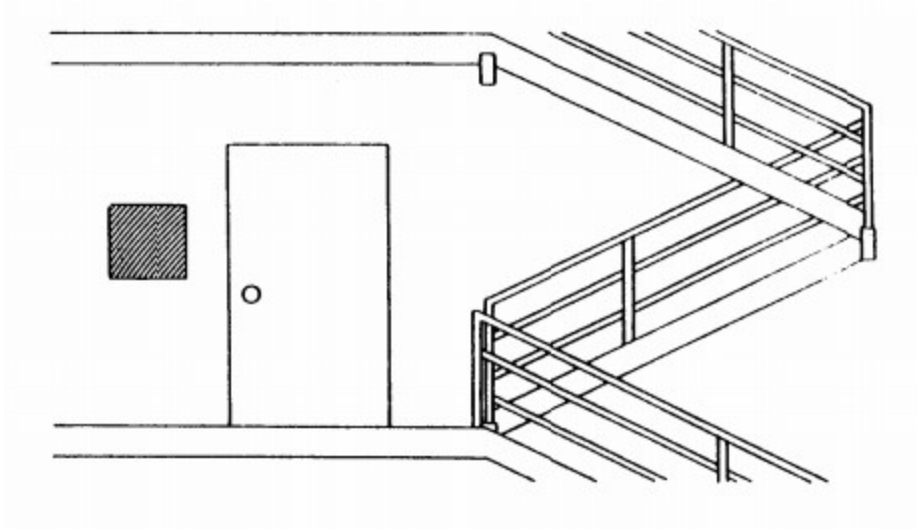
STAIRWAY SIGN PLACEMENT REQUIREMENTS

Look For Stairway Signs and Know Which Stairway Permits Roof Access



Location of Sign in Stairway

The Los Angeles Fire Department Requires Stairway Numbering Systems For Buildings More Than 2 Stories



Example 1:

5th floor of a stairway that extends from the 1st to the 8th floor of an 8 story building. The stairway terminates on the roof. This is the number 1 stairway in the building.



Example 2:

3rd floor of a stairway that extends from the 1st to the 4th floor of an 8 story building. This stairway does not permit roof access. This is the number 2 stairway in the building.



Example 3:

6th floor of a stairway that extends from the 1st to the 8th floor of an 8 story building. This stairway does not permit roof access. This is the number 3 stairway in the building.

**1 THRU 8
NO ROOF ACCESS**

6

STAIR 3