
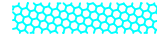







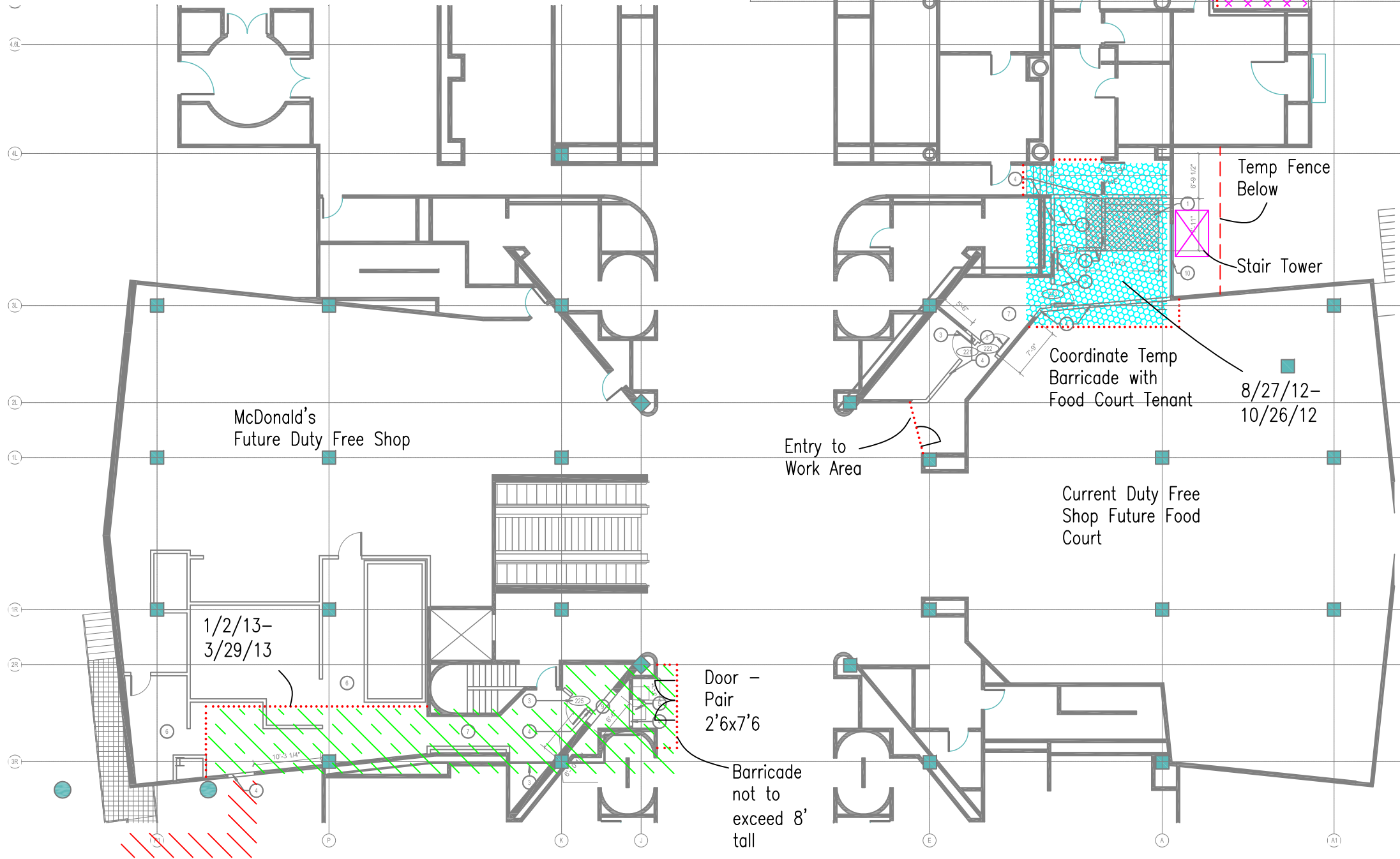


N:\Delta\Job Shared\5200220\PCL Files\Elevator phasing plan 2012-04-30.dwg Date: 5/1/12 @ 3:44 pm By: JKaniter

-  Kid Zone Buildout
6/13/12-7/13/12
-  Elevator Lobby
8/27/12-10/26/12
-  Catwalk
9/5/12-10/2/12
-  Service Corridor
McDonald's move-out
+ 7 weeks

- Legend**
-  Fencing
 -  Temp Wall
 -  Signage
 -  Worker Emergency Path of Travel
 -  Tenant Revised Path of Travel



NOTES:

- A. General Contractor will have a full time superintendent stationed at the jobsite. Superintendent will meet all requirements for badging, escorting, and driving requirements prior to construction mobilization. Superintendent will be responsible for all coordination of access, scheduling and interfacing with the airport operations for general contractor and their subcontractors.
- B. Subcontractor parking shall be located offsite. Workmen are not to use LAX inter-terminal shuttle buses.
- C. All materials will be stored within the site SOW areas.
- D. No on site and/or temporary facilities are required for this scope of work
- E. Security provisions shall be provided per LAWA standards.
- F. Emergency contact information will be posted at all on-site entrances.
- G. Construction duration is May 2012 to October 2012.
- H. Emergency vehicles will utilize existing LAWA fire lanes. Emergency evacuation routes will be maintained except as indicated on drawings.
- I. Sound mitigation shall be employed during demolition adjacent Delta offices.
- J. General construction hours behind construction barricades will be 6 AM to 6 PM. Construction creating excessive noise will be performed between 11 PM and 4 AM. All barricade installations shall occur during the off-peak hours of 11 PM to 6 AM.
- K. For utility shutdowns, please see LAWA Design Guideline for appropriate forms section 1.31.6. Forms must be submitted to LAWA 30 days prior to shutdown. Shutdowns shall occur during a maximum four hour window between 12 AM and 4 AM unless otherwise approved by LAWA.
- L. Site survey and environmental review shall be performed prior to demolition.
- N. Dust, dirt, and debris shall be mitigated by the following means:
 1. Additional filters added to return air grilles.
 2. Continuous cleanup using clean sweep absorbent.
 3. Barriers between work areas and tenant spaces to be sealed off.
- O. Barricade system erected by the tenant is subject to final inspection and acceptance by the CALM team. The final inspection will include but is not limited to wall components, vinyl base, finish, paint, & temporary signage. Tenant will incorporate all recommendations by the CALM team made during the field inspection.
- P. Contractor to provide walk off mat on the inside of barricade door & must keep area outside of barricade free from construction dust and debris.
- Q. Contractor to follow OSHA standard title 29 CFR Part 1910.147 for lockout/tagout procedures.
- R. Doors to have combination lock. Combination to be provided to LAWA PD - Ruth Avalos, ravalos@LAWA.org

SCOPE OF WORK:

- A. Abatement survey, collision detection and identification,
- B. Relocate existing tenants
- C. Submit USR's
- D. Install temporary construction barricades
- E. Demo as required
- F. Framing
- G. Install electrical/data,
- H. Rework of existing MEP
- I. Install door frames
- J. Inspections
- K. Drywall, tape, paint
- L. MEP trim out
- M. Install doors and hardware
- N. Install grid and ceiling tile
- O. Install millwork
- P. Flooring/baseboard
- Q. Remove construction barricades
- R. Relocate tenants to new location

EMERGENCY CONTACTS:

- A. Mike Williams, Project Superintendent 425-495-5798
- B. Steven Maragakis, Field Superintendent 818-823-8546



PCL CONSTRUCTION SERVICES, INC.
LOS ANGELES DISTRICT
Glendale, California

**DELTA T5
NEW SERVICE ELEVATOR**
LOS ANGELES INTERNATIONAL AIRPORT

NO.	DATE	REVISIONS
1	4/2/12	Plan Modifications
2	4/25/12	LAWA Walk
3	4/26/12	LAWA Comments
4	5/1/12	Final Review



Concourse Logistics/Phasing Lvl 3

Dwn By: GT		LOS ANGELES WORLD AIRPORTS	
Ck By: SM	Job No.: 5200220	Date: 3/22/12	
Scale:	Drawing No.: PCL Site 2		

