

APPENDIX C

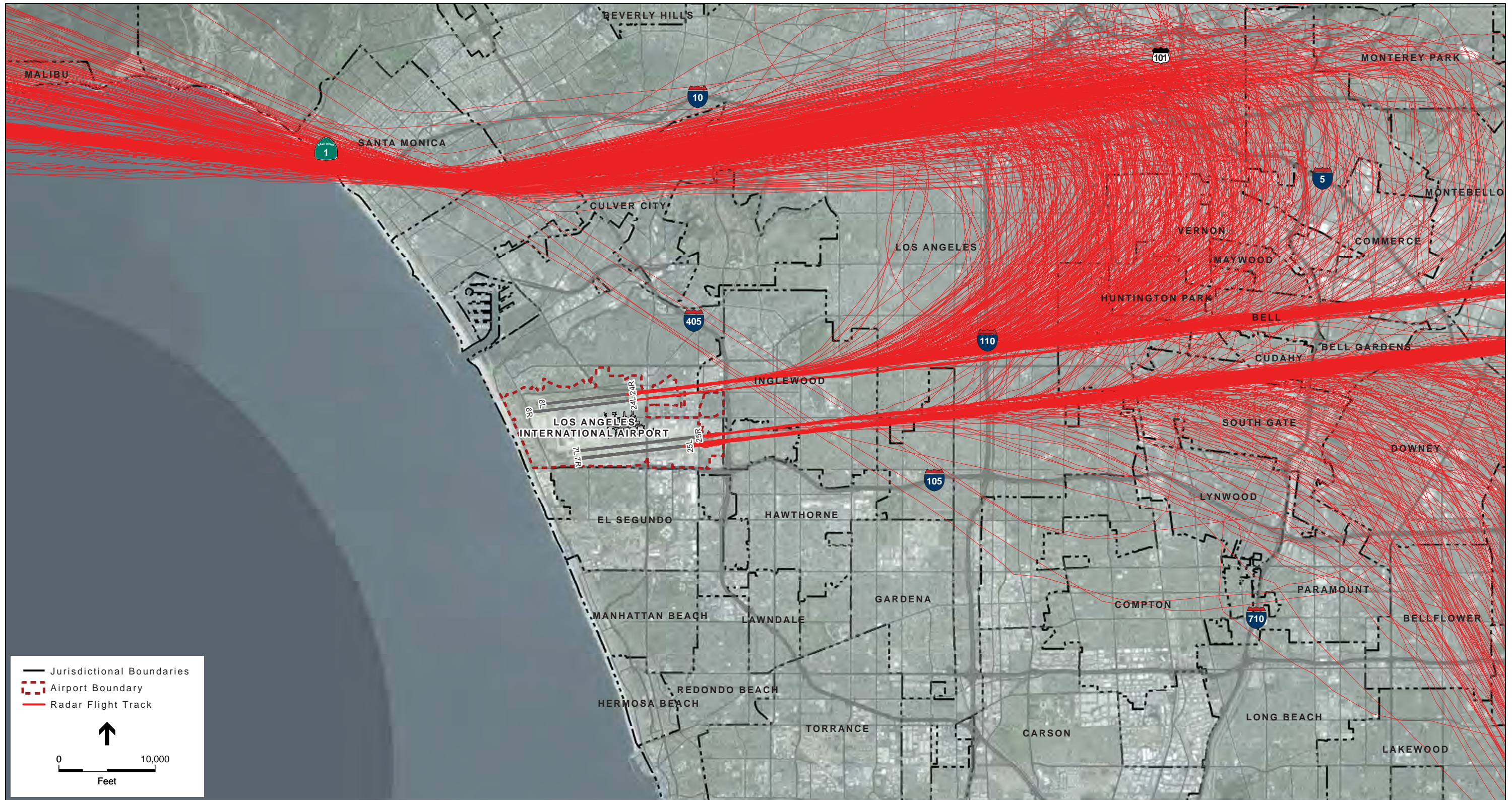
Radar Flight Tracks for Los Angeles International Airport

C.1 Radar Flight Track Exhibits

Exhibits included in this Appendix present radar flight track data from LAWA's Airport Noise and Operations Management System (ANOMS) superimposed on an aerial photograph depicting the Airport and its environs. The aircraft flight tracks depicted on the exhibits are based on actual arrival and departure operations that occurred during calendar year 2013.

- **Exhibit C-1** presents a sample of arrival flight tracks from the east.
- **Exhibit C-2** presents a sample of arrival flight tracks from the west.
- **Exhibit C-3** presents a sample of departure flight tracks to the east.
- **Exhibit C-4** presents a sample of departure flight tracks to the west.

This page intentionally left blank

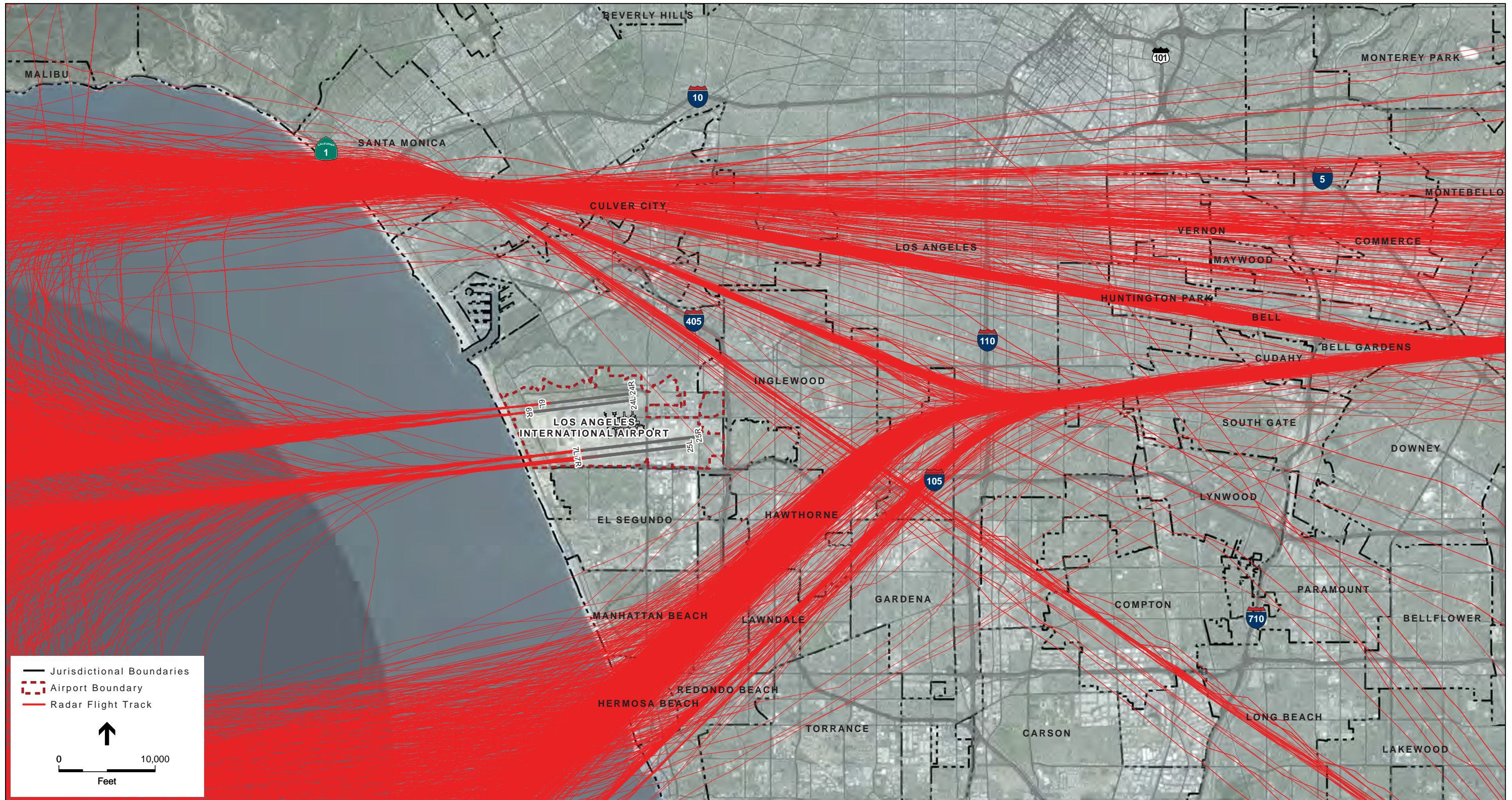


SOURCES: LAWA Airport Noise and Operations Management System data, 2013; LA Co. DRP, 2014; City of LA DCP, 2013; ESA Airports, 2014; ESRI ArcGIS Online, 2011; PCR Services Corporation, 2012

Los Angeles International Airport 14 CFR Part 150 Study . 130072.03

Exhibit C-1
Radar Flight Tracks – Arrivals from the East

This page intentionally left blank

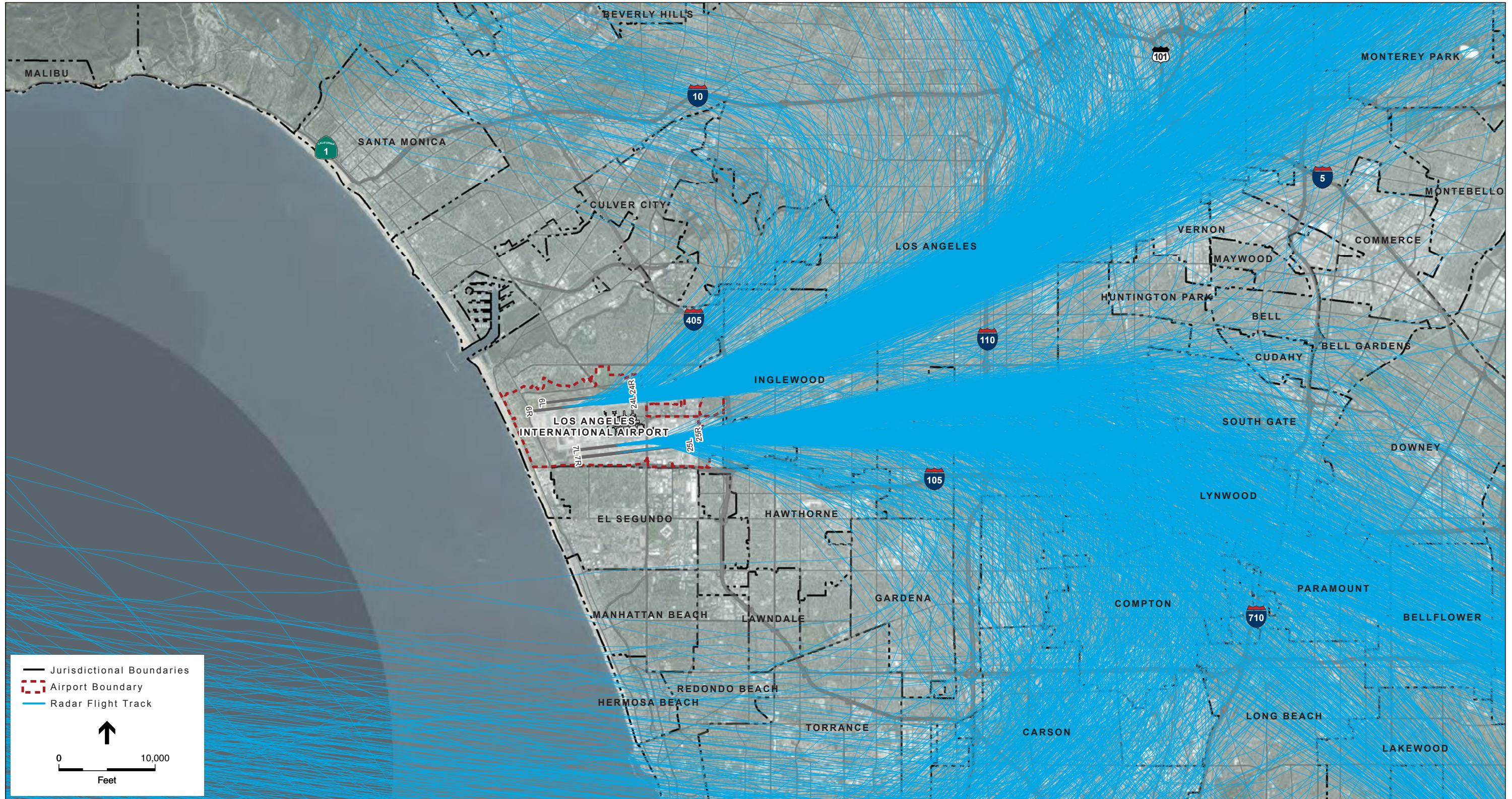


SOURCES: LAWA Airport Noise and Operations Management System data, 2013; LA Co. DRP, 2014; City of LA DCP, 2013; ESA Airports, 2014; ESRI ArcGIS Online, 2011; PCR Services Corporation, 2012

Los Angeles International Airport 14 CFR Part 150 Study . 130072.03

Exhibit C-2
Radar Flight Tracks – Arrivals from the West

This page intentionally left blank



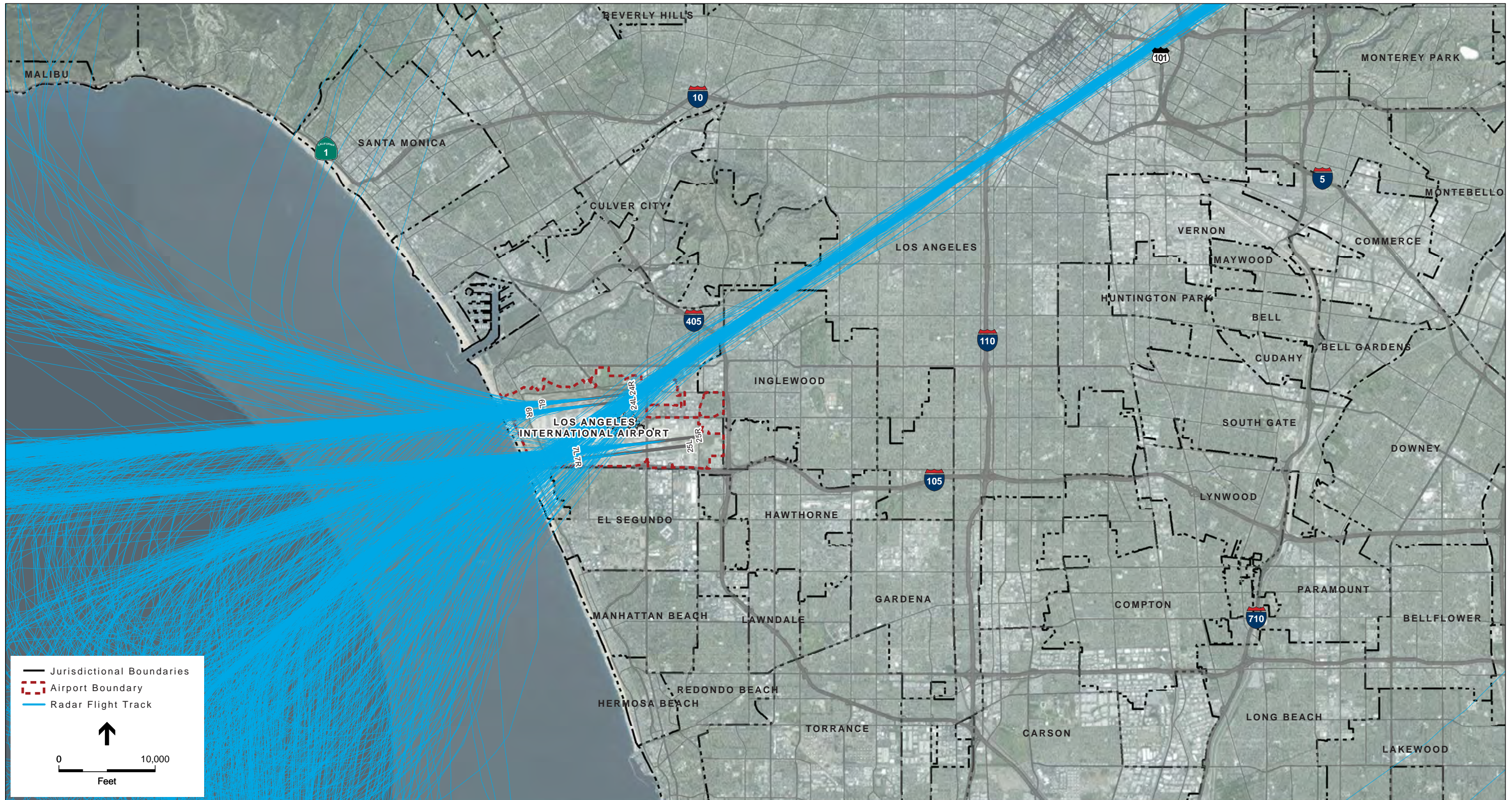
SOURCES: LAWA Airport Noise and Operations Management System data, 2013; LA Co. DRP, 2014; City of LA DCP, 2013; ESA Airports, 2014; ESRI ArcGIS Online, 2011; PCR Services Corporation, 2012

Los Angeles International Airport 14 CFR Part 150 Study . 130072.03

Exhibit C-3

Radar Flight Tracks – Departures to the East

This page intentionally left blank



SOURCES: LAWA Airport Noise and Operations Management System data, 2013; LA Co. DRP, 2014; City of LA DCP, 2013; ESA Airports, 2014; ESRI ArcGIS Online, 2011; PCR Services Corporation, 2012

Los Angeles International Airport 14 CFR Part 150 Study . 130072.03

Exhibit C-4

Radar Flight Tracks – Departures to the West