

California State Airport Noise Standards Quarterly Report

Third Quarter 2022



LOS ANGELES INTERNATIONAL AIRPORT

Los Angeles World Airports

December 19, 2022

TABLE OF CONTENTS

California State Airport Noise Standards Quarterly Report

1. Division of Aeronautics Form 617
2. Incompatible Land Use Data
3. Daily Aircraft CNEL Data
4. Runway Utilization Report
 - Summary of Runway Use
 - Summary of Runway Flow
5. Average Daily Runway Use by Aircraft Type
 - 24 Hour Average
 - Night-time Average (10pm – 7am)
6. Average Daily Runway Use by Aircraft Group
 - 24 Hour Average
 - Night-time Average (10pm – 7am)
7. Summary of Actions

Attachment

Noise contour map

**SUMMARY OF STATISTICAL INFORMATION
FOR
CALIFORNIA DEPARTMENT OF TRANSPORTATION**

Los Angeles International Airport
Third Quarter 2022

1. Size of Noise Impact Area as defined in the Noise Standards (California Code of Regulations, Title 21, Chapter 2.5, Subchapter 6):

365.3 Acres

2. Estimated number of dwelling units included in the Noise Impact Area as defined in the Noise Standards:

4,610

3. Estimated number of people residing within the Noise Impact Area as defined in the Noise Standards:

17,722

4. Identification of aircraft type having highest takeoff noise level operating at this airport together with estimated number of operations by this aircraft type during the calendar quarter reporting period:

B747: 2,942

5. Total number of aircraft operations during the calendar quarter*:

144,776

6. Number of Air Carrier operations during the calendar quarter: (Not Mandatory)*

134,275

7. Percentage of Air Carrier operations by aircraft certificated under Federal Aviation Regulation (FAR) Part 36, Stage III. (Not Mandatory)

100 %

8. Estimated number of operations by General Aviation aircraft during the calendar quarter: (Not Mandatory)*

4,287

9. Estimated number of operations by Military aircraft during the calendar quarter: (Not Mandatory)*

115

LOS ANGELES INTERNATIONAL AIRPORT

Incompatible Land Use

Annual Noise Impact Accumulated by Noise Zone: CNEL 65, 70, and 75 +

3Q22	Total Cumulative Noise Impact Areas - All Jurisdictions											
	<i>CNEL 65 dB and Above</i>				<i>CNEL 70 dB and Above</i>				<i>CNEL 75 dB and Above</i>			
	Land Use	Acres	Dwelling Units	Parcels	Population	Acres	Dwelling Units	Parcels	Population	Acres	Dwelling Units	Parcels
Single Family	182.4	1,251	1,279	4,759	32.5	212	215	973	0.0	0	0	0
Multi-Family	162.3	3,347	1,004	12,929	34.1	622	237	2,522	0.0	0	0	0
Mobile Home	0.6	0	2	0	0.0	0	0	0	0.0	0	0	0
Schools	5.0	0	23	0	3.0	0	17	0	0.0	0	0	0
Churches	15.0	12	30	34	2.4	0	2	0	0.0	0	0	0
Hospitals	0.0	0	0	0	0.0	0	0	0	0.0	0	0	0
Total Incompatible	365.3	4,610	2,338	17,722	72.0	834	471	3,494	0.0	0	0	0

Note: Parcels and dwelling units may not match for single family land uses due to subdivision.
Parcels for multifamily land uses reflect only the common area parcel, except for condominiums.

Report Date: 11/04/2022

LOS ANGELES INTERNATIONAL AIRPORT

Incompatible Land Use

Annual Noise Impact Accumulated by Noise Zone: CNEL 65, 70, and 75 +

3Q22	Total Cumulative Noise Impact Areas - Athens											
	<i>CNEL 65 dB and Above</i>				<i>CNEL 70 dB and Above</i>				<i>CNEL 75 dB and Above</i>			
	Land Use	Acres	Dwelling Units	Parcels	Population	Acres	Dwelling Units	Parcels	Population	Acres	Dwelling Units	Parcels
Single Family	15.5	119	132	444	0.0	0	0	0	0.0	0	0	0
Multi-Family	15.5	277	110	989	0.0	0	0	0	0.0	0	0	0
Mobile Home	0.0	0	0	0	0.0	0	0	0	0.0	0	0	0
Schools	0.0	0	0	0	0.0	0	0	0	0.0	0	0	0
Churches	1.0	3	5	11	0.0	0	0	0	0.0	0	0	0
Hospitals	0.0	0	0	0	0.0	0	0	0	0.0	0	0	0
Total Incompatible	32.0	399	247	1,443	0.0	0	0	0	0.0	0	0	0

Note: Parcels and dwelling units may not match for single family land uses due to subdivision.
Parcels for multifamily land uses reflect only the common area parcel, except for condominiums.

Report Date: 11/04/2022

LOS ANGELES INTERNATIONAL AIRPORT

Incompatible Land Use

Annual Noise Impact Accumulated by Noise Zone: CNEL 65, 70, and 75 +

3Q22	Total Cumulative Noise Impact Areas - Del Aire											
	<i>CNEL 65 dB and Above</i>				<i>CNEL 70 dB and Above</i>				<i>CNEL 75 dB and Above</i>			
	Land Use	Acres	Dwelling Units	Parcels	Population	Acres	Dwelling Units	Parcels	Population	Acres	Dwelling Units	Parcels
Single Family	0.0	0	0	0	0.0	0	0	0	0.0	0	0	0
Multi-Family	0.0	0	0	0	0.0	0	0	0	0.0	0	0	0
Mobile Home	0.0	0	0	0	0.0	0	0	0	0.0	0	0	0
Schools	0.0	0	0	0	0.0	0	0	0	0.0	0	0	0
Churches	0.0	0	0	0	0.0	0	0	0	0.0	0	0	0
Hospitals	0.0	0	0	0	0.0	0	0	0	0.0	0	0	0
Total Incompatible	0.0	0	0	0	0.0	0	0	0	0.0	0	0	0

Note: Parcels and dwelling units may not match for single family land uses due to subdivision.
 Parcels for multifamily land uses reflect only the common area parcel, except for condominiums.

Report Date: 11/04/2022

LOS ANGELES INTERNATIONAL AIRPORT

Incompatible Land Use

Annual Noise Impact Accumulated by Noise Zone: CNEL 65, 70, and 75 +

3Q22	Total Cumulative Noise Impact Areas - City of El Segundo											
	<i>CNEL 65 dB and Above</i>				<i>CNEL 70 dB and Above</i>				<i>CNEL 75 dB and Above</i>			
	Land Use	Acres	Dwelling Units	Parcels	Population	Acres	Dwelling Units	Parcels	Population	Acres	Dwelling Units	Parcels
Single Family	57.4	375	377	983	3.1	19	19	44	0.0	0	0	0
Multi-Family	14.9	411	161	919	4.9	186	86	408	0.0	0	0	0
Mobile Home	0.0	0	0	0	0.0	0	0	0	0.0	0	0	0
Schools	0.0	0	0	0	0.0	0	0	0	0.0	0	0	0
Churches	0.7	0	2	0	0.0	0	0	0	0.0	0	0	0
Hospitals	0.0	0	0	0	0.0	0	0	0	0.0	0	0	0
Total Incompatible	73.0	786	540	1,903	8.0	205	105	453	0.0	0	0	0

Note: Parcels and dwelling units may not match for single family land uses due to subdivision.
Parcels for multifamily land uses reflect only the common area parcel, except for condominiums.

Report Date: 11/04/2022

LOS ANGELES INTERNATIONAL AIRPORT

Incompatible Land Use

Annual Noise Impact Accumulated by Noise Zone: CNEL 65, 70, and 75 +

3Q22	Total Cumulative Noise Impact Areas - City of Inglewood											
	<i>CNEL 65 dB and Above</i>				<i>CNEL 70 dB and Above</i>				<i>CNEL 75 dB and Above</i>			
	Land Use	Acres	Dwelling Units	Parcels	Population	Acres	Dwelling Units	Parcels	Population	Acres	Dwelling Units	Parcels
Single Family	59.2	411	419	1,673	0.8	6	6	26	0.0	0	0	0
Multi-Family	85.6	1,968	463	7,761	2.6	82	12	381	0.0	0	0	0
Mobile Home	0.6	0	2	0	0.0	0	0	0	0.0	0	0	0
Schools	0.0	0	0	0	0.0	0	0	0	0.0	0	0	0
Churches	8.0	6	13	13	2.1	0	1	0	0.0	0	0	0
Hospitals	0.0	0	0	0	0.0	0	0	0	0.0	0	0	0
Total Incompatible	153.4	2,385	897	9,447	5.5	88	19	406	0.0	0	0	0

Note: Parcels and dwelling units may not match for single family land uses due to subdivision.
Parcels for multifamily land uses reflect only the common area parcel, except for condominiums.

Report Date: 11/04/2022

LOS ANGELES INTERNATIONAL AIRPORT

Incompatible Land Use

Annual Noise Impact Accumulated by Noise Zone: CNEL 65, 70, and 75 +

3Q22	Total Cumulative Noise Impact Areas - Lennox											
	<i>CNEL 65 dB and Above</i>				<i>CNEL 70 dB and Above</i>				<i>CNEL 75 dB and Above</i>			
	Land Use	Acres	Dwelling Units	Parcels	Population	Acres	Dwelling Units	Parcels	Population	Acres	Dwelling Units	Parcels
Single Family	50.3	346	351	1,659	28.6	187	190	903	0.0	0	0	0
Multi-Family	46.2	691	270	3,260	26.6	354	139	1,733	0.0	0	0	0
Mobile Home	0.0	0	0	0	0.0	0	0	0	0.0	0	0	0
Schools	5.0	0	23	0	3.0	0	17	0	0.0	0	0	0
Churches	1.6	1	3	4	0.3	0	1	0	0.0	0	0	0
Hospitals	0.0	0	0	0	0.0	0	0	0	0.0	0	0	0
Total Incompatible	103.1	1,038	647	4,924	58.5	541	347	2,635	0.0	0	0	0

Note: Parcels and dwelling units may not match for single family land uses due to subdivision.
Parcels for multifamily land uses reflect only the common area parcel, except for condominiums.

Report Date: 11/04/2022

LOS ANGELES INTERNATIONAL AIRPORT

Incompatible Land Use

Annual Noise Impact Accumulated by Noise Zone: CNEL 65, 70, and 75 +

3Q22	Total Cumulative Noise Impact Areas - South and South East LA											
	<i>CNEL 65 dB and Above</i>				<i>CNEL 70 dB and Above</i>				<i>CNEL 75 dB and Above</i>			
	Land Use	Acres	Dwelling Units	Parcels	Population	Acres	Dwelling Units	Parcels	Population	Acres	Dwelling Units	Parcels
Single Family	0.0	0	0	0	0.0	0	0	0	0.0	0	0	0
Multi-Family	0.0	0	0	0	0.0	0	0	0	0.0	0	0	0
Mobile Home	0.0	0	0	0	0.0	0	0	0	0.0	0	0	0
Schools	0.0	0	0	0	0.0	0	0	0	0.0	0	0	0
Churches	2.4	1	6	4	0.0	0	0	0	0.0	0	0	0
Hospitals	0.0	0	0	0	0.0	0	0	0	0.0	0	0	0
Total Incompatible	2.4	1	6	4	0.0	0	0	0	0.0	0	0	0

Note: Parcels and dwelling units may not match for single family land uses due to subdivision.
 Parcels for multifamily land uses reflect only the common area parcel, except for condominiums.

Report Date: 11/04/2022

LOS ANGELES INTERNATIONAL AIRPORT

Incompatible Land Use

Annual Noise Impact Accumulated by Noise Zone: CNEL 65, 70, and 75 +

3Q22	Total Cumulative Noise Impact Areas - Westchester/Playa Del Rey											
	<i>CNEL 65 dB and Above</i>				<i>CNEL 70 dB and Above</i>				<i>CNEL 75 dB and Above</i>			
	Land Use	Acres	Dwelling Units	Parcels	Population	Acres	Dwelling Units	Parcels	Population	Acres	Dwelling Units	Parcels
Single Family	0.0	0	0	0	0.0	0	0	0	0.0	0	0	0
Multi-Family	0.0	0	0	0	0.0	0	0	0	0.0	0	0	0
Mobile Home	0.0	0	0	0	0.0	0	0	0	0.0	0	0	0
Schools	0.0	0	0	0	0.0	0	0	0	0.0	0	0	0
Churches	1.3	1	1	2	0.0	0	0	0	0.0	0	0	0
Hospitals	0.0	0	0	0	0.0	0	0	0	0.0	0	0	0
Total Incompatible	1.3	1	1	2	0.0	0	0	0	0.0	0	0	0

Note: Parcels and dwelling units may not match for single family land uses due to subdivision.
Parcels for multifamily land uses reflect only the common area parcel, except for condominiums.

Report Date: 11/04/2022



July	PDR1	PDR2	ESG1	ESG2	ESG3	ESG5	DEL1	WCH2	WCH3	WCH5	WCH6	ING1	ING2	ING3	ING6	ING8	LNX1	LNX2	LNX3	LNX4	ATH2	SLA1	SLA3	SLA5	SLA7
1 Fri	68	61	64	68	61			58	57	73	62	60	66	66	68	61	75	66	63	65	67	65	61	67	64
2 Sat	68	61	65	67	60			57	57	72	62	60	69	66	67	60	74	67	62	65	69	68	60	64	65
3 Sun	67	60	64	68	60			56	57	73	62	62	66	66	68	61	74	65	68	66	68	67	64	69	64
4 Mon	69	61	64	68	60			59	61	73	62	63	62	63	70	63	70	66	57	69	64	62	62	63	62
5 Tue	67	61	64	67	61			57	58	73	63	59	65	66	68	60	74	63	62	65	66	64	62	65	67
6 Wed	69	62	64	67	60			59	59	73	62	59	66	66	69	60	74	61	66	64	70	65	62	65	64
7 Thu	67	61	64	67	61			57	55	73	63	59	66	66	68	59	74	61	62	64	66	65	61	63	64
8 Fri	67	59	62	66	60			58	55	73	62	59	65	66	68	61	73	61	60	63	66	64	61	63	63
9 Sat	68	61	61	65	58			59	58	74	63	62	66	67	69	61	74	63	61	64	67	65	62	63	64
10 Sun	68	61	63	67	60			59	59	73	63	61	66	66	68	59	74	60	61	64	68	64	61	63	64
11 Mon	68	61	61	66	59			61	58	74	63	61	66	67	70	60	76	63	63	66	67	65	62	65	65
12 Tue	68	61	62	67	60			58	54	73	63	60	66	66	70	62	75	64	62	66	66	64	63	65	65
13 Wed	68	61	62	67	60			58	59	73	62	60	65	67	71	62	76	64	63	67	67	65	63	65	65
14 Thu	68	62	64	68	61			58	57	73	62	59	65	66	67	60	74	61	61	64	67	64	61	64	64
15 Fri	69	62	60	66	60			59	57	74	63	60	67	67	69	63	75	66	62	65	69	66	62	65	65
16 Sat	68	60	63	66	58	--		57	54	74	62	59	66	67	68	61	73	67	62	63	65	65	62	63	63
17 Sun	68	62	63	66	59	--		57	55	--	--	60	66	66	68	60	74	61	62	63	67	64	61	64	63
18 Mon	67	62	64	68	61	--		58	56	--	--	59	66	66	67	58	73	60	60	63	64	64	61	62	63
19 Tue	67	61	63	67	61	54		58	59		66	60	67	68	69	61	74	63	62	64	65	65	61	63	63
20 Wed	67	61	63	67	60	54		57	56	72	62	59	65	66	68	59	73	63	61	63	64	64	60	62	63
21 Thu	68	62	63	67	60	55		58	60	74	65	62	66	66	69	61	75	68	65	66	65	65	62	64	63
22 Fri	67	59	64	68	62	54		58	55	73	62	59	65	66	67	60	73	60	62	63	66	64	60	63	63
23 Sat	67	60	63	67	59	53		57	53	73	62	60	65	67	68	60	73	60	60	63	65	64	60	63	64
24 Sun	67	60	63	67	60	54		55	54	73	62	59	65	66	68	59	74	60	60	64	66	64	60	63	63
25 Mon	67	61	63	67	61	54		58	57	73	62	60	65	66	68	58	74	63	62	64	64	64	61	63	63
26 Tue	68	61	62	66	59	--		58	57	74	63	61	67	68	70	61	76	63	63	66	66	65	63	65	64
27 Wed	67	61	64	67	60	54		59	58	73	62	59	65	66	68	59	73	61	60	63	64	64	60	62	63
28 Thu	68	62	64	68	61	56		58	59	73	62	60	66		67	58	73	60	60	63	65	64	61	63	63
29 Fri	68	62	64	67	61	55		58	59	73	62	61	65	--	68	63	74	61	61	63	65	65	60	64	64
30 Sat	67	62	64	67	59	55		58	56	72	61	58	65	--	69	59	74	60	63	63	65	63	61	64	58
31 Sun	67	61	64	67	62	56		57	55	73	62	59	65	--	68	59	74	61	60	64	65	64	61	64	64



August	PDR1	PDR2	ESG1	ESG2	ESG3	ESG5	DEL1	WCH2	WCH3	WCH5	WCH6	ING1	ING2	ING3	ING6	ING8	LNX1	LNX2	LNX3	LNX4	ATH2	SLA1	SLA3	SLA5	SLA7
1 Mon	68	62	63	67	60	57		59	57	73	62	59	65	--	67	59	73	61	60	63	65	64	60	63	63
2 Tue	66	60	64	67	61	55		58	62	73	62	59	65	--	68	60	74	60	61	64	65	64	61	64	63
3 Wed	67	61	63	67	60	55		58	58	72	61	58	64	67	67	60	73	60	60	63	65	63	60	63	63
4 Thu	68	62	64	67	61	56		58	58	72	62	59	65	66	68	60	73	60	61	64	65	64	61	63	63
5 Fri	68	61	66	67	60	53		61	59	73	62	59	65	66	71	62	74	61	63	64	65	65	61	63	64
6 Sat	67	62	65	67	61	58		60	60	73	62	59	65	65	68	61	75	63	62	65	65	63	61	63	63
7 Sun	68	62	64	67	60	55		60	61	73	62	59	65	66	68	59	74	60	60	63	65	64	60	64	63
8 Mon	69	63	62	66		53		60	60	74	63	60	66	67	69	61	75	62	61	65	66	65	62	65	65
9 Tue	69	62	63	66		56		60	59	73	63	61	66	66	69	60	76	62	62	66	67	64	62	65	65
10 Wed	68	62	63	66	56	54		60	60	72	62	59	65	66	70	60	77	64	62	66	66	64	62	65	65
11 Thu	68	61	63	67	61	56		62	61	73	62	59	65	66	68	58	73	60	61	63	64	63	61	63	63
12 Fri	68	61	63	66	60	53		62	62	73	63	60	66	67	69	62	74	62	63	64	65	66	61	63	64
13 Sat	67	60	63	67	60	57		59	58	72	61	58	64	65	67	60	73	59	60	62	66	63	59	63	62
14 Sun	68	62	62	66	60	57		59	59	73	62	58	65	66	67	58	73	60	60	63	65	64	60	63	63
15 Mon	67	62	63	66	59	57		60	60	72	62	59	65	65	67	58	73	61	60	63	65	63	60	62	63
16 Tue	66	60	63	67	60	56		57	57	73	62	59	65	66	67	60	73	60	60	63	64	63	60	63	63
17 Wed	67	62	64	68	61	56		58	58	72	62	59	65	66	67	59	73	61	60	64	64	64	60	62	63
18 Thu	67	61	62	66	60	55		57	55	73	63	60	66	66	70	61	74	64	61	64	66	65	62	64	64
19 Fri	68	61	63	67	61	55		59	59	72	61	60	65	66	68	63	73	60	59	63	65	64	61	63	63
20 Sat	67	61	63	67	59	51		60	57	72	61	57	64	65	67	59	73	58	61	63	65	63	60	63	63
21 Sun	67	60	63	67	59	52		58	57	73	62	59	66	67	68	59	74	60	60	64	65	64	61	63	63
22 Mon	67	61	63	66	59	53		59	56	73	62	60	66	66	70	62	76	63	63	66	67	64	62	65	65
23 Tue	67	61	62	67	59	47		57	54	71	61	60	64	66	69	61	76	61	62	66	67	64	62	65	65
24 Wed	68	62	62	66	58	45		58	56	72	61	59	65	66	69	61	76	62	62	66	67	64	62	65	65
25 Thu	66	60	62	66	60	49		57	55	73	62	59	65	65	67	59	74	61	61	64	65	64	60	63	63
26 Fri	67	61	62	66	61	53		58	57	74	63	60	66	68	70	64	76	65	63	66	67	65	63	65	66
27 Sat	67	61	63	68	60	56		57	54	72	62	58	65	65	68	59	73	60	60	64	64	63	66	63	63
28 Sun	68	62	62	66	60	55		59	58	73	62	59	66	66	68	60	74	60	61	64	65	65	62	63	64
29 Mon	67	62	63	67	60	54		60	60	73	62	59	66	66	69	61	74	62	61	64	66	64	61	63	64
30 Tue	67	61	64	68	61	56		62	60	72	61	60	65	66	68	59	73	60	62	64	64	63	60	63	63
31 Wed	68	62	64	67	64	62		63	63	72	63	60	65	65	68	59	74	63	62	64	64	63	61	62	63



September	PDR1	PDR2	ESG1	ESG2	ESG3	ESG5	DEL1	WCH2	WCH3	WCH5	WCH6	ING1	ING2	ING3	ING6	ING8	LNX1	LNX2	LNX3	LNX4	ATH2	SLA1	SLA3	SLA5	SLA7
1 Thu	67	61	64	67	63	59		62	61	72	61	58	64	64	67	58	74	60	60	63	64	63	61	63	63
2 Fri	67	61	64	67	63	56		63	61	72	61	58	64	65	69	61	73	60	60	63	65	63	61	62	63
3 Sat	67	60	63	66	60	59		60	61	71	60	57	64	64	67	63	72	61	65	63	64	61	61	62	62
4 Sun	67	60	62	66	60	59		60	59	72	60	57	65	66	67	58	73	58	60	62	64	63	60	62	62
5 Mon	66	60	62	66	58	54		59	59	72	61	57	64	65	66	57	72	58	59	62	63	63	59	61	62
6 Tue	66	61	62	66	59	53		58	56	72	62	59	64	65	67	59	73	60	60	63	64	63	59	62	62
7 Wed	66	60	63	66	60	56		59	60	71	61	58	64	64	68	58	73	62	60	63	64	62	60	62	62
8 Thu	66	61	63	66	62	60		60	62	73	62	59	64	65	69	59	73	63	60	63	64	63	59	62	63
9 Fri	65	58	61	64	59	55		61	65	71	67	62	64	63	65	62	71	68	65	65	60	59	63	60	58
10 Sat	66	60	63	67	58	56		59	56	71	60	56	63	64	68	58	73	59	59	63	64	62	61	62	63
11 Sun	68	60	63	67	59	54		57	57	73	62	58	65	66	68	60	75	61	60	64	65	65	61	63	63
12 Mon	66	61	63	66	60	56		58	59	73	62	58	65	65	67	58	73	61	61	63	65	63	60	63	63
13 Tue	66	60	62	67	59	55		58	58	72	62	58	65	65	66	59	72	60	59	62	64	63	59	61	62
14 Wed	67	60	63	67	58	51		62	61	72	62	58	65	65	67	59	73	60	60	63	65	64	60	63	63
15 Thu	67	61	63	67	61	56		61	59	73	62	59	65	66	68	59	73	59	60	63	65	64	61	63	64
16 Fri	67	60	64	68	61	54		62	60	73	62	60	65	66	68	63	74	60	62	63	66	65	61	64	64
17 Sat	68	61	63	66	59	52		62	58	72	61	59	64	65	67	61	73	61	60	63	65	63	61	63	64
18 Sun	67	61	63	67	59	52		59	59	73	62	59	65	66	69	59	74	60	61	64	66	64	61	63	65
19 Mon	68	62	63	67	60	55		62	62	73	63	60	66	66	69	60	75	64	62	65	66	64	62	65	65
20 Tue	68	62	63	67	61	56		59	58	73	63	59	65	66	69	61	75	62	61	65	66	64	62	64	65
21 Wed	68	61	63	67	60	57		59	62	72	62	59	64	66	70	61	75	62	61	66	66	64	62	65	65
22 Thu	67	61	63	66	60	57		62	60	73	62	59	65	66	68	60	74	60	61	64	65	64	61	63	63
23 Fri	67	61	63	66	60	54		61	63	73	62	60	66	66	68	62	74	61	61	64	64	63	60	62	63
24 Sat	66	59	63	66	59	54		58	60	72	61	58	64	65	68	62	74	64	60	63	67	63	61	62	62
25 Sun	66	60	63	66	59	53		59	58	73	62	59	65	66	68	59	74	59	60	63	68	64	60	62	62
26 Mon	66	61	63	67	59	51		61	60	72	62	59	65	65	67	59	73	60	61	63	66	64	62	65	63
27 Tue	66	59	63	67	59	54		62	60	72	61	58	64	65	67	59	73	59	59	64	64	63	60	64	62
28 Wed	67	61	63	67	59	55		62	60	72	61	58	64	65	67	60	73	60	60	63	64	63	59	62	62
29 Thu	67	61	62	66	60	55		59	59	72	61	59	65	66	68	60	74	62	61	64	66	64	62	64	68
30 Fri	67	61	63	67	63	53		59	58	73	62	59	65	66	68	61	73	60	60	63	65	63	61	63	64



Runway Utilization Report
Summary of Runway Use (Average)
 Los Angeles International Airport

Period : 07/01/2022 to 09/30/2022
 Airline : ALL
 Aircraft : ALL

Time Period	Percent Daily Operations Per Runway								Average Operations	Runway Complex		Runway Flow		In Board	Out Board	
	06L	06R	07L	07R	24L	24R	25L	25R		South	North	West	East			
Departures																
Total Hours																
24 Hours	0%	<1%	<1%	<1%	38%	<1%	4%	57%	779	61%	39%	99%	<1 %	96%	4%	
CNEL Hours																
0700 - 1900	0%	<1%	<1%	<1%	43%	<1%	5%	51%	523	56%	44%	99%	<1 %	95%	5%	
1900 - 2200	0%	<1%	<1%	0%	43%	0%	4%	51%	97	56%	44%	99%	1%	96%	4%	
2200 - 0700	0%	<1%	<1%	0%	20%	<1%	2%	77%	160	80%	20%	99%	<1 %	98%	2%	
Contra Hours																
Midnight - 0630	0%	<1%	<1%	0%	9%	<1%	4%	86%	85	90%	10%	100%	<1 %	96%	4%	
0630 - Midnight	0%	<1%	<1%	<1%	42%	<1%	4%	53%	695	57%	43%	99%	<1 %	96%	4%	
Arrivals																
Total Hours																
24 Hours	<1%	4%	<1%	<1%	<1%	44%	49%	<1%	779	50%	50%	95%	5%	6%	94%	
CNEL Hours																
0700 - 1900	<1%	<1%	<1%	<1%	<1%	47%	51%	1%	510	52%	48%	99%	<1 %	2%	98%	
1900 - 2200	<1%	0%	0%	<1%	<1%	47%	51%	<1%	136	52%	48%	99%	1%	<1%	99%	
2200 - 0700	3%	23%	<1%	<1%	<1%	30%	40%	<1%	134	43%	57%	72%	28%	26%	74%	
Contra Hours																
Midnight - 0630	8%	66%	2%	<1%	2%	6%	14%	2%	47	18%	82%	24%	76%	72%	28%	
0630 - Midnight	<1%	<1%	<1%	<1%	<1%	47%	51%	<1%	732	53%	47%	99%	<1 %	1%	99%	

All values are rounded to the nearest whole number.



Runway Utilization Report
 Summary of Runway Flow (Average)
 Los Angeles International Airport

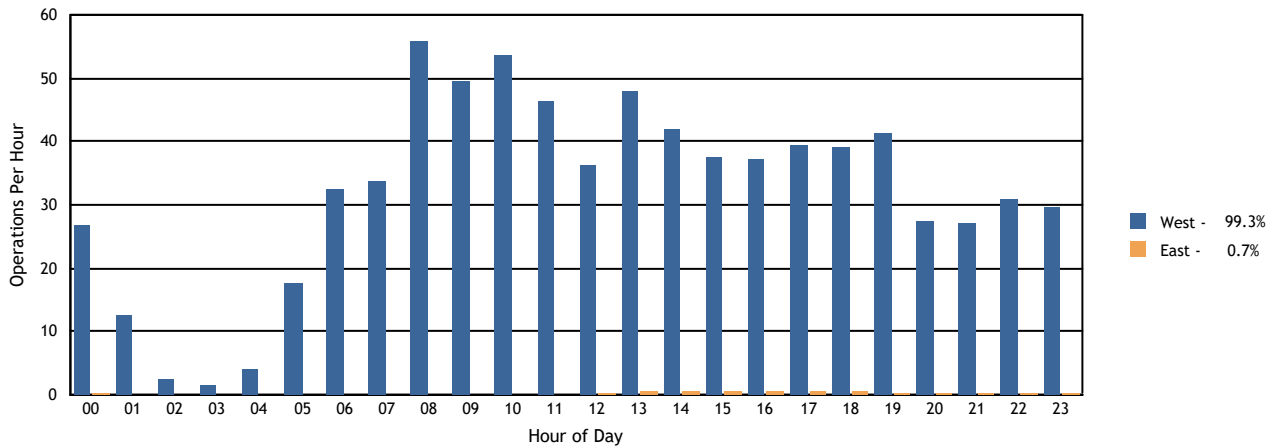
Period: 07/01/2022 to 09/30/2022

Airline : ALL
 Aircraft : ALL

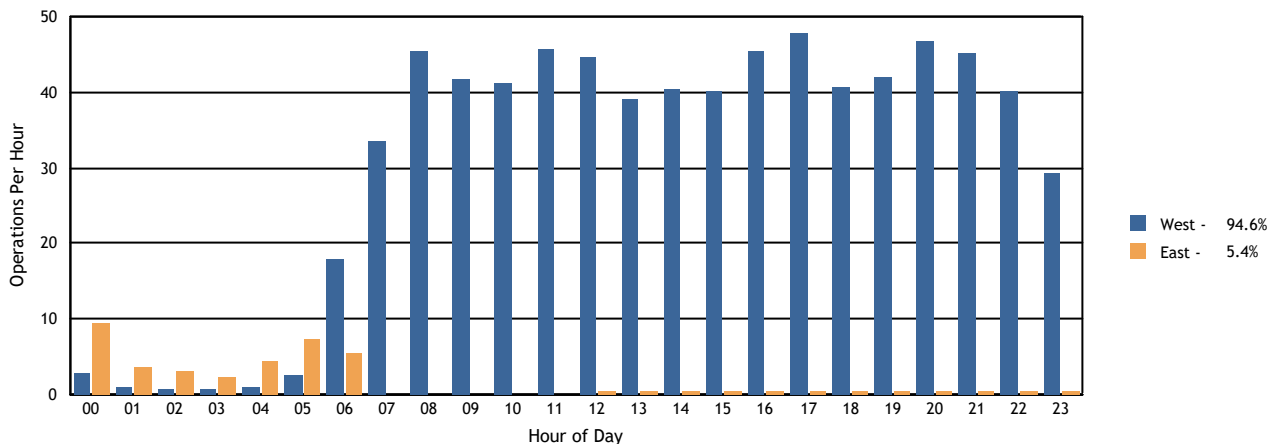
Time Period	Departures			Arrivals			Departures		Arrivals	
	West	East	Average	West	East	Average	West	East	West	East
Total Hours										
24 Hours	774	5	779	737	42	779	99%	<1%	95%	5%
CNEL Hours										
0700-1900	519	3	523	506	3	510	99%	<1%	99%	<1%
1900-2200	96	1	97	134	1	136	99%	1%	99%	1%
2200-0700	159	<1	160	97	37	134	99%	<1%	72%	28%
Contra Hours										
Midnight - 0630	84	<1	85	11	36	47	100%	<1%	24%	76%
0630 - Midnight	690	5	695	726	6	732	99%	<1%	99%	<1%

All percentages are rounded to the nearest whole number.

Departures Per Hour by Operational Direction



Arrivals Per Hour by Operational Direction



LAX Average Daily Runway Use By Aircraft Type - 24 Hours Third Quarter 2022

Arrivals (Average Daily Operations)								
Aircraft Type	06L	06R	07L	07R	24L	24R	25L	25R
A19N	0.00	0.00	0.00	0.00	0.00	0.00	0.01	0.00
A20N	0.07	0.13	0.00	0.14	0.08	3.11	17.48	0.18
A21N	0.26	1.73	0.00	0.16	0.12	8.73	20.87	0.41
A306	0.00	0.32	0.00	0.00	0.01	0.00	0.58	0.04
A319	0.09	0.35	0.00	0.10	0.02	4.80	10.17	0.14
A320	0.40	0.75	0.00	0.28	0.16	20.71	43.18	0.82
A321	0.64	2.97	0.00	0.48	0.20	20.11	50.80	0.98
A332	0.11	0.88	0.01	0.02	0.07	4.29	2.93	0.02
A333	0.04	0.10	0.00	0.01	0.01	1.02	1.95	0.00
A343	0.01	0.01	0.00	0.01	0.00	0.42	0.46	0.00
A345	0.00	0.00	0.00	0.00	0.00	0.01	0.00	0.00
A359	0.12	0.33	0.00	0.01	0.08	7.02	3.35	0.07
A35K	0.02	0.00	0.00	0.02	0.02	2.91	1.09	0.01
A388	0.01	0.00	0.00	0.00	0.02	1.89	0.01	0.00
ASTR	0.00	0.00	0.00	0.00	0.00	0.02	0.01	0.00
B350	0.02	0.03	0.00	0.00	0.04	1.67	0.75	0.01
B38M	0.14	0.39	0.00	0.09	0.27	12.99	5.57	0.11
B39M	0.09	1.14	0.00	0.10	0.02	3.95	8.79	0.17
B732	0.00	0.01	0.00	0.00	0.00	0.00	0.01	0.00
B733	0.00	0.00	0.00	0.00	0.00	0.00	0.01	0.00
B734	0.00	0.00	0.00	0.00	0.00	0.01	0.03	0.00
B737	0.45	1.87	0.01	0.09	0.73	36.51	5.99	0.10
B738	0.67	2.79	0.01	0.27	0.45	32.99	31.73	0.58
B739	0.49	2.62	0.00	0.17	0.43	26.04	26.96	0.61
B744	0.24	1.34	0.10	0.11	0.01	0.29	7.85	0.16
B748	0.08	0.88	0.00	0.07	0.03	2.00	2.80	0.00
B752	0.28	2.28	0.12	0.14	0.21	9.45	8.87	0.15
B753	0.03	0.10	0.00	0.02	0.04	3.25	4.59	0.12
B762	0.10	0.39	0.00	0.01	0.00	0.12	1.35	0.14
B763	0.28	4.11	0.43	0.29	0.09	6.18	13.20	0.40
B764	0.02	0.07	0.00	0.01	0.01	0.24	0.08	0.00
B772	0.15	0.83	0.01	0.04	0.03	2.70	7.48	0.08
B77L	0.21	2.29	0.13	0.09	0.05	0.71	9.34	0.21
B77W	0.11	0.02	0.00	0.05	0.13	17.02	6.91	0.08
B788	0.01	0.04	0.00	0.02	0.04	1.65	4.12	0.05
B789	0.11	1.26	0.00	0.03	0.10	7.53	7.15	0.11
B78X	0.00	0.01	0.00	0.03	0.01	0.79	2.96	0.03
BCS1	0.07	0.00	0.00	0.02	0.10	7.29	0.53	0.00
BCS3	0.00	0.00	0.00	0.02	0.05	4.76	2.49	0.04
BE20	0.00	0.00	0.00	0.00	0.01	0.07	0.11	0.00

Departures (Average Daily Operations)								
Aircraft Type	06L	06R	07L	07R	24L	24R	25L	25R
A19N	0.00	0.00	0.00	0.00	0.00	0.00	0.00	0.01
A20N	0.00	0.09	0.04	0.00	2.95	0.00	0.15	18.02
A21N	0.00	0.04	0.12	0.00	4.92	0.07	0.35	26.70
A306	0.00	0.00	0.01	0.00	0.00	0.00	0.22	0.72
A319	0.00	0.02	0.09	0.00	6.33	0.09	0.12	8.97
A320	0.00	0.18	0.28	0.00	16.75	0.04	0.50	48.59
A321	0.00	0.28	0.24	0.00	15.92	0.05	0.68	58.92
A332	0.00	0.00	0.04	0.00	5.62	0.04	0.41	2.25
A333	0.00	0.00	0.01	0.00	1.12	0.00	0.03	1.95
A343	0.00	0.00	0.01	0.00	0.71	0.00	0.03	0.17
A345	0.00	0.00	0.00	0.00	0.00	0.00	0.01	0.00
A359	0.00	0.03	0.09	0.00	6.42	0.03	0.02	4.38
A35K	0.00	0.01	0.02	0.00	1.72	0.00	0.02	2.33
A388	0.00	0.00	0.00	0.02	1.50	0.00	0.40	0.00
ASTR	0.00	0.00	0.00	0.00	0.01	0.00	0.00	0.01
B350	0.00	0.00	0.00	0.00	0.29	0.00	0.49	1.71
B38M	0.00	0.07	0.09	0.00	12.83	0.09	0.12	6.33
B39M	0.00	0.05	0.04	0.00	2.09	0.02	0.15	11.92
B732	0.00	0.00	0.00	0.00	0.00	0.00	0.00	0.02
B733	0.00	0.00	0.00	0.00	0.00	0.00	0.00	0.01
B734	0.00	0.00	0.00	0.00	0.00	0.00	0.02	0.02
B737	0.00	0.17	0.10	0.00	40.21	0.27	0.23	4.79
B738	0.00	0.27	0.21	0.00	36.01	0.27	0.64	32.26
B739	0.00	0.09	0.20	0.00	26.26	0.20	0.33	30.27
B744	0.00	0.01	0.07	0.00	0.01	0.00	2.85	7.21
B748	0.00	0.02	0.00	0.00	1.95	0.00	3.66	0.23
B752	0.00	0.08	0.08	0.00	13.72	0.13	0.32	7.12
B753	0.00	0.03	0.02	0.00	2.63	0.03	0.07	5.39
B762	0.00	0.00	0.01	0.00	0.01	0.00	0.51	1.57
B763	0.00	0.04	0.08	0.00	8.48	0.04	2.72	13.57
B764	0.00	0.01	0.00	0.00	0.20	0.02	0.00	0.17
B772	0.00	0.03	0.07	0.00	3.30	0.00	0.09	7.86
B77L	0.00	0.05	0.08	0.00	0.01	0.00	4.36	8.51
B77W	0.00	0.07	0.14	0.00	11.93	0.02	0.16	12.07
B788	0.00	0.00	0.04	0.00	3.27	0.01	0.04	2.58
B789	0.00	0.05	0.11	0.00	6.15	0.03	0.03	9.99
B78X	0.00	0.02	0.00	0.00	0.60	0.00	0.01	3.25
BCS1	0.00	0.03	0.04	0.00	7.77	0.00	0.02	0.15
BCS3	0.00	0.00	0.02	0.00	4.65	0.03	0.01	2.68
BE20	0.00	0.00	0.00	0.00	0.03	0.00	0.03	0.13

LAX Noise Management

Source: LAX ANOMS, based on available FAA radar flight track data.

Note: Aircraft Type for certain military operations may not be available through our data source, therefore will not be included in the report.

LAX Average Daily Runway Use By Aircraft Type - 24 Hours Third Quarter 2022

Arrivals (Average Daily Operations)								
Aircraft Type	06L	06R	07L	07R	24L	24R	25L	25R
BE36	0.00	0.00	0.00	0.00	0.00	0.00	0.01	0.00
BE40	0.00	0.00	0.00	0.01	0.00	0.09	0.25	0.00
BE58	0.00	0.00	0.00	0.00	0.00	0.03	0.01	0.00
BE99	0.01	0.00	0.00	0.00	0.00	0.52	0.15	0.00
BE9L	0.00	0.00	0.00	0.00	0.00	0.01	0.01	0.00
C152	0.00	0.01	0.00	0.00	0.00	0.00	0.00	0.00
C172	0.00	0.00	0.00	0.00	0.00	0.00	0.01	0.00
C182	0.00	0.00	0.00	0.00	0.00	0.01	0.00	0.00
C208	0.00	0.00	0.00	0.02	0.00	0.03	2.32	0.22
C25A	0.01	0.01	0.00	0.01	0.00	0.17	0.21	0.00
C25B	0.00	0.02	0.00	0.00	0.01	0.16	0.54	0.00
C25C	0.00	0.00	0.00	0.00	0.00	0.01	0.04	0.00
C500	0.00	0.00	0.00	0.00	0.00	0.00	0.01	0.00
C525	0.01	0.00	0.00	0.01	0.00	0.05	0.15	0.00
C550	0.00	0.00	0.00	0.00	0.00	0.03	0.00	0.00
C560	0.00	0.01	0.00	0.00	0.00	0.04	0.07	0.00
C56X	0.00	0.02	0.00	0.01	0.00	0.60	1.24	0.01
C650	0.00	0.00	0.00	0.01	0.00	0.00	0.00	0.00
C680	0.01	0.00	0.00	0.01	0.01	0.25	0.49	0.00
C68A	0.00	0.00	0.00	0.02	0.02	0.36	1.32	0.01
C700	0.00	0.02	0.00	0.01	0.00	0.25	0.53	0.00
C750	0.01	0.04	0.00	0.01	0.00	0.17	1.03	0.02
CL30	0.01	0.01	0.00	0.01	0.02	1.25	2.87	0.02
CL35	0.00	0.00	0.00	0.00	0.00	0.00	0.03	0.00
CL60	0.00	0.02	0.00	0.00	0.01	0.42	1.15	0.02
CRJ2	0.07	0.00	0.00	0.01	0.11	9.88	2.25	0.03
CRJ7	0.01	0.00	0.00	0.04	0.03	3.90	4.41	0.10
DC10	0.00	0.01	0.00	0.00	0.00	0.02	0.08	0.01
E135	0.01	0.00	0.00	0.00	0.00	0.29	1.36	0.00
E145	0.00	0.00	0.00	0.01	0.00	0.03	0.08	0.00
E170	0.39	0.15	0.00	0.18	0.49	49.84	25.23	0.65
E190	0.00	0.00	0.00	0.00	0.00	0.00	0.13	0.00
E35L	0.00	0.00	0.00	0.00	0.00	0.05	0.15	0.00
E50P	0.00	0.00	0.00	0.00	0.00	0.02	0.02	0.01
E545	0.00	0.00	0.00	0.00	0.01	0.13	0.39	0.00
E550	0.00	0.00	0.00	0.00	0.00	0.03	0.29	0.00
E55P	0.01	0.01	0.00	0.01	0.03	0.52	1.11	0.04
E75L	0.09	0.00	0.00	0.04	0.18	14.59	5.98	0.16
E75S	0.00	0.00	0.00	0.00	0.01	1.37	0.64	0.01
F2TH	0.00	0.03	0.00	0.01	0.00	0.17	0.60	0.03

Departures (Average Daily Operations)								
Aircraft Type	06L	06R	07L	07R	24L	24R	25L	25R
BE30	0.00	0.00	0.01	0.00	0.02	0.00	0.00	0.00
BE36	0.00	0.00	0.00	0.00	0.00	0.00	0.00	0.01
BE40	0.00	0.00	0.00	0.00	0.01	0.00	0.12	0.22
BE58	0.00	0.00	0.00	0.00	0.01	0.00	0.00	0.03
BE99	0.00	0.00	0.00	0.00	0.00	0.00	0.02	0.66
BE9L	0.00	0.00	0.00	0.00	0.00	0.00	0.00	0.02
C152	0.00	0.00	0.00	0.00	0.00	0.00	0.00	0.01
C17	0.00	0.00	0.00	0.00	0.02	0.00	0.00	0.00
C172	0.00	0.00	0.00	0.00	0.00	0.00	0.00	0.01
C182	0.00	0.00	0.00	0.00	0.00	0.00	0.00	0.01
C208	0.00	0.00	0.02	0.00	0.00	0.00	0.07	2.50
C25A	0.00	0.01	0.00	0.00	0.02	0.00	0.07	0.32
C25B	0.00	0.00	0.00	0.00	0.05	0.00	0.09	0.60
C25C	0.00	0.00	0.00	0.00	0.00	0.00	0.02	0.03
C500	0.00	0.00	0.00	0.00	0.00	0.00	0.00	0.01
C525	0.00	0.00	0.01	0.00	0.00	0.00	0.01	0.21
C550	0.00	0.00	0.00	0.00	0.01	0.00	0.00	0.02
C560	0.00	0.00	0.00	0.00	0.00	0.00	0.04	0.08
C56X	0.00	0.00	0.01	0.00	0.11	0.00	0.61	1.16
C650	0.00	0.00	0.00	0.00	0.00	0.00	0.00	0.01
C680	0.00	0.00	0.00	0.00	0.01	0.00	0.25	0.50
C68A	0.00	0.01	0.00	0.00	0.11	0.00	0.60	1.01
C700	0.00	0.01	0.00	0.00	0.04	0.00	0.29	0.46
C750	0.00	0.00	0.01	0.00	0.02	0.00	0.46	0.80
CL30	0.00	0.01	0.01	0.00	0.24	0.01	1.40	2.45
CL35	0.00	0.00	0.00	0.00	0.00	0.00	0.02	0.01
CL60	0.00	0.00	0.00	0.00	0.12	0.00	0.53	1.00
CRJ2	0.00	0.07	0.02	0.00	3.37	0.03	0.22	8.64
CRJ7	0.00	0.03	0.00	0.00	1.05	0.00	0.04	7.36
DC10	0.00	0.00	0.00	0.00	0.00	0.00	0.04	0.08
E135	0.00	0.02	0.00	0.00	0.00	0.00	0.46	1.18
E145	0.00	0.00	0.01	0.00	0.00	0.00	0.01	0.10
E170	0.00	0.29	0.25	0.00	26.77	0.16	0.30	49.23
E190	0.00	0.00	0.00	0.00	0.00	0.00	0.07	0.07
E35L	0.00	0.00	0.00	0.00	0.01	0.00	0.09	0.10
E50P	0.00	0.00	0.00	0.00	0.00	0.00	0.03	0.02
E545	0.00	0.00	0.00	0.00	0.03	0.00	0.12	0.38
E550	0.00	0.00	0.00	0.00	0.01	0.00	0.05	0.27
E55P	0.00	0.00	0.01	0.00	0.10	0.00	0.51	1.09
E75L	0.00	0.10	0.07	0.00	17.18	0.11	0.03	3.59

LAX Noise Management

Source: LAX ANOMS, based on available FAA radar flight track data.

Note: Aircraft Type for certain military operations may not be available through our data source, therefore will not be included in the report.

LAX Average Daily Runway Use By Aircraft Type - 24 Hours Third Quarter 2022

Arrivals (Average Daily Operations)								
Aircraft Type	06L	06R	07L	07R	24L	24R	25L	25R
F900	0.01	0.00	0.00	0.01	0.00	0.15	0.43	0.00
FA20	0.00	0.00	0.00	0.00	0.00	0.00	0.01	0.00
FA50	0.00	0.01	0.00	0.00	0.00	0.02	0.05	0.00
FA7X	0.00	0.00	0.00	0.01	0.00	0.10	0.22	0.02
FA8X	0.00	0.00	0.00	0.00	0.00	0.00	0.07	0.00
G150	0.00	0.00	0.00	0.00	0.00	0.00	0.05	0.01
G280	0.00	0.00	0.00	0.00	0.00	0.05	0.49	0.00
GA5C	0.00	0.01	0.00	0.00	0.00	0.01	0.04	0.00
GA6C	0.00	0.00	0.00	0.00	0.00	0.03	0.08	0.00
GALX	0.00	0.00	0.01	0.01	0.00	0.11	0.14	0.00
GL5T	0.00	0.01	0.00	0.00	0.01	0.16	0.32	0.00
GL7T	0.01	0.01	0.00	0.00	0.00	0.12	0.34	0.00
GLEX	0.00	0.01	0.00	0.00	0.00	0.46	1.41	0.02
GLF4	0.01	0.13	0.00	0.01	0.02	0.51	1.66	0.03
GLF5	0.00	0.12	0.02	0.02	0.00	0.41	1.55	0.01
GLF6	0.02	0.02	0.00	0.02	0.02	0.38	1.43	0.01
H25B	0.00	0.02	0.01	0.00	0.00	0.17	0.80	0.00
H25C	0.00	0.00	0.00	0.01	0.00	0.01	0.01	0.00
HA4T	0.00	0.00	0.00	0.00	0.00	0.00	0.01	0.00
HDJT	0.00	0.00	0.00	0.00	0.00	0.02	0.05	0.00
J328	0.01	0.01	0.00	0.00	0.00	0.00	0.01	0.00
LJ31	0.00	0.00	0.00	0.00	0.00	0.00	0.01	0.00
LJ35	0.00	0.00	0.00	0.00	0.00	0.01	0.09	0.00
LJ40	0.00	0.00	0.00	0.00	0.00	0.00	0.01	0.00
LJ45	0.00	0.01	0.00	0.02	0.00	0.20	0.34	0.00
LJ60	0.00	0.01	0.00	0.00	0.00	0.07	0.18	0.00
LJ75	0.00	0.00	0.00	0.00	0.00	0.00	0.03	0.00
MD11	0.09	0.67	0.02	0.03	0.00	0.08	2.63	0.07
PA46	0.00	0.00	0.00	0.00	0.00	0.03	0.00	0.00
PC12	0.03	0.05	0.02	0.01	0.04	0.98	0.70	0.05
PC24	0.00	0.00	0.00	0.00	0.00	0.00	0.01	0.00
PRM1	0.00	0.00	0.00	0.00	0.00	0.03	0.14	0.00
S22T	0.00	0.00	0.00	0.00	0.00	0.02	0.00	0.00
A346	0.01	0.00	0.00	0.00	0.00	0.50	0.47	0.00
SF50	0.00	0.00	0.00	0.00	0.00	0.05	0.01	0.00
DA40	0.00	0.00	0.00	0.00	0.00	0.01	0.00	0.00
C501	0.00	0.00	0.00	0.00	0.00	0.00	0.01	0.00
P210	0.00	0.00	0.00	0.00	0.00	0.02	0.00	0.00
C425	0.01	0.00	0.00	0.00	0.00	0.00	0.00	0.00
BE35	0.00	0.00	0.00	0.00	0.01	0.02	0.02	0.00

Departures (Average Daily Operations)								
Aircraft Type	06L	06R	07L	07R	24L	24R	25L	25R
E75S	0.00	0.00	0.00	0.00	2.00	0.00	0.00	0.03
F2TH	0.00	0.00	0.00	0.00	0.02	0.00	0.41	0.42
F900	0.00	0.01	0.00	0.00	0.07	0.00	0.13	0.40
FA20	0.00	0.00	0.00	0.00	0.00	0.00	0.01	0.00
FA50	0.00	0.00	0.00	0.00	0.00	0.00	0.02	0.07
FA7X	0.00	0.00	0.00	0.00	0.04	0.00	0.10	0.22
FA8X	0.00	0.00	0.00	0.00	0.00	0.00	0.02	0.05
G150	0.00	0.00	0.00	0.00	0.01	0.00	0.02	0.03
G280	0.00	0.01	0.00	0.00	0.02	0.00	0.17	0.34
GA5C	0.00	0.00	0.00	0.00	0.00	0.00	0.00	0.07
GA6C	0.00	0.00	0.00	0.00	0.02	0.00	0.04	0.05
GALX	0.00	0.01	0.00	0.00	0.01	0.00	0.08	0.17
GL5T	0.00	0.00	0.00	0.00	0.01	0.00	0.20	0.28
GL7T	0.00	0.00	0.00	0.00	0.04	0.00	0.16	0.27
GLEX	0.00	0.01	0.00	0.00	0.11	0.00	0.47	1.28
GLF4	0.00	0.00	0.02	0.00	0.09	0.00	0.78	1.47
GLF5	0.00	0.01	0.00	0.00	0.05	0.00	0.62	1.40
GLF6	0.00	0.02	0.01	0.00	0.07	0.01	0.59	1.13
H25B	0.00	0.00	0.00	0.00	0.03	0.00	0.38	0.63
H25C	0.00	0.01	0.00	0.00	0.01	0.00	0.00	0.01
HA4T	0.00	0.00	0.00	0.00	0.00	0.00	0.01	0.00
HDJT	0.00	0.00	0.00	0.00	0.00	0.00	0.03	0.04
J328	0.00	0.00	0.01	0.00	0.00	0.00	0.00	0.02
LJ31	0.00	0.00	0.00	0.00	0.00	0.00	0.00	0.01
LJ35	0.00	0.00	0.00	0.00	0.00	0.00	0.02	0.07
LJ40	0.00	0.00	0.00	0.00	0.00	0.00	0.00	0.01
LJ45	0.00	0.01	0.01	0.00	0.01	0.00	0.24	0.29
LJ60	0.00	0.00	0.00	0.00	0.01	0.01	0.08	0.16
LJ75	0.00	0.00	0.00	0.00	0.00	0.00	0.01	0.02
MD11	0.00	0.00	0.03	0.00	0.02	0.00	1.14	2.37
PA46	0.00	0.00	0.00	0.00	0.00	0.00	0.01	0.02
PC12	0.00	0.01	0.00	0.00	0.38	0.02	0.03	1.41
PC24	0.00	0.00	0.00	0.00	0.00	0.00	0.01	0.00
PRM1	0.00	0.00	0.00	0.00	0.01	0.00	0.03	0.13
S22T	0.00	0.00	0.00	0.00	0.00	0.00	0.00	0.02
A346	0.00	0.01	0.00	0.00	0.62	0.00	0.00	0.35
SF50	0.00	0.00	0.00	0.00	0.01	0.00	0.01	0.04
DA40	0.00	0.00	0.00	0.00	0.01	0.00	0.00	0.00
C501	0.00	0.00	0.00	0.00	0.00	0.00	0.00	0.01
P210	0.00	0.00	0.00	0.00	0.00	0.00	0.01	0.01

LAX Noise Management

Source: LAX ANOMS, based on available FAA radar flight track data.

Note: Aircraft Type for certain military operations may not be available through our data source, therefore will not be included in the report.

**LAX Average Daily Runway Use By Aircraft Type - 24 Hours
Third Quarter 2022**

Arrivals (Average Daily Operations)								
Aircraft Type	06L	06R	07L	07R	24L	24R	25L	25R
DA42	0.00	0.00	0.00	0.00	0.00	0.00	0.01	0.00
EPIC	0.00	0.00	0.00	0.00	0.00	0.00	0.04	0.00
FATH	0.00	0.00	0.00	0.00	0.00	0.01	0.00	0.00
SF34	0.00	0.00	0.00	0.00	0.00	0.07	0.02	0.00
AA5	0.00	0.00	0.00	0.00	0.00	0.01	0.00	0.00
T210	0.00	0.00	0.00	0.00	0.00	0.01	0.00	0.00
JS32	0.00	0.00	0.00	0.00	0.00	0.00	0.01	0.00
C340	0.00	0.00	0.00	0.00	0.00	0.00	0.02	0.00
BE33	0.00	0.00	0.00	0.00	0.00	0.00	0.01	0.00
M20P	0.00	0.00	0.00	0.00	0.00	0.00	0.01	0.00
PAY3	0.00	0.00	0.00	0.00	0.00	0.00	0.01	0.00
SW4	0.00	0.00	0.00	0.00	0.00	0.00	0.01	0.00

Departures (Average Daily Operations)								
Aircraft Type	06L	06R	07L	07R	24L	24R	25L	25R
C425	0.00	0.00	0.00	0.00	0.01	0.00	0.00	0.00
BE35	0.00	0.00	0.00	0.00	0.01	0.00	0.00	0.03
DA42	0.00	0.00	0.00	0.00	0.00	0.00	0.00	0.01
EPIC	0.00	0.00	0.00	0.00	0.00	0.00	0.03	0.01
FATH	0.00	0.00	0.00	0.00	0.00	0.00	0.00	0.01
SF34	0.00	0.00	0.00	0.00	0.02	0.00	0.00	0.02
PA18	0.00	0.00	0.00	0.00	0.00	0.00	0.00	0.01
T210	0.00	0.00	0.00	0.00	0.00	0.00	0.00	0.01
JS32	0.00	0.00	0.00	0.00	0.00	0.00	0.00	0.01
C340	0.00	0.00	0.00	0.00	0.00	0.00	0.00	0.02
BE33	0.00	0.00	0.00	0.00	0.00	0.00	0.00	0.01
M20P	0.00	0.00	0.00	0.00	0.00	0.00	0.00	0.01
PAY3	0.00	0.00	0.00	0.00	0.00	0.00	0.00	0.01

LAX Average Daily Runway Use By Aircraft Type - Night Time (10pm - 7am)
Third Quarter 2022

Arrivals (Average Daily Operations)								
Aircraft Type	06L	06R	07L	07R	24L	24R	25L	25R
A20N	0.02	0.13	0.00	0.02	0.01	0.46	3.80	0.01
A21N	0.20	1.73	0.00	0.01	0.04	2.97	3.87	0.09
A306	0.00	0.32	0.00	0.00	0.01	0.00	0.16	0.03
A319	0.08	0.35	0.00	0.01	0.00	0.48	1.60	0.00
A320	0.25	0.75	0.00	0.09	0.00	2.39	7.43	0.03
A321	0.58	2.97	0.00	0.08	0.08	2.86	7.40	0.07
A332	0.07	0.88	0.01	0.01	0.05	1.50	0.25	0.01
A333	0.03	0.10	0.00	0.01	0.00	0.24	0.53	0.00
A343	0.01	0.01	0.00	0.00	0.00	0.00	0.00	0.00
A359	0.02	0.33	0.00	0.00	0.00	0.40	0.21	0.01
A35K	0.01	0.00	0.00	0.00	0.00	0.42	0.02	0.00
A388	0.00	0.00	0.00	0.00	0.00	0.03	0.00	0.00
B350	0.01	0.02	0.00	0.00	0.01	0.14	0.07	0.01
B38M	0.07	0.39	0.00	0.02	0.08	3.99	1.13	0.00
B39M	0.08	1.14	0.00	0.03	0.00	0.86	2.71	0.03
B737	0.26	1.87	0.01	0.01	0.29	7.21	0.55	0.00
B738	0.49	2.78	0.00	0.03	0.14	4.29	4.79	0.04
B739	0.38	2.62	0.00	0.02	0.14	2.61	3.46	0.08
B744	0.24	1.34	0.10	0.05	0.01	0.11	1.87	0.12
B748	0.07	0.88	0.00	0.05	0.00	0.05	0.42	0.00
B752	0.21	2.27	0.12	0.03	0.17	1.74	1.50	0.02
B753	0.02	0.10	0.00	0.01	0.00	0.34	1.05	0.01
B762	0.10	0.39	0.00	0.01	0.00	0.07	0.63	0.07
B763	0.28	4.11	0.43	0.17	0.07	0.75	3.59	0.24
B764	0.02	0.07	0.00	0.00	0.01	0.08	0.01	0.00
B772	0.11	0.83	0.01	0.01	0.01	0.38	0.83	0.02
B77L	0.20	2.29	0.13	0.04	0.02	0.16	1.25	0.07
B77W	0.01	0.01	0.00	0.00	0.00	0.13	0.05	0.00
B788	0.00	0.04	0.00	0.00	0.00	0.00	0.03	0.00
B789	0.03	1.25	0.00	0.00	0.07	0.36	0.49	0.04
B78X	0.00	0.01	0.00	0.00	0.00	0.02	0.14	0.00
BCS1	0.01	0.00	0.00	0.00	0.02	0.52	0.03	0.00
BCS3	0.00	0.00	0.00	0.00	0.00	0.35	0.27	0.02
BE99	0.01	0.00	0.00	0.00	0.00	0.52	0.15	0.00
C152	0.00	0.01	0.00	0.00	0.00	0.00	0.00	0.00
C172	0.00	0.00	0.00	0.00	0.00	0.00	0.01	0.00
C208	0.00	0.00	0.00	0.00	0.00	0.01	0.08	0.00
C25A	0.01	0.01	0.00	0.00	0.00	0.00	0.01	0.00
C25B	0.00	0.02	0.00	0.00	0.00	0.00	0.01	0.00
C525	0.01	0.00	0.00	0.00	0.00	0.00	0.01	0.00

Departures (Average Daily Operations)								
Aircraft Type	06L	06R	07L	07R	24L	24R	25L	25R
A20N	0.00	0.01	0.00	0.00	1.16	0.00	0.03	3.28
A21N	0.00	0.01	0.03	0.00	0.16	0.00	0.04	4.95
A306	0.00	0.00	0.00	0.00	0.00	0.00	0.01	0.49
A319	0.00	0.01	0.02	0.00	0.72	0.01	0.02	3.01
A320	0.00	0.01	0.05	0.00	1.95	0.01	0.11	9.46
A321	0.00	0.08	0.05	0.00	3.61	0.00	0.16	18.88
A332	0.00	0.00	0.01	0.00	0.14	0.00	0.00	0.96
A333	0.00	0.00	0.00	0.00	0.07	0.00	0.00	0.85
A343	0.00	0.00	0.00	0.00	0.01	0.00	0.00	0.02
A359	0.00	0.00	0.04	0.00	1.32	0.00	0.02	2.91
A35K	0.00	0.00	0.00	0.00	0.65	0.00	0.02	0.64
A388	0.00	0.00	0.00	0.00	0.17	0.00	0.37	0.00
B350	0.00	0.00	0.00	0.00	0.03	0.00	0.00	0.67
B38M	0.00	0.00	0.00	0.00	1.32	0.02	0.04	1.66
B39M	0.00	0.01	0.03	0.00	0.76	0.00	0.08	4.24
B737	0.00	0.02	0.02	0.00	5.21	0.09	0.11	4.00
B738	0.00	0.07	0.02	0.00	2.99	0.03	0.16	9.46
B739	0.00	0.02	0.04	0.00	3.64	0.01	0.05	8.12
B744	0.00	0.00	0.01	0.00	0.00	0.00	0.18	4.47
B748	0.00	0.00	0.00	0.00	0.00	0.00	1.49	0.23
B752	0.00	0.01	0.02	0.00	1.04	0.02	0.02	3.01
B753	0.00	0.00	0.00	0.00	0.02	0.00	0.00	1.01
B762	0.00	0.00	0.01	0.00	0.00	0.00	0.07	1.28
B763	0.00	0.01	0.01	0.00	1.33	0.00	0.35	10.00
B764	0.00	0.00	0.00	0.00	0.02	0.00	0.00	0.13
B772	0.00	0.02	0.01	0.00	0.18	0.00	0.01	2.70
B77L	0.00	0.01	0.00	0.00	0.00	0.00	0.08	2.74
B77W	0.00	0.00	0.07	0.00	1.35	0.00	0.12	6.37
B788	0.00	0.00	0.00	0.00	0.15	0.00	0.00	0.12
B789	0.00	0.01	0.03	0.00	0.83	0.00	0.01	3.97
B78X	0.00	0.00	0.00	0.00	0.00	0.00	0.00	0.89
BCS1	0.00	0.01	0.00	0.00	1.35	0.00	0.02	0.07
BCS3	0.00	0.00	0.00	0.00	0.22	0.00	0.00	0.01
BE20	0.00	0.00	0.00	0.00	0.00	0.00	0.00	0.02
BE30	0.00	0.00	0.01	0.00	0.00	0.00	0.00	0.00
BE99	0.00	0.00	0.00	0.00	0.00	0.00	0.02	0.66
C152	0.00	0.00	0.00	0.00	0.00	0.00	0.00	0.01
C172	0.00	0.00	0.00	0.00	0.00	0.00	0.00	0.01
C208	0.00	0.00	0.00	0.00	0.00	0.00	0.00	0.08
C25A	0.00	0.00	0.00	0.00	0.00	0.00	0.00	0.03

LAX Noise Management

Source: LAX ANOMS, based on available FAA radar flight track data.

Note: Aircraft Type for certain military operations may not be available through our data source, therefore will not be included in the report.

**LAX Average Daily Runway Use By Aircraft Type - Night Time (10pm - 7am)
Third Quarter 2022**

Arrivals (Average Daily Operations)								
Aircraft Type	06L	06R	07L	07R	24L	24R	25L	25R
C560	0.00	0.01	0.00	0.00	0.00	0.00	0.00	0.00
C56X	0.00	0.02	0.00	0.00	0.00	0.00	0.04	0.00
C680	0.00	0.00	0.00	0.01	0.00	0.01	0.00	0.00
C68A	0.00	0.00	0.00	0.00	0.00	0.02	0.03	0.00
C700	0.00	0.02	0.00	0.00	0.00	0.00	0.04	0.00
C750	0.00	0.04	0.00	0.00	0.00	0.00	0.04	0.01
CL30	0.01	0.01	0.00	0.00	0.00	0.03	0.12	0.00
CL60	0.00	0.02	0.00	0.00	0.00	0.00	0.04	0.00
CRJ2	0.01	0.00	0.00	0.00	0.03	0.66	0.05	0.00
CRJ7	0.00	0.00	0.00	0.00	0.00	0.09	0.03	0.00
DC10	0.00	0.01	0.00	0.00	0.00	0.00	0.00	0.00
E135	0.00	0.00	0.00	0.00	0.00	0.00	0.03	0.00
E145	0.00	0.00	0.00	0.00	0.00	0.01	0.00	0.00
E170	0.02	0.15	0.00	0.02	0.01	2.12	1.59	0.01
E190	0.00	0.00	0.00	0.00	0.00	0.00	0.03	0.00
E35L	0.00	0.00	0.00	0.00	0.00	0.00	0.02	0.00
E550	0.00	0.00	0.00	0.00	0.00	0.00	0.02	0.00
E55P	0.00	0.01	0.00	0.00	0.00	0.02	0.02	0.00
E75L	0.00	0.00	0.00	0.00	0.01	0.33	0.35	0.02
E75S	0.00	0.00	0.00	0.00	0.00	0.09	0.15	0.01
F2TH	0.00	0.03	0.00	0.00	0.00	0.02	0.03	0.00
F900	0.00	0.00	0.00	0.00	0.00	0.01	0.02	0.00
FA20	0.00	0.00	0.00	0.00	0.00	0.00	0.01	0.00
FA7X	0.00	0.00	0.00	0.00	0.00	0.00	0.02	0.00
FA8X	0.00	0.00	0.00	0.00	0.00	0.00	0.01	0.00
G150	0.00	0.00	0.00	0.00	0.00	0.00	0.00	0.01
G280	0.00	0.00	0.00	0.00	0.00	0.00	0.02	0.00
GASC	0.00	0.01	0.00	0.00	0.00	0.00	0.00	0.00
GALX	0.00	0.00	0.01	0.00	0.00	0.00	0.00	0.00
GL5T	0.00	0.01	0.00	0.00	0.00	0.00	0.03	0.00
GL7T	0.01	0.01	0.00	0.00	0.00	0.00	0.00	0.00
GLEX	0.00	0.01	0.00	0.00	0.00	0.02	0.11	0.00
GLF4	0.01	0.13	0.00	0.00	0.00	0.02	0.13	0.00
GLF5	0.00	0.12	0.02	0.00	0.00	0.04	0.11	0.00
GLF6	0.02	0.02	0.00	0.00	0.00	0.00	0.05	0.00
H25B	0.00	0.02	0.01	0.00	0.00	0.00	0.07	0.00
J328	0.00	0.01	0.00	0.00	0.00	0.00	0.00	0.00
LJ35	0.00	0.00	0.00	0.00	0.00	0.01	0.03	0.00
LJ45	0.00	0.01	0.00	0.00	0.00	0.00	0.02	0.00
LJ60	0.00	0.01	0.00	0.00	0.00	0.00	0.01	0.00
MD11	0.09	0.67	0.02	0.01	0.00	0.03	0.23	0.04

Departures (Average Daily Operations)								
Aircraft Type	06L	06R	07L	07R	24L	24R	25L	25R
C25B	0.00	0.00	0.00	0.00	0.00	0.00	0.00	0.07
C525	0.00	0.00	0.00	0.00	0.00	0.00	0.00	0.03
C560	0.00	0.00	0.00	0.00	0.00	0.00	0.00	0.02
C56X	0.00	0.00	0.00	0.00	0.00	0.00	0.00	0.09
C680	0.00	0.00	0.00	0.00	0.00	0.00	0.00	0.08
C68A	0.00	0.00	0.00	0.00	0.00	0.00	0.01	0.10
C700	0.00	0.00	0.00	0.00	0.00	0.00	0.00	0.04
C750	0.00	0.00	0.00	0.00	0.00	0.00	0.00	0.11
CL30	0.00	0.00	0.00	0.00	0.00	0.00	0.00	0.32
CL60	0.00	0.00	0.00	0.00	0.00	0.00	0.00	0.18
CRJ2	0.00	0.01	0.00	0.00	0.04	0.00	0.00	1.01
CRJ7	0.00	0.00	0.00	0.00	0.02	0.00	0.00	0.83
DC10	0.00	0.00	0.00	0.00	0.00	0.00	0.00	0.05
E135	0.00	0.00	0.00	0.00	0.00	0.00	0.00	0.10
E145	0.00	0.00	0.00	0.00	0.00	0.00	0.00	0.01
E170	0.00	0.01	0.04	0.00	1.02	0.00	0.02	3.61
E190	0.00	0.00	0.00	0.00	0.00	0.00	0.00	0.02
E35L	0.00	0.00	0.00	0.00	0.00	0.00	0.00	0.01
E545	0.00	0.00	0.00	0.00	0.00	0.00	0.00	0.02
E550	0.00	0.00	0.00	0.00	0.00	0.00	0.00	0.04
E55P	0.00	0.00	0.00	0.00	0.00	0.00	0.00	0.09
E75L	0.00	0.01	0.00	0.00	0.34	0.00	0.00	0.93
E75S	0.00	0.00	0.00	0.00	0.22	0.00	0.00	0.01
F2TH	0.00	0.00	0.00	0.00	0.00	0.00	0.00	0.05
F900	0.00	0.00	0.00	0.00	0.00	0.00	0.00	0.03
FA7X	0.00	0.00	0.00	0.00	0.00	0.00	0.00	0.04
FA8X	0.00	0.00	0.00	0.00	0.00	0.00	0.00	0.02
G150	0.00	0.00	0.00	0.00	0.00	0.00	0.00	0.01
G280	0.00	0.00	0.00	0.00	0.00	0.00	0.00	0.02
GASC	0.00	0.00	0.00	0.00	0.00	0.00	0.00	0.02
GALX	0.00	0.00	0.00	0.00	0.00	0.00	0.00	0.01
GL5T	0.00	0.00	0.00	0.00	0.00	0.00	0.00	0.02
GL7T	0.00	0.00	0.00	0.00	0.00	0.00	0.00	0.08
GLEX	0.00	0.00	0.00	0.00	0.00	0.00	0.00	0.21
GLF4	0.00	0.00	0.01	0.00	0.00	0.00	0.00	0.33
GLF5	0.00	0.00	0.00	0.00	0.00	0.00	0.00	0.29
GLF6	0.00	0.00	0.00	0.00	0.00	0.00	0.01	0.14
H25B	0.00	0.00	0.00	0.00	0.01	0.00	0.00	0.15
J328	0.00	0.00	0.00	0.00	0.00	0.00	0.00	0.01
LJ35	0.00	0.00	0.00	0.00	0.00	0.00	0.00	0.01
LJ45	0.00	0.00	0.01	0.00	0.00	0.00	0.00	0.03

LAX Noise Management

Source: LAX ANOMS, based on available FAA radar flight track data.

Note: Aircraft Type for certain military operations may not be available through our data source, therefore will not be included in the report.

**LAX Average Daily Runway Use By Aircraft Type - Night Time (10pm - 7am)
Third Quarter 2022**

Arrivals (Average Daily Operations)								
Aircraft Type	06L	06R	07L	07R	24L	24R	25L	25R
PC12	0.02	0.05	0.02	0.00	0.00	0.25	0.18	0.00
FA50	0.00	0.01	0.00	0.00	0.00	0.00	0.02	0.00
PRM1	0.00	0.00	0.00	0.00	0.00	0.00	0.01	0.00
DA40	0.00	0.00	0.00	0.00	0.00	0.01	0.00	0.00
BE33	0.00	0.00	0.00	0.00	0.00	0.00	0.01	0.00
B732	0.00	0.01	0.00	0.00	0.00	0.00	0.00	0.00

Departures (Average Daily Operations)								
Aircraft Type	06L	06R	07L	07R	24L	24R	25L	25R
LJ60	0.00	0.00	0.00	0.00	0.00	0.00	0.00	0.03
MD11	0.00	0.00	0.01	0.00	0.00	0.00	0.03	1.25
PC12	0.00	0.00	0.00	0.00	0.04	0.00	0.01	0.65
B734	0.00	0.00	0.00	0.00	0.00	0.00	0.00	0.01
FA50	0.00	0.00	0.00	0.00	0.00	0.00	0.00	0.02
PRM1	0.00	0.00	0.00	0.00	0.00	0.00	0.00	0.02
A346	0.00	0.00	0.00	0.00	0.01	0.00	0.00	0.00
DA40	0.00	0.00	0.00	0.00	0.01	0.00	0.00	0.00
C340	0.00	0.00	0.00	0.00	0.00	0.00	0.00	0.01
JS32	0.00	0.00	0.00	0.00	0.00	0.00	0.00	0.01
PA46	0.00	0.00	0.00	0.00	0.00	0.00	0.00	0.01
BE33	0.00	0.00	0.00	0.00	0.00	0.00	0.00	0.01
B732	0.00	0.00	0.00	0.00	0.00	0.00	0.00	0.01

LAX Average Daily Runway Use By Aircraft Group - 24 Hours Third Quarter 2022

Arrivals (Average Daily Operations)								
Aircraft Group	06L	06R	07L	07R	24L	24R	25L	25R
Small Jet	0.70	0.74	0.04	0.55	1.00	87.82	62.49	1.24
Small Narrow-Body Jet	2.46	10.05	0.02	1.28	2.32	153.16	153.08	2.75
Large Narrow-Body Jet	1.22	7.08	0.12	0.80	0.57	41.53	85.13	1.66
Small Wide-Body Jet	0.40	4.88	0.43	0.32	0.11	6.54	15.20	0.59
Large Wide-Body Jet	1.32	8.67	0.27	0.55	0.61	50.87	61.57	0.89
Non-Jet	0.08	0.10	0.02	0.03	0.11	3.52	4.24	0.28
Military*	0.00	0.00	0.00	0.00	0.00	0.00	0.00	0.00

Departures (Average Daily Operations)								
Aircraft Group	06L	06R	07L	07R	24L	24R	25L	25R
Small Jet	0.00	0.65	0.46	0.00	51.95	0.34	11.03	90.00
Small Narrow-Body Jet	0.00	0.98	1.11	0.00	155.84	1.01	2.36	164.11
Large Narrow-Body Jet	0.00	0.43	0.46	0.00	37.20	0.28	1.41	98.13
Small Wide-Body Jet	0.00	0.05	0.10	0.00	8.68	0.07	3.45	16.02
Large Wide-Body Jet	0.00	0.32	0.71	0.02	44.96	0.14	13.33	65.55
Non-Jet	0.00	0.01	0.03	0.00	0.79	0.02	0.70	6.73
Military*	0.00	0.00	0.00	0.00	0.02	0.00	0.00	0.00

**LAX Average Daily Runway Use By Aircraft Group - Night Time (10pm - 7am)
Third Quarter 2022**

Arrivals (Average Daily Operations)								
Aircraft Group	06L	06R	07L	07R	24L	24R	25L	25R
Small Jet	0.11	0.74	0.04	0.03	0.05	3.51	3.35	0.07
Small Narrow-Body Jet	1.63	10.04	0.01	0.24	0.68	23.15	25.82	0.22
Large Narrow-Body Jet	1.00	7.07	0.12	0.13	0.29	7.90	13.83	0.18
Small Wide-Body Jet	0.40	4.88	0.43	0.18	0.09	0.89	4.39	0.34
Large Wide-Body Jet	0.88	8.65	0.27	0.20	0.16	3.85	6.33	0.32
Non-Jet	0.04	0.09	0.02	0.00	0.01	0.93	0.50	0.01
Military*	0.00	0.00	0.00	0.00	0.00	0.00	0.00	0.00

Departures (Average Daily Operations)								
Aircraft Group	06L	06R	07L	07R	24L	24R	25L	25R
Small Jet	0.00	0.03	0.07	0.00	1.65	0.00	0.04	9.29
Small Narrow-Body Jet	0.00	0.16	0.20	0.00	19.30	0.17	0.63	43.34
Large Narrow-Body Jet	0.00	0.10	0.11	0.00	4.84	0.02	0.23	27.85
Small Wide-Body Jet	0.00	0.01	0.02	0.00	1.35	0.00	0.42	11.90
Large Wide-Body Jet	0.00	0.04	0.18	0.00	4.88	0.00	2.34	28.16
Non-Jet	0.00	0.00	0.01	0.00	0.09	0.00	0.03	2.15
Military*	0.00	0.00	0.00	0.00	0.00	0.00	0.00	0.00

Summary of Actions Taken by LAWA to Comply with Conditions to the Current Noise Variance for Los Angeles International Airport

Third Quarter 2022

The Los Angeles World Airports (LAWA) continuously works to operate an airport that maintains the highest possible environmental quality of life for surrounding communities. To that end, LAWA continues to take the following actions:

- LAWA continues to implement its Aircraft Noise Mitigation Program (ANMP), designed to fund the mitigation of all incompatible land uses within the noise impact boundary as defined in the State Noise Standards. LAWA updates the ANMP report periodically to ensure that it reasonably represents the mitigation and funding programs that are in place.
- With each second quarter Quarterly Report, LAWA submits an annual update of the ANMP. This update includes the number of dwellings acoustically insulated, the cost of the program, the anticipated funding availability, and the anticipated completion date of the project.
- LAWA continues to monitor and enforce, as appropriate, all of its informal noise abatement procedures in place at LAX, including but not limited to the early turn program, preferential runway use procedures and over ocean operations procedures, as well as the formal maintenance run-up restrictions.
- LAWA continues to work with the Federal Aviation Administration and pilots to improve compliance with its “no turns before the shoreline” policy.
- LAWA will update the April 11, 2014 Report on Implementation of the Preferential Runway Use Policy at LAX within the specified period to reevaluate conditions related to compliance, implementation and possible improvements.
- LAWA continues to provide the information to the County of Los Angeles needed to prepare Quarterly Reports of Noise Monitoring. Included with the noise monitoring information forwarded each quarter is this brief report regarding the implementation of each of the conditions to the Variance.

- LAWA has not yet submitted “any proposed new or modified noise monitoring plan or system” to Caltrans during this Variance period and, therefore, has not needed to provide a copy to the County. The existing airport noise and operations monitoring system was certified by Caltrans in February 2010 and the County was provided with all submitted documentation at that time. The County continues to review and audit the data LAWA submits in each Quarterly Report.
- LAWA continues to include tabular data and graphical illustrations with each Quarterly Report describing and comparing the level and type of usage for each runway at LAX during the quarter. In addition, LAWA is including tabular data describing the daily average number of arrivals and departures by aircraft type and model on each runway during all hours and during nighttime hours from 10 pm to 7 am. LAWA is also now providing the runway usage data to the FAA for their use in monitoring air traffic runway usage.
- LAWA continues to monitor and enforce its maintenance run-up curfew (2300-0600). When applicable, LAWA will include with each Quarterly Report, information regarding monitoring and enforcement activities undertaken during the quarter. There were no enforcement actions reported during the third quarter 2022.
- LAWA continues to provide the LAX Noise Comment Phone Line with an option for callers to have a live answer as available, and continues to retrieve any complaint messages and provide appropriate responses in a timely manner.